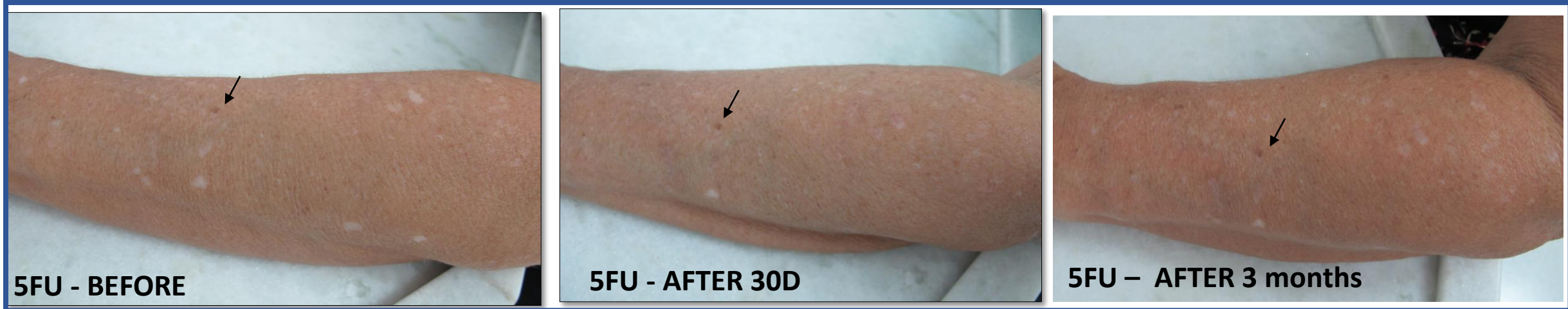


**PATIENT**

**1**

Arrows indicate topographical landmarks

*#1 On day 30, the limb treated exclusively with 5FU MMP showed better results. On day 30, the remaining IGH spots treated with saline MMP were treated with 5FU MMP. After 3 months, there are recurrent IGH lesions in both limbs. However, results on the limb treated with 5FU MMP seem better.*



PATIENT 2

#2 The two procedures produced good results which were remained after 4 months.



Arrows indicate topographical landmarks

**PATIENT 3**

*#3 On day 30, results are better in the limb treated with 5FU MMP . Residual IGH lesions in the limb treated with saline MMP were treated with 5FU MMP. Four Years later, both limbs show recurrent IGH lesions.*

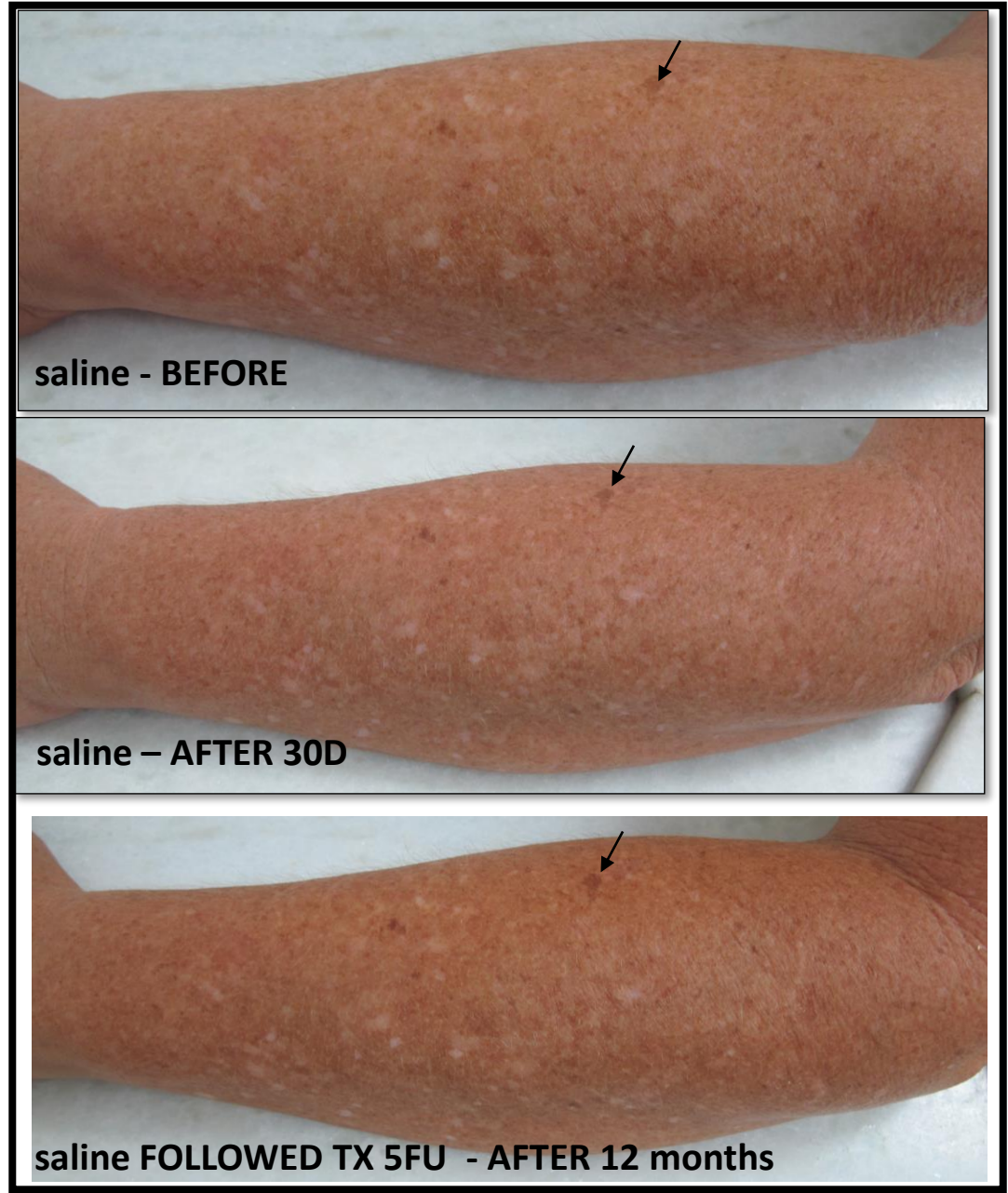


PATIENT 4 #4 The two procedures produced good results which were remained after 4 months

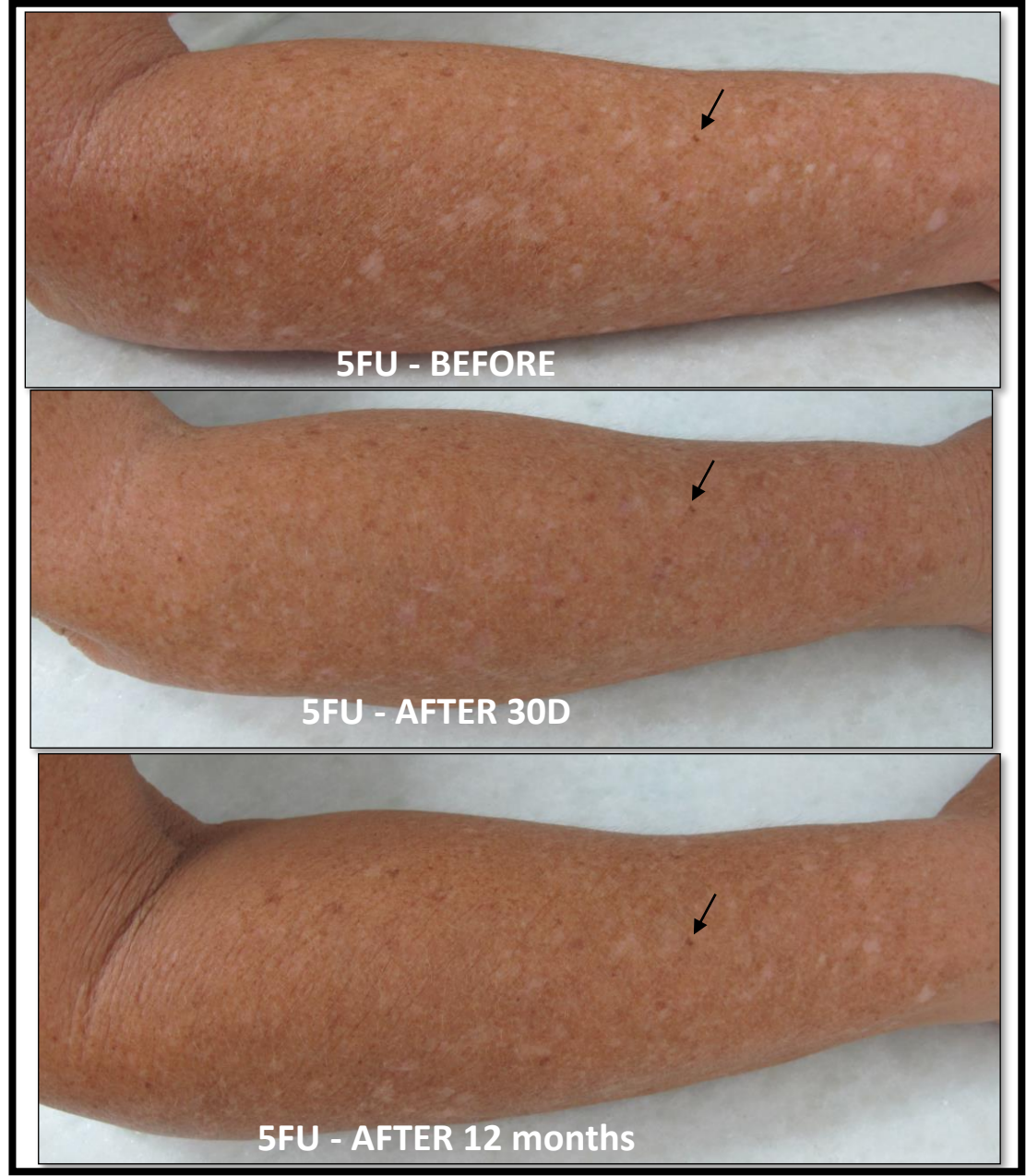


Arrows indicate topographical landmarks

Arrows indicate topographical landmarks



*On day 30, results on the limb treated with 5FU MMP are better. Residual IGH lesions on the saline treated limb were treated with 5FU MMP. After 12 months, the aspect of both limbs is much better than before treatment.*



**PATIENT 6**

*#6 On day 30, results in the 5FU MMP treated limb are better than in the saline MMP treated limb. On day 30, residual IGH lesions in the saline MMP treated limb were treated with 5FU MMP. After 9 months, results are better in the limb treated exclusively with 5FU MMP.*



saline - BEFORE



saline - AFTER 30D



saline FOLLOWED by TX  
5FU - AFTER 9 months



5FU - BEFORE



5FU - AFTER 30D



5FU - AFTER 9 months

Arrows indicate topographical landmarks

PATIENT

7

#7 On day 30, results in the 5FU MMP treated limb are better than in the saline MMP treated limb. On day 30, residual IGH lesions in the saline MMP treated limb were treated with 5FU MMP. After 220 days, there are recurrent IGH lesions in both limbs. However, results on the limb treated exclusively with 5FU MMP seem better.



Circles indicate topographical landmarks

PATIENT 8

▶ #8 On day 30, results in the 5FU MMP treated limb are better than in the saline MMP treated limb. On day 30, residual IGH lesions in the saline MMP treated limb were treated with 5FU MMP. After 4 years, there are more recurrent IGH lesions in the limb treated with MMP saline

▶ #8 Before and after 30 days photos were published on JAAD - Activation of melanocytes in idiopathic guttate hypomelanosis after 5-fluorouracil infusion using a tattoo machine: Preliminary analysis of a randomized, split-body, single blinded, placebo controlled clinical trial.



saline - BEFORE

saline - AFTER 30D

saline FOLLOWED TX  
5FU - AFTER 4 months

5FU - BEFORE

5FU - AFTER 30D

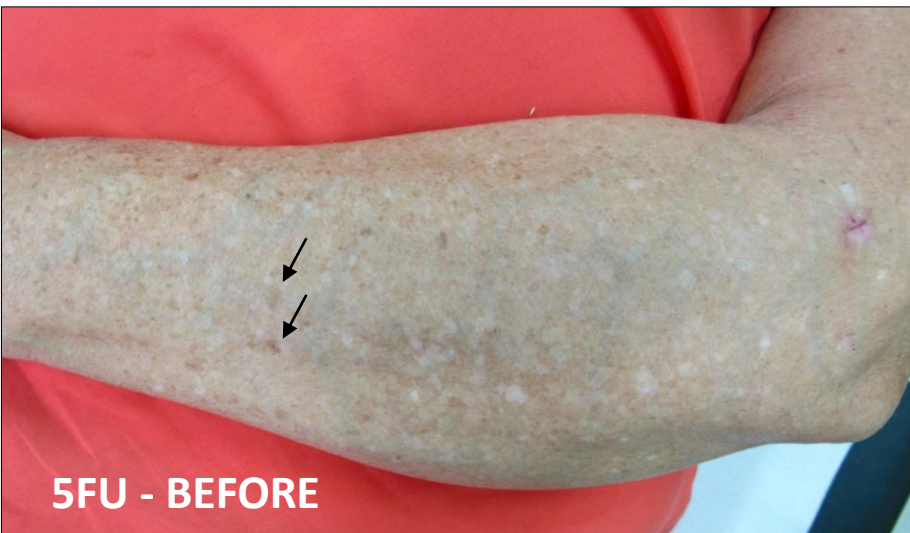
5FU - AFTER 4 years

Circles indicate topographical landmarks



**9 PATIENT** #9 Limbs treated with 5FU MMP had better results at 30 days and 17 months than limbs treated with saline MMP. On day 30, residual IGH lesions in the saline MMP treated limb were treated with 5FU MMP.

Arrows indicate topographical landmarks



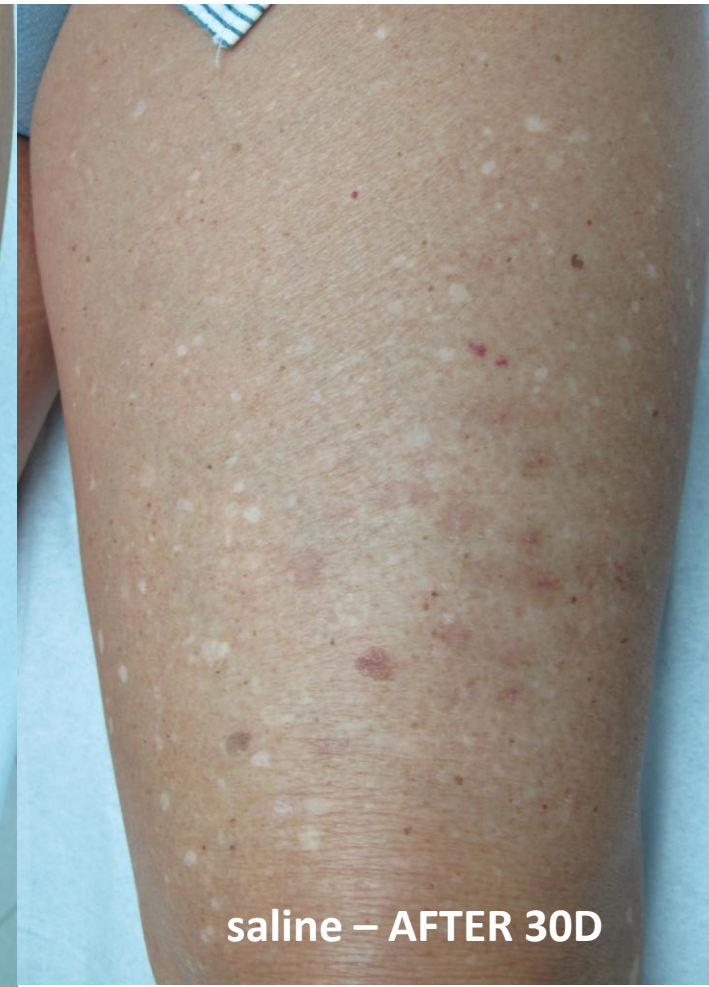
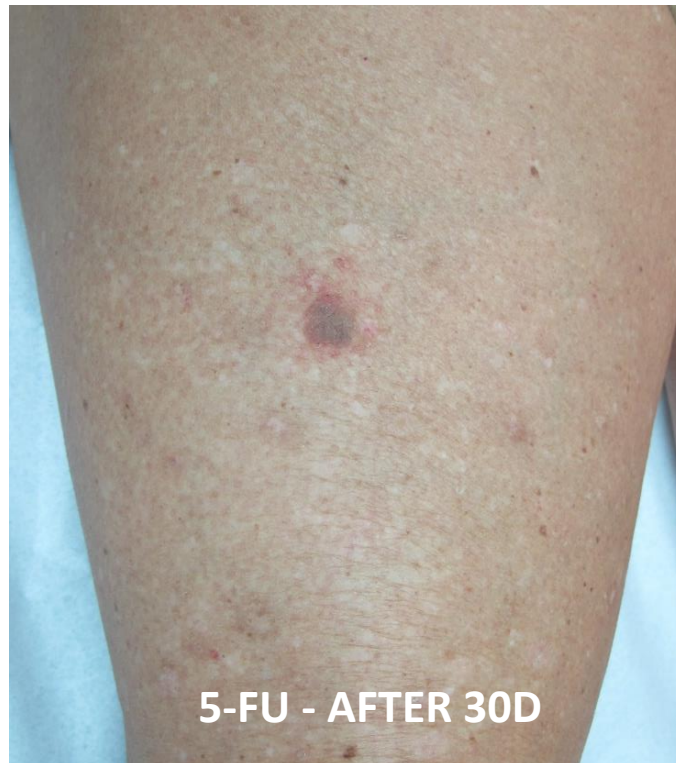
#10 At 30 days, results are better in the 5FU MMP treated limb. On day 30, residual IGH lesions in the saline MMP treated limb were treated with 5FU MMP. After 210 days, there are recurrent IGH lesions in both limbs but results are better in the limb treated with 5FU MMP.

○ Circles indicate topographical landmarks



*#11 This male patient did not return at other follow-up visits*

*At 30 days, there hyperpigmentation was note in the saline MMP treated limb.*



PATIENT

12

*#12. On day 30, results in the 5FU MMP treated limb are better than in the saline MMP treated limb. On day 30, residual IGH lesions in the saline MMP treated limb were treated with 5FU MMP. After 11 months, both limbs had good results (compared to the pictures before treatment).*



5FU - BEFORE



5FU - AFTER 30D



5FU - AFTER 11 months



saline - BEFORE



saline - AFTER 30D

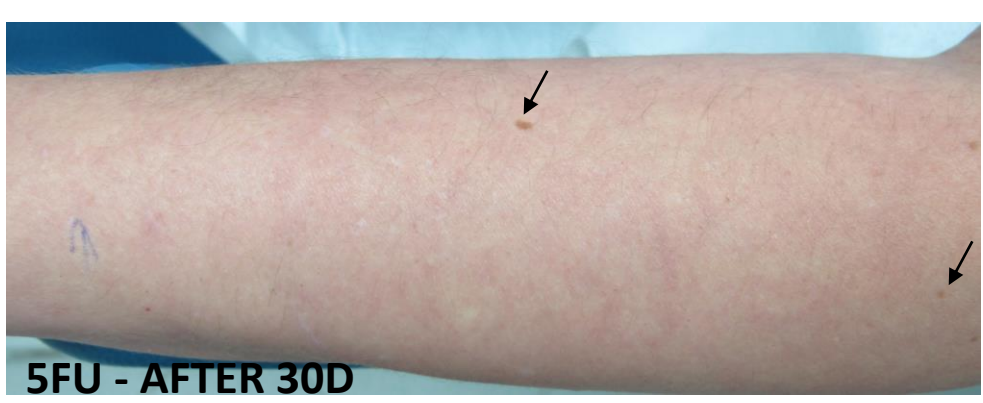
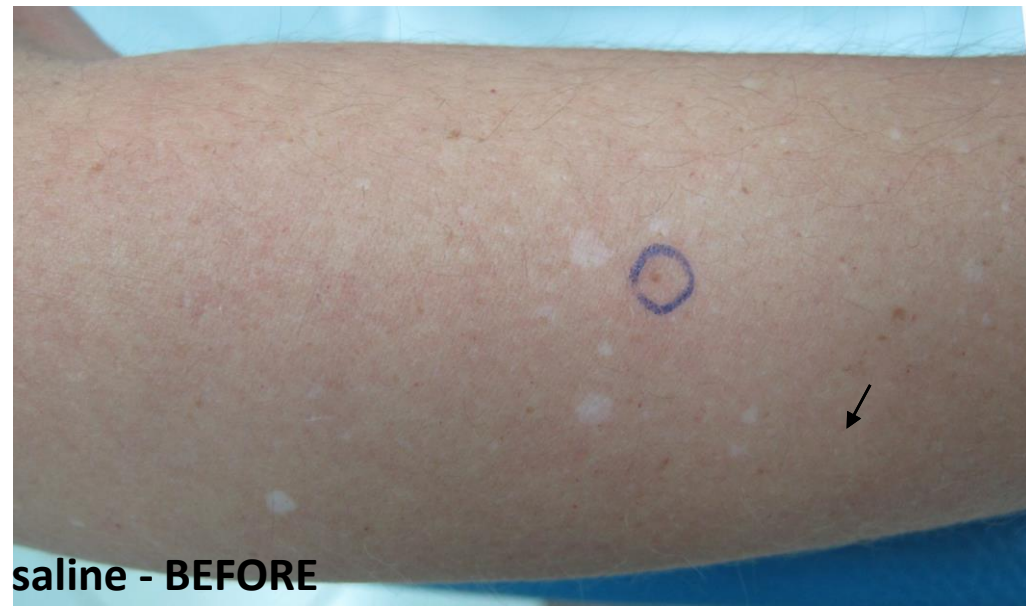


saline FOLLOWED by TX 5FU - AFTER 11 months

PATIENT

13

#13 This patient did not return for additional follow-up visits



↙ Arrows indicate topographical landmarks

PATIENT

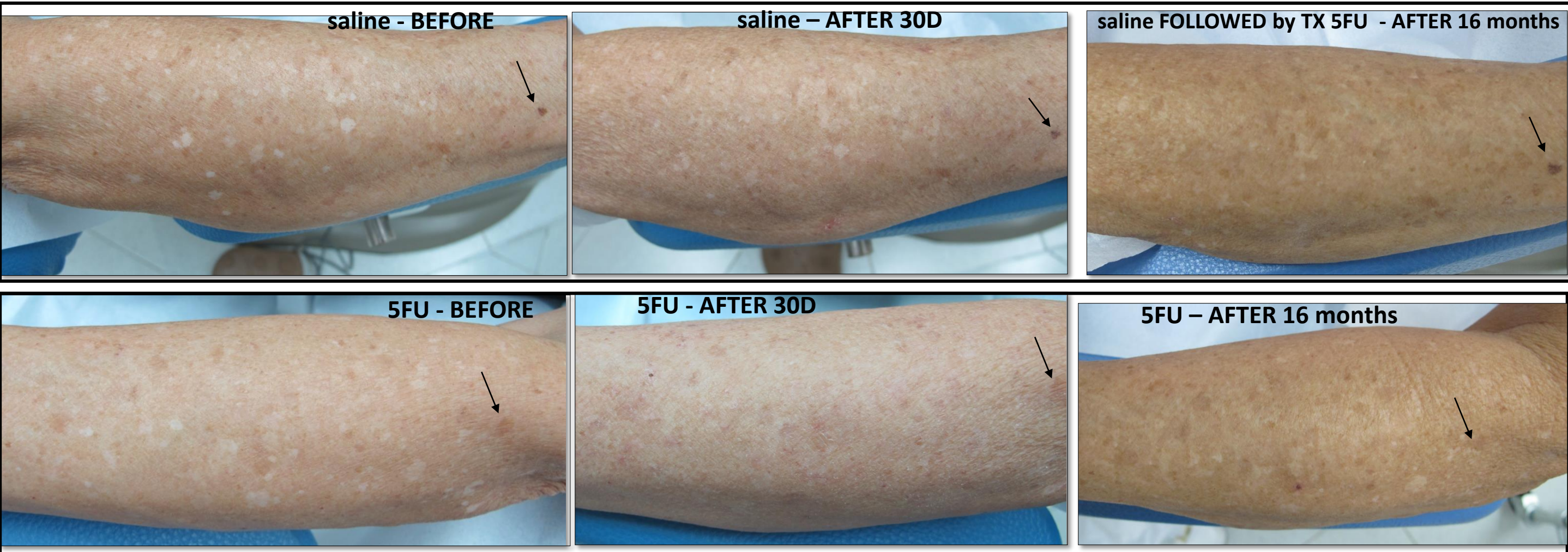
14

*#14 After 30 days and 16 months, results were good in both limbs. In the limb treated with saline, transient hyperpigmentation (red circles) occurred*



○ Red circles - hyperpigmentation

○ Blue circles - topographical landmarks

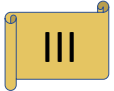


*#15 After 30 days, results are better in the limb treated exclusively with 5FU MMP. On day 30, residual IGH lesions in the saline MMP treated limb were treated with 5FU MMP. After 16 months both limbs (treated exclusively with 5FU MMP and treated with saline and 5FU MMP) had good results (compared to the pictures before treatment) but there were recurrent IGH lesions in both limbs.*

**PATIENT**

**16**

*#16 On day 30, results were better in the limb treated exclusively with 5FU MMP. After 4 months, there were recurrent IGH lesions in the 5FU MMP treated limb. There was little improvement in the limb treated with saline MMP.*



Fitzpatrick





PATIENT

17

#17 On day 30, results were better in the limb treated exclusively with 5FU MMP. On day 30, residual IGH lesions in the saline MMP treated limb were treated with 5FU MMP. After 4 months, both limbs had good results but they were better in the 5 FU MMP treated limb.



5FU - BEFORE



5FU - AFTER 30D



5FU - AFTER 4 months  
Excoriations unrelated with the procedure



saline - BEFORE



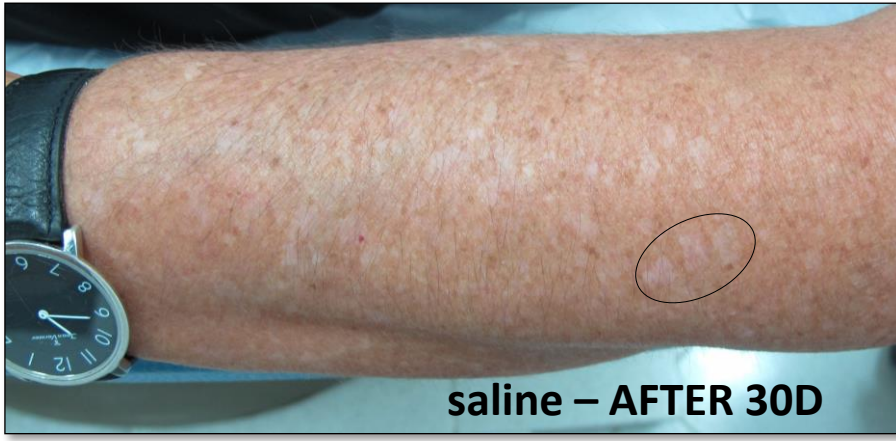
saline - AFTER 30D



SALINE FOLLOWED by TX 5FU - AFTER 4 months

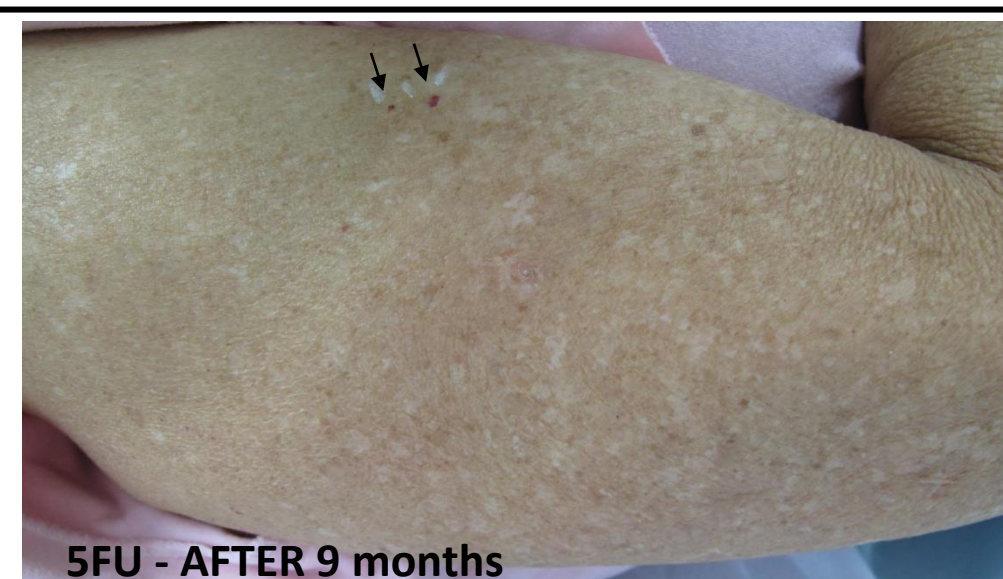
○ Circles indicate topographical landmarks

#18 after 30 days, results were better in the 5FU MMP treated limb. On day 30, residual IGH lesions in the saline MMP treated limb were treated with 5FU MMP. After 4 years there are recurrent IGH lesions in both limbs.



○ Circles indicate topographical landmarks

*#19 On day 30, results were better in the limb treated exclusively with MMP 5FU. On day 30, residual IGH lesions in the saline MMP treated limb were treated with 5FU MMP. After 9 months, results were good in both limbs.*



○ Circle - recent biopsy wound

↘ Arrows indicate topographical landmarks

PATIENT

20

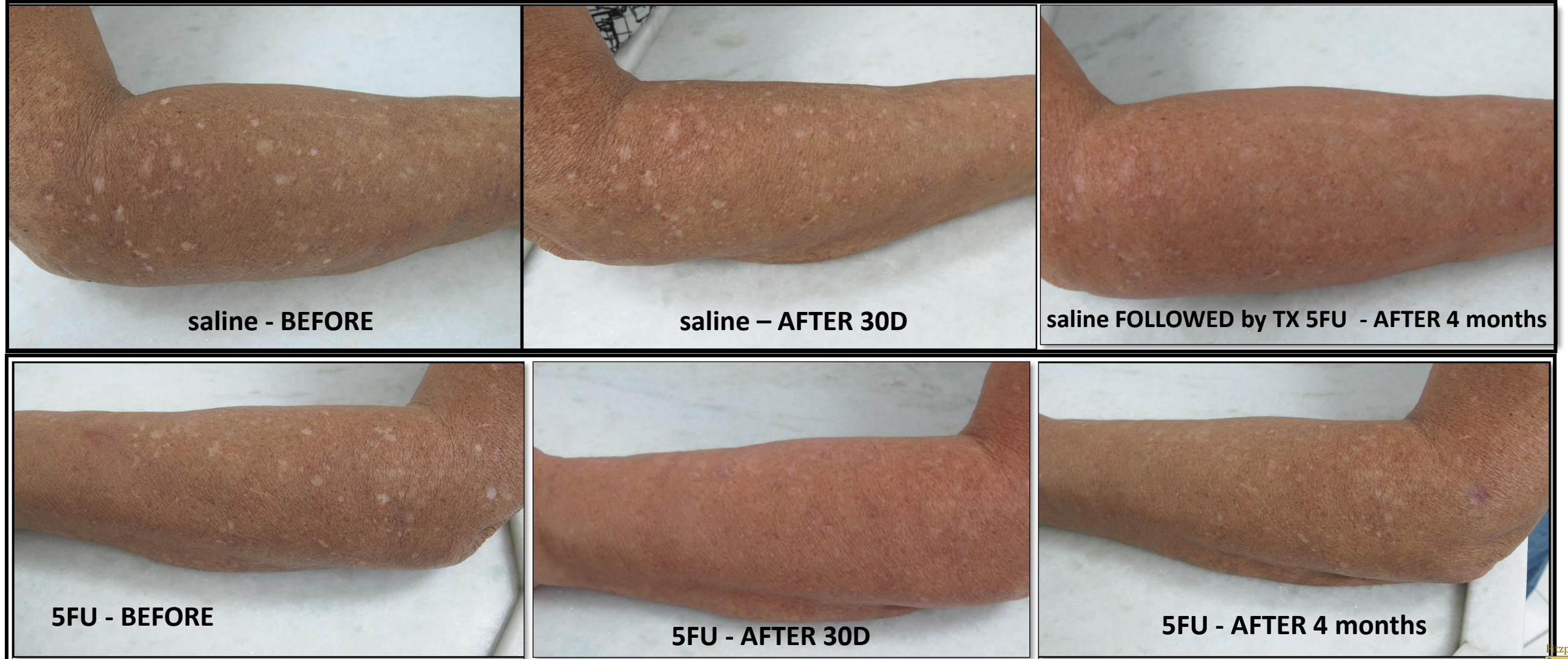
*#20 On day 30, results were better in the limb treated exclusively with 5FU MMP. On day 30, residual IGH lesions in the saline MMP treated limb were treated with 5FU MMP. After 6 months, results were good in both limbs (compared to the pictures before treatment).*



PATIENT

21

*#21 On day 30, results were better in the limb treated exclusively with 5FU MMP. On day 30, residual IGH lesions in the saline MMP treated limb were treated with 5FU MMP. After 4 months, results were good in both limbs but better in the limb initially treated with saline.*



PATIENT

22

*# 22 On day 30, results were better in the limb treated exclusively with 5FU MMP. On day 30, residual IGH lesions in the saline MMP treated limb were treated with 5FU MMP. After 4 months, results were much better in the limb treated exclusively with 5FU MMP.*



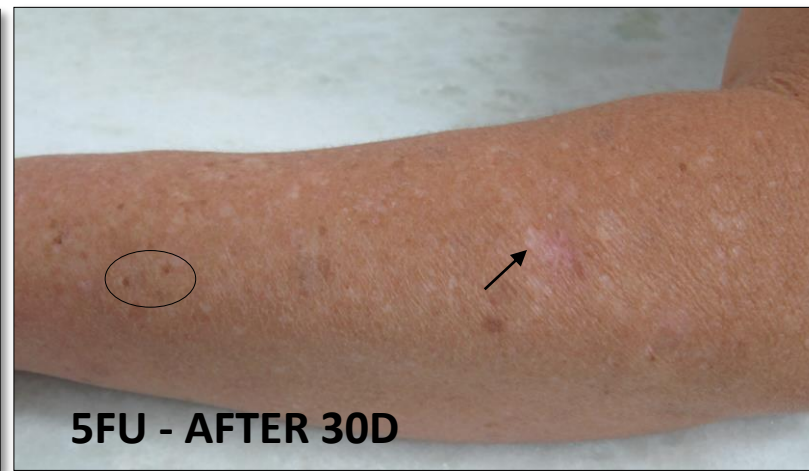
○ Circles indicate topographical landmarks  
Arrow: biopsy site



PATIENT

23

*#23 On day 30, results were better in the limb treated exclusively with 5FU MMP. On day 30, residual IGH lesions in the saline MMP treated limb were treated with 5FU MMP. After 4 months, rboth limbs had good results (compared with the pictures before treatment).*

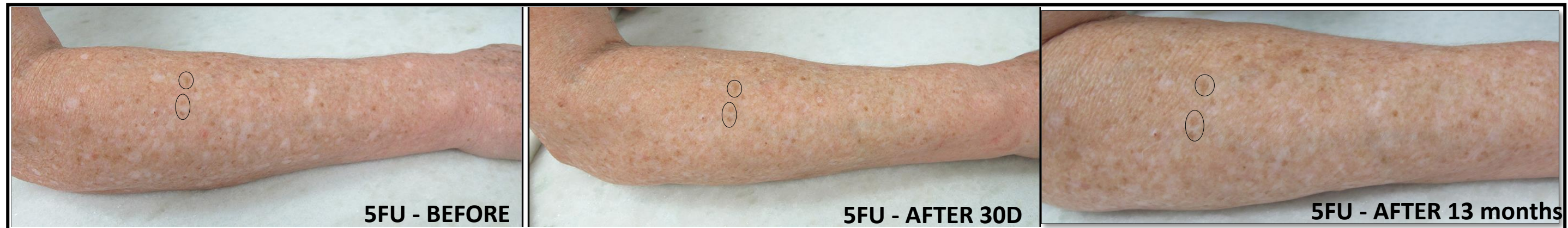


○ Circles indicate topographical landmarks  
Arrows : biopsy site

PATIENT

24

*#24. On day 30, results were better in the limb treated exclusively with 5FU MMP. On day 30, residual IGH lesions in the saline MMP treated limb were treated with 5FU MMP. After 13 months, results were better in the limb treated exclusively with 5FU MMP*



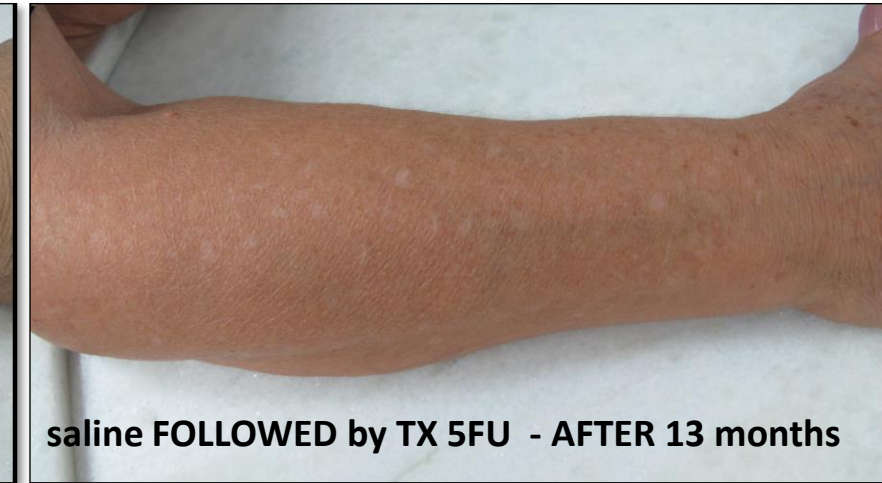
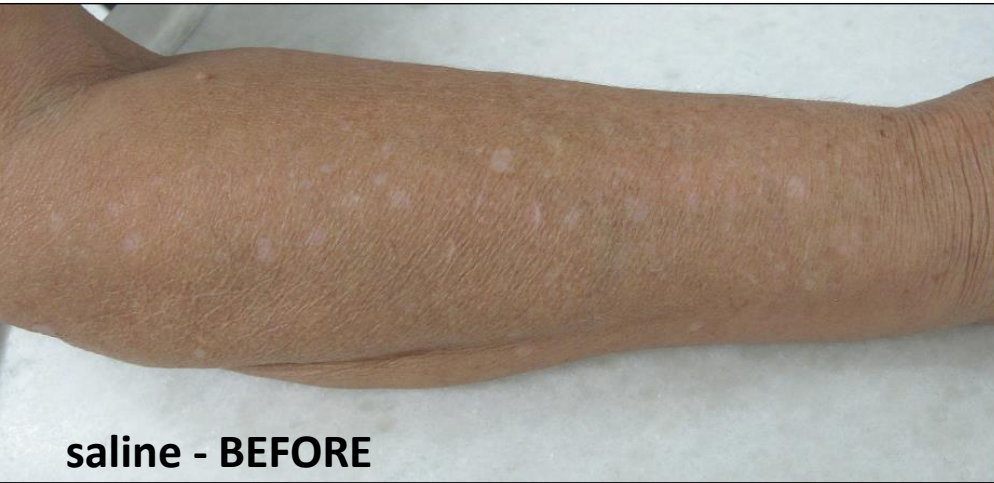
- Circles indicate topographical landmarks
- ↗ Arrows indicate topographical landmarks



PATIENT

25

*#25 On day 30, results were better in the limb treated exclusively with 5FU MMP. On day 30, residual IGH lesions in the saline MMP treated limb were treated with 5FU MMP. After 13 months, there are recurrent IGH lesions in the limb previously treated with saline.*



PATIENT

26

*#26 On day 30, results are better in the limb treated exclusively with 5FU MMP. On day 30, residual IGH lesions in the saline MMP treated limb were treated with 5FU MMP. After 4 months, there are recurrent IGH lesions in both limbs. However, results are better in the limb previously treated with 5FU (compared to the pictures before treatment).*



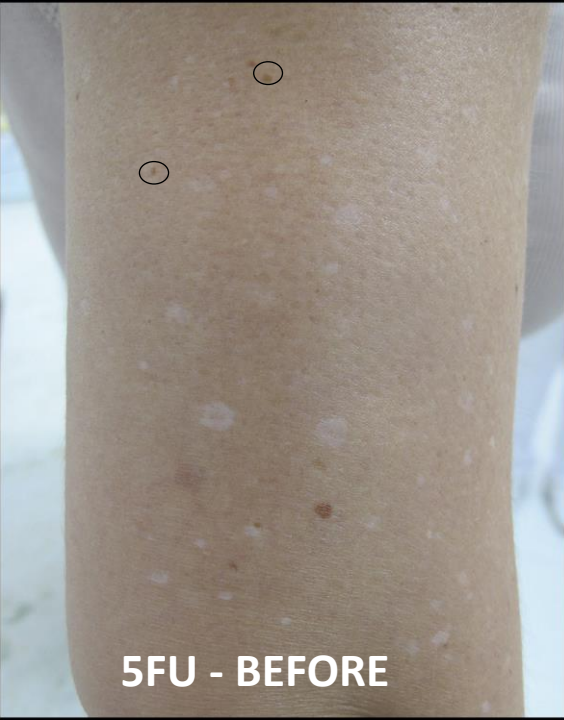
○ Circles indicate topographical landmarks

↗ Arrows : 2 Basal Cell Carcinoma- REMOVED

Red arrows : scars due to Basal Cell carcinoma removal

PATIENT

27



5FU - BEFORE



5FU - AFTER 30D



5FU - AFTER 4 months

○ Circles indicate topographical landmarks

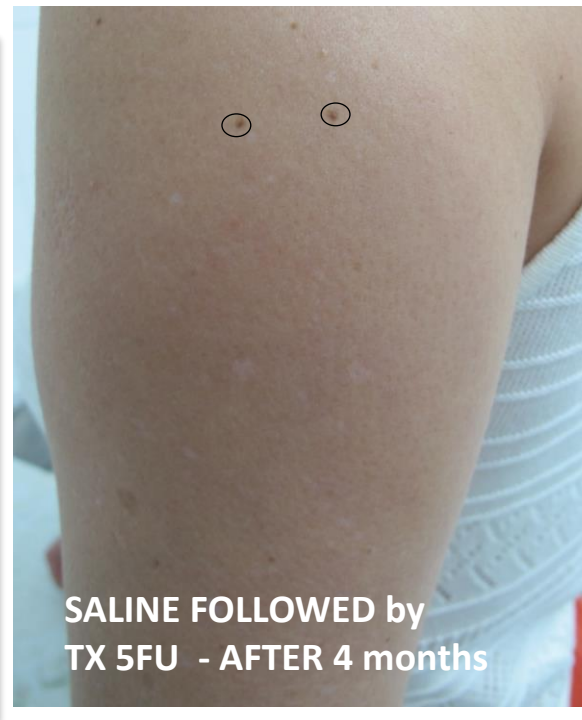
*#27 On day 30, results were a little better in the limb treated exclusively with 5FU MMP 5FU. On day 30, residual IGH lesions in the saline MMP treated limb were treated with 5FU MMP. After 5 months, results were good in both limbs.*



saline - BEFORE



saline - AFTER 30D

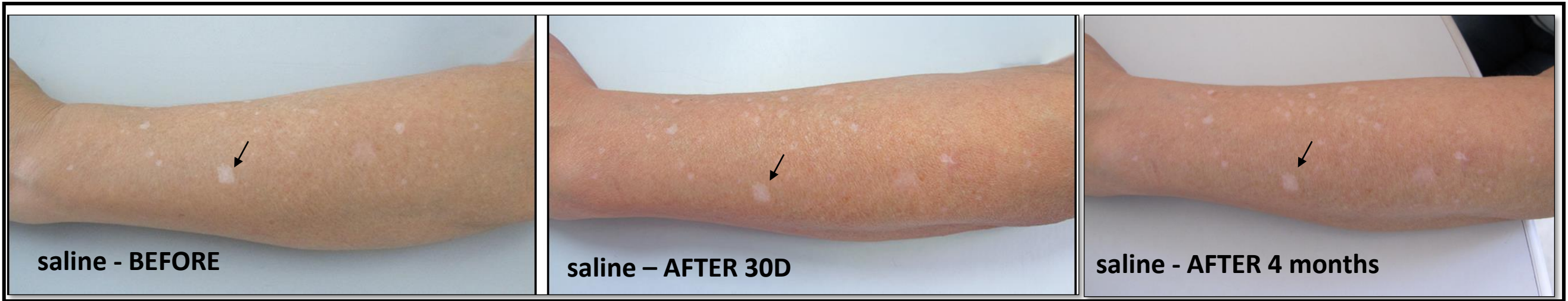


SALINE FOLLOWED by TX 5FU - AFTER 4 months

PATIENT

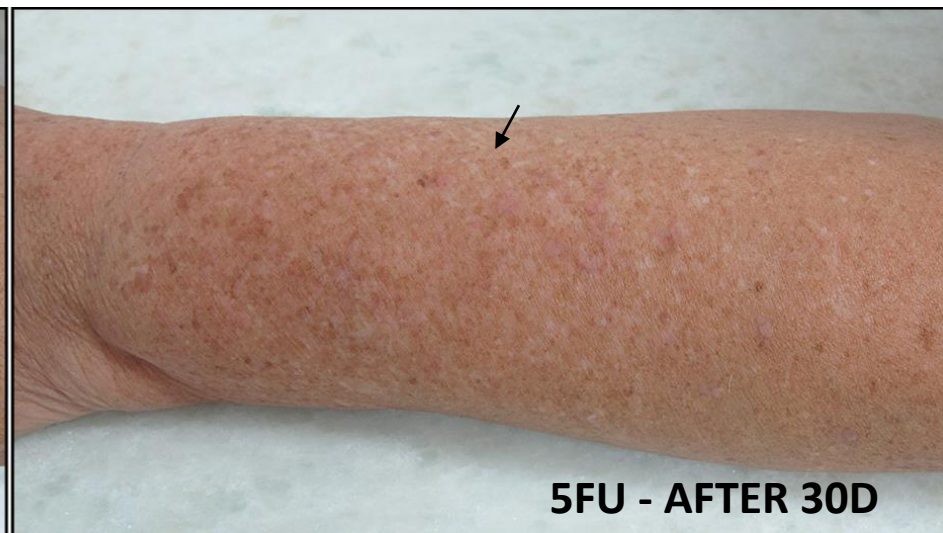
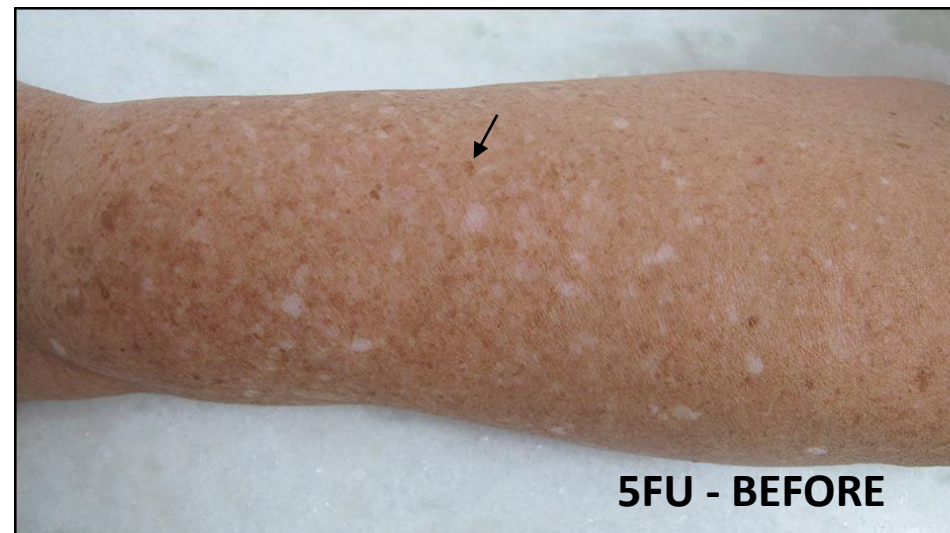
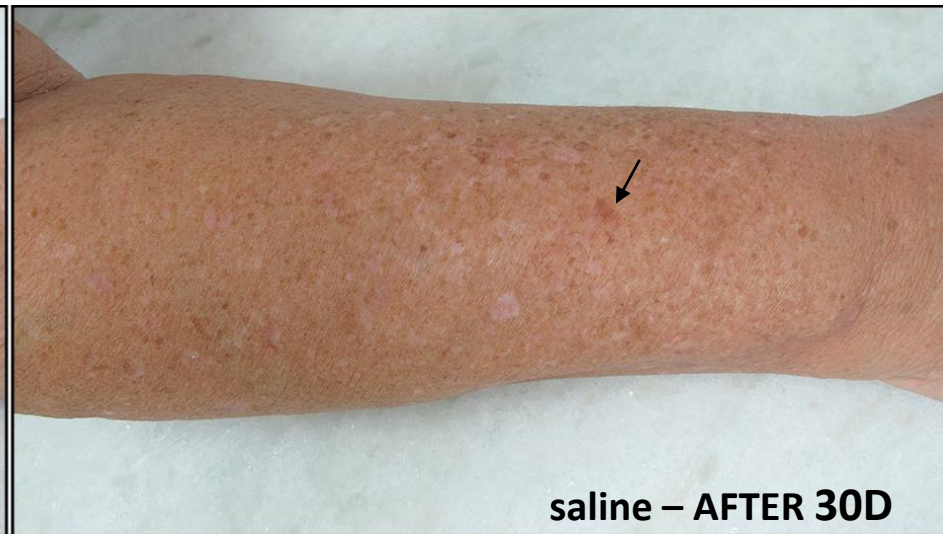
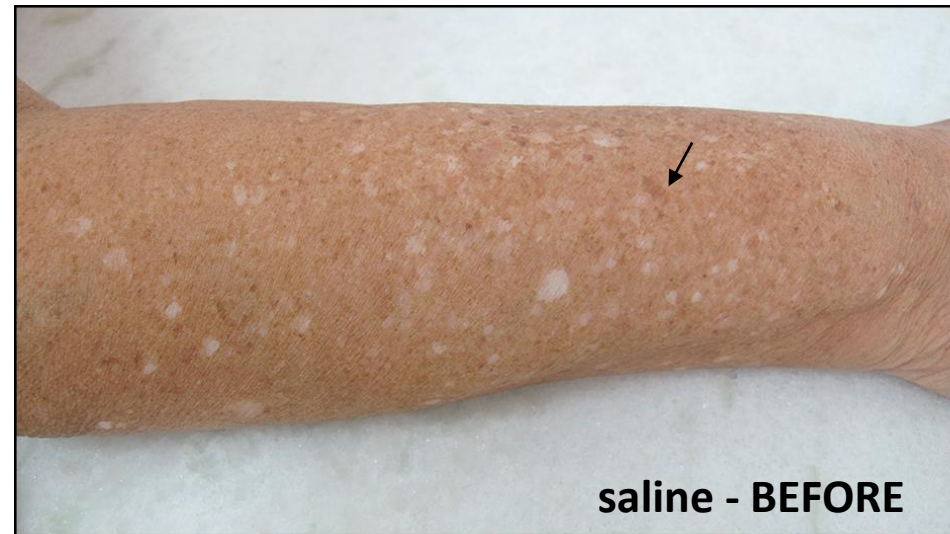
28

*#28 On day 30 and after 4 months, results were better in the limb treated exclusively with 5FU MMP. On day 30, residual IGH lesions in the saline MMP treated limb were NOT treated with 5FU MMP. After 4 months, there are recurrent IGH lesions in the limb treated exclusively with saline MMP.*



↙ Arrows indicate topographical landmarks

*#29 On day 30, results were better in the limb treated exclusively with MMP 5FU. On day 30, residual IGH lesions in the saline MMP treated limb were treated with 5FU MMP. After 10 months, there are recurrent IGH lesions on both limbs but there are fewer lesions than before the treatment.*



↙ Arrows indicate topographical landmarks