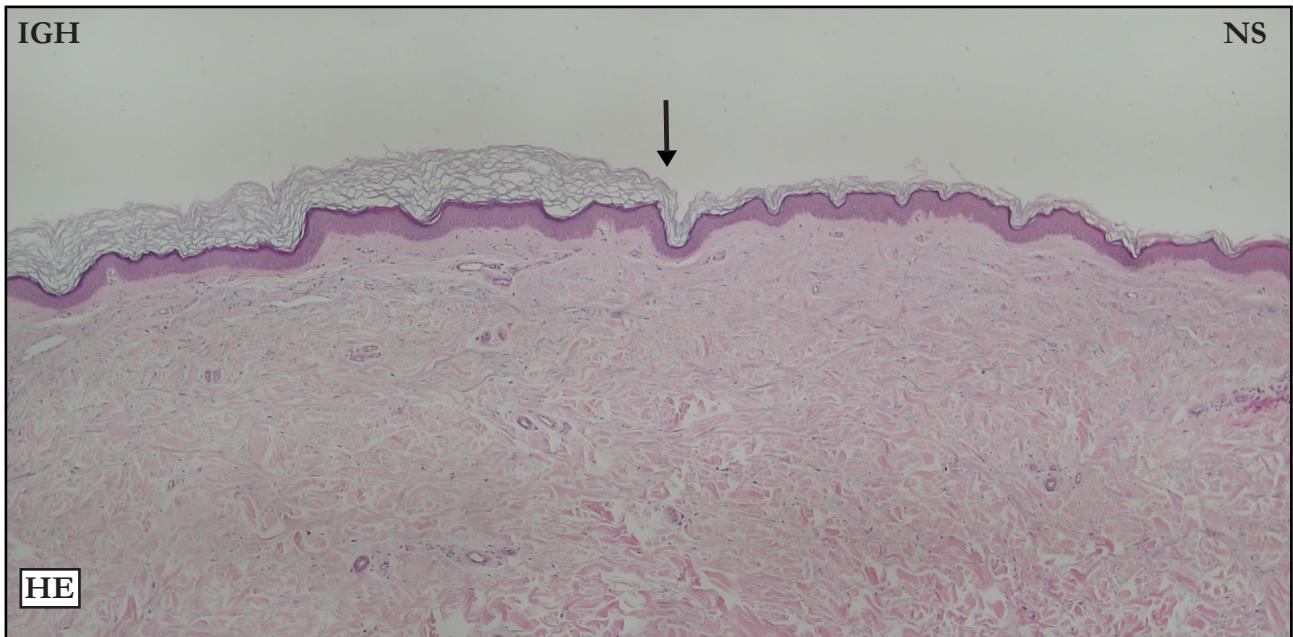


CASE 11

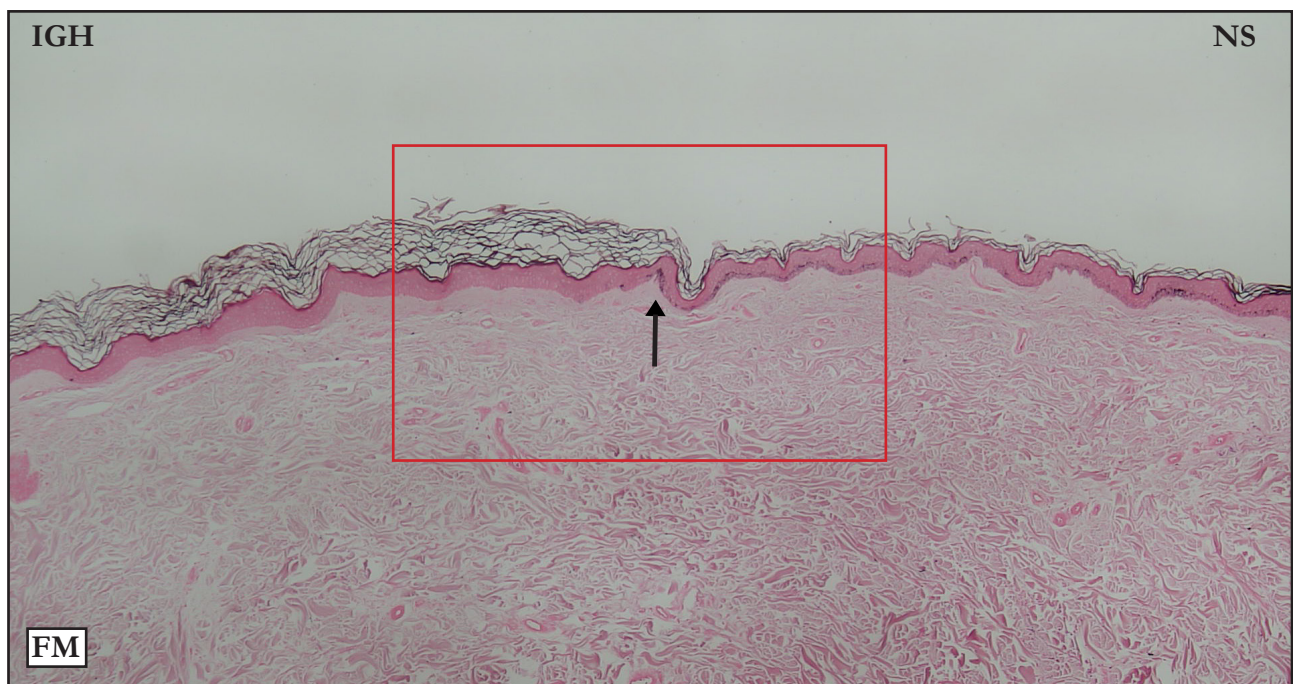
HEMATOXYLIN-EOSIN (HE):

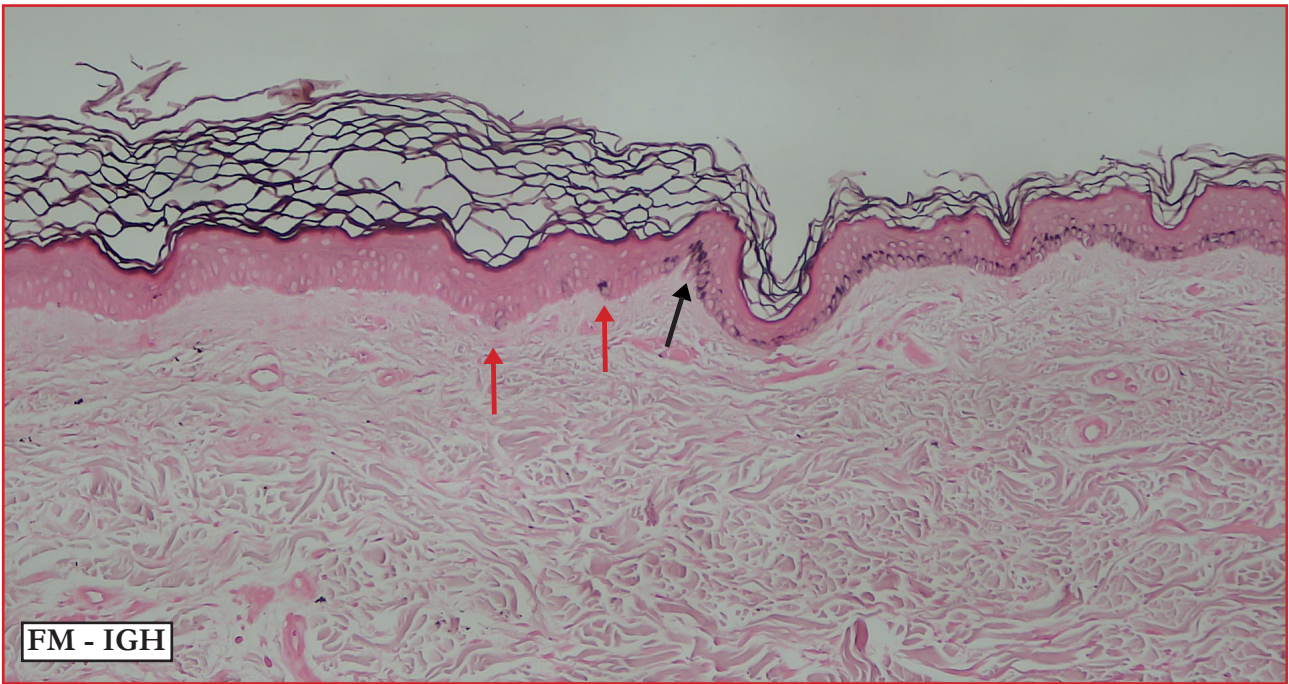


HE: Well defined IGH/NS limit (black arrow); the reference is where hyperkeratosis starts. Moderate basket-weave hyperkeratosis. Slight acanthosis and hypergranulosis. No flattening.

HE: Limite IGH/NS bem definido (seta preta), a referência é o início da hiperqueratose. Moderada hiperqueratose basquet wave. Discretas acantose e hipergranulose. Ausência de retificação.

FONTANA-MASSON (FM):

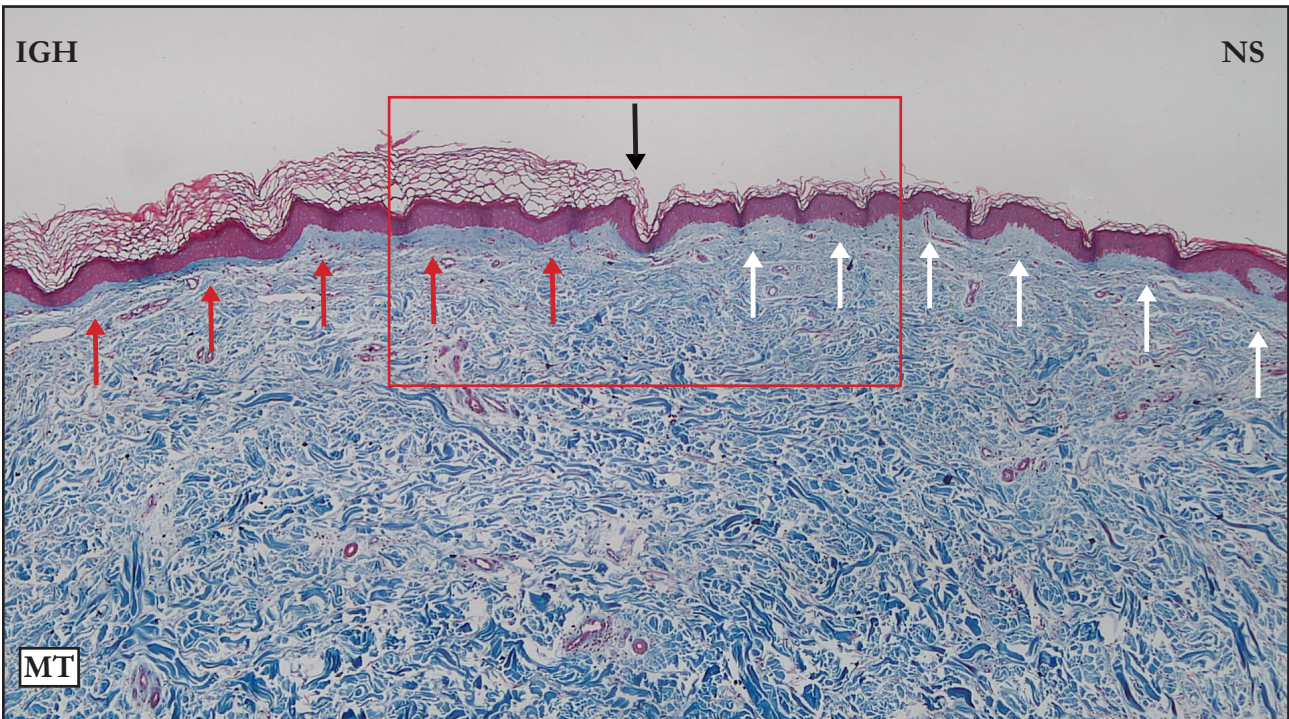


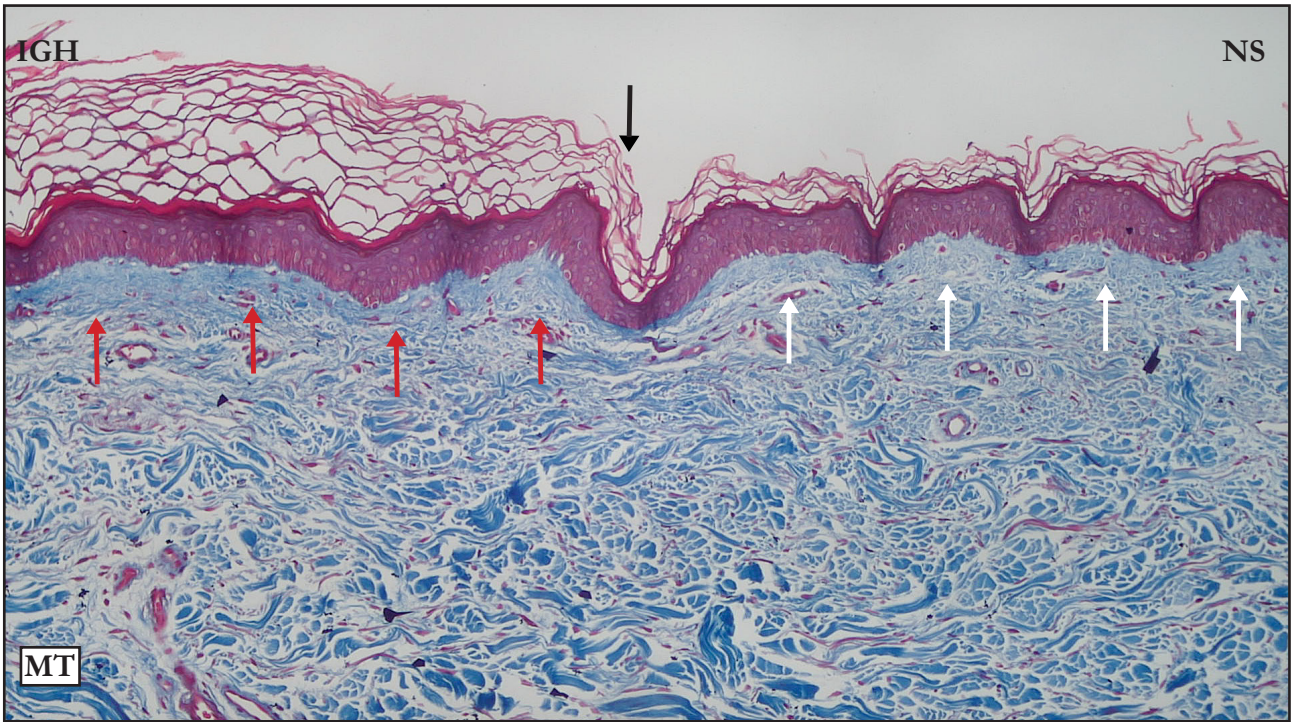


FM: Well-defined IGH/NS limit (black arrow), the reference is the interruption of basal layer melanin pigmentation which coincides with the place where hyperkeratosis starts. Basal layer focal pigmentation (red arrows).

FM: Limite IGH/NS bem definido (seta preta), a referência é a interrupção da pigmentação melânica da camada basal, coincidente com o início da hiperqueratose. Pigmentação focal na camada basal (setas vermelhas)

MASSON'S TRICHOME (MT):



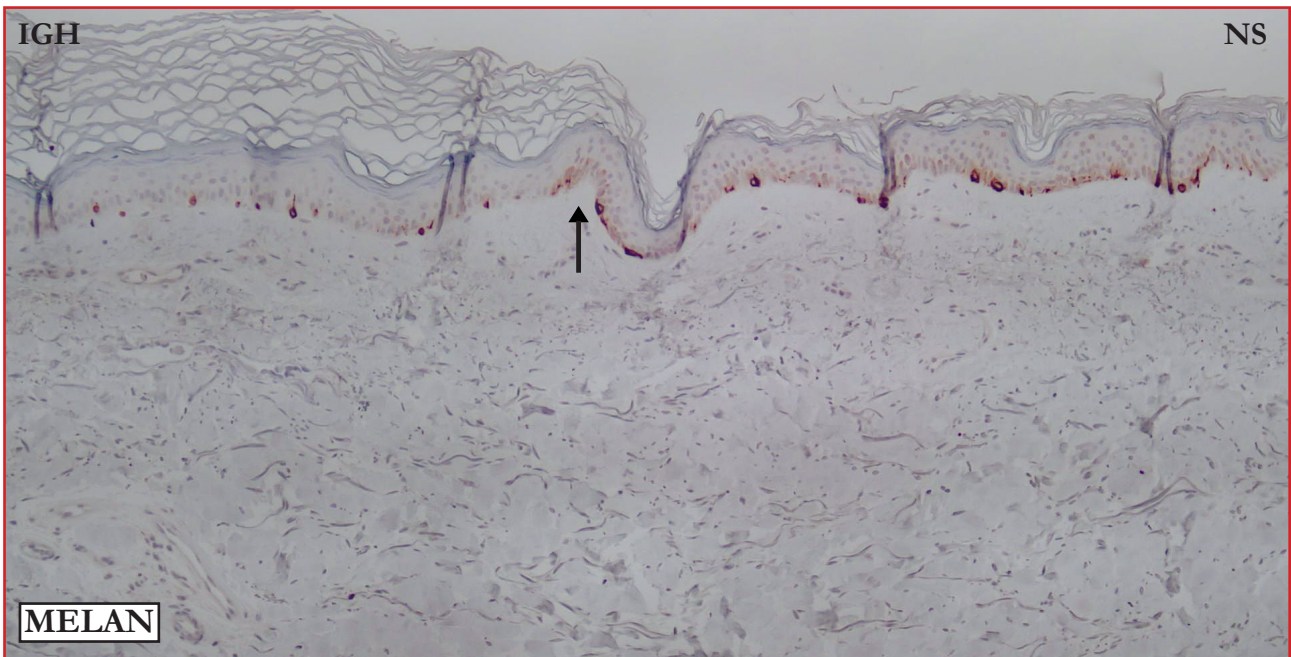


MT: Well defined IGH/NS limit (black arrow); the reference is where hyperkeratosis starts. Compare stain intensity and compacted superficial dermis in IGH area (red arrows) with NS superficial dermis (white arrows).

MT: Limite IGH/NS bem definido (seta preta), a referência é o início da hiperqueratose. Compare a intensidade da coloração e a compactação da derme superficial da IGH (setas vermelhas) com a derme superficial da NS (setas brancas).

MELAN A:

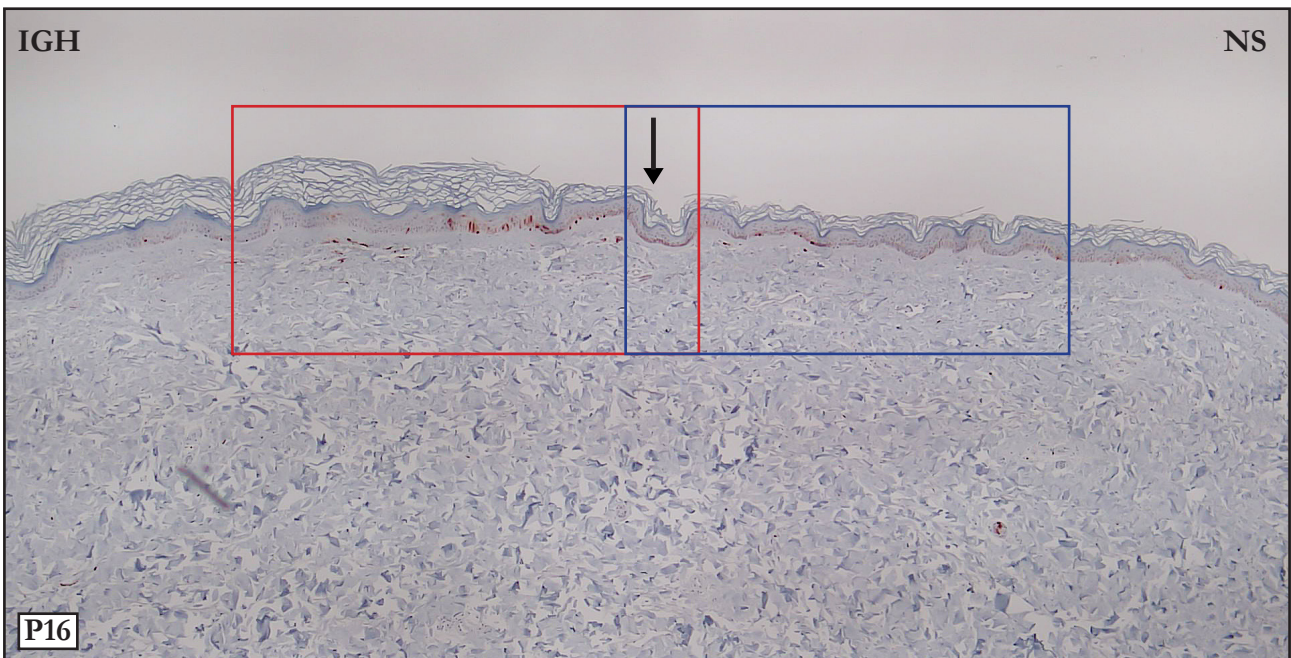


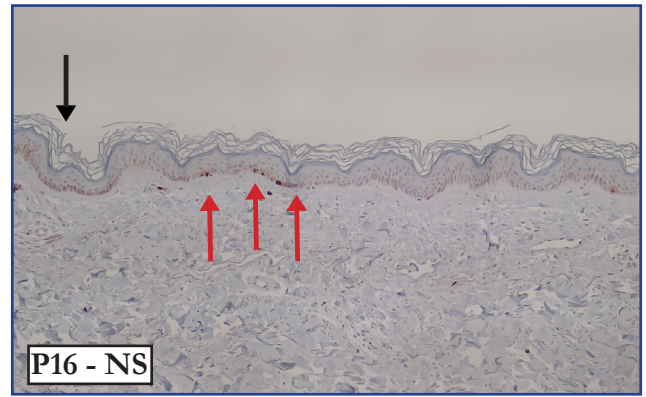
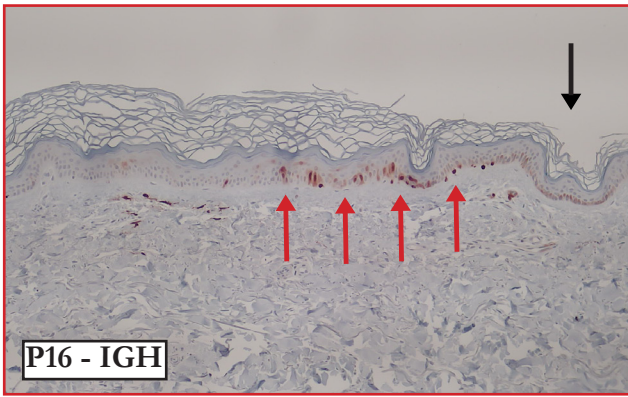


MELAN: Panoramic photo. Black arrow points to the IGH/NS limit; the reference is the reduction in the number of melanocytes.

MELAN: Foto panorâmica. Limite IGH/NS assinalado pela seta preta, a referência é a redução numérica dos melanócitos.

P16:





P16: P16 positive epidermal cells and fibroblasts more numerous in the IGH area.

P16: Células epidérmicas e fibroblastos P16 positivos (setas vermelhas), em maior número no segmento IGH

**Please contact me in case of disagreements,
inconsistencies or errors: samir@dermocentro.com.br**