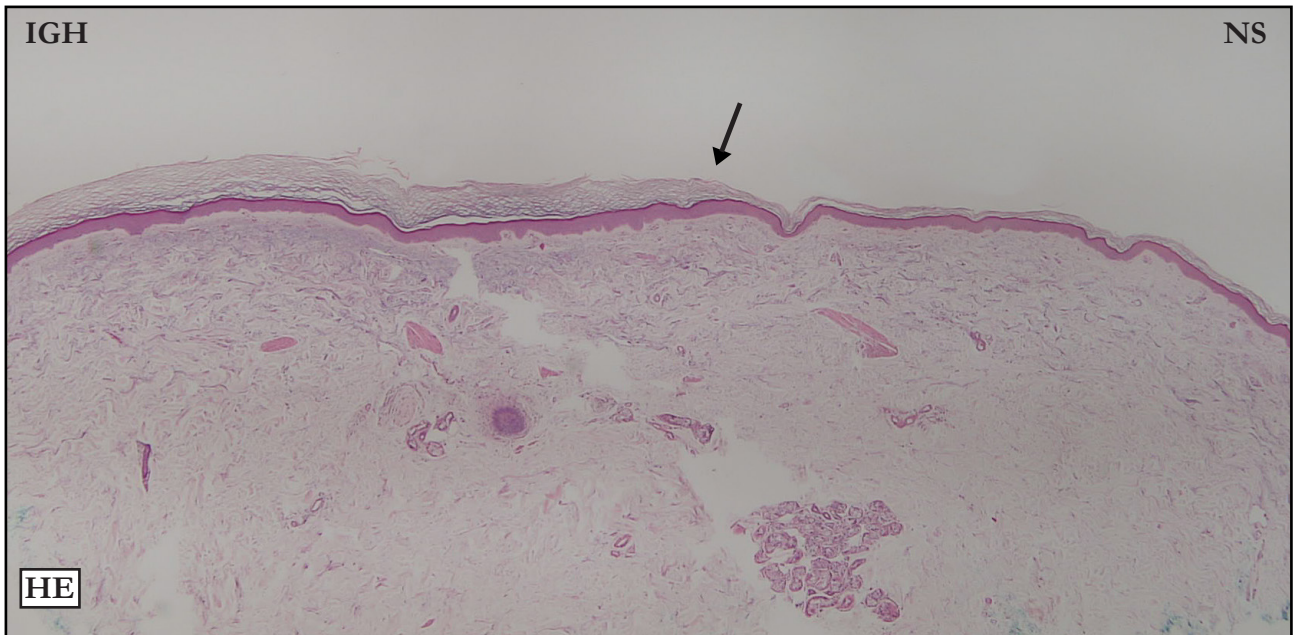


CASE 13

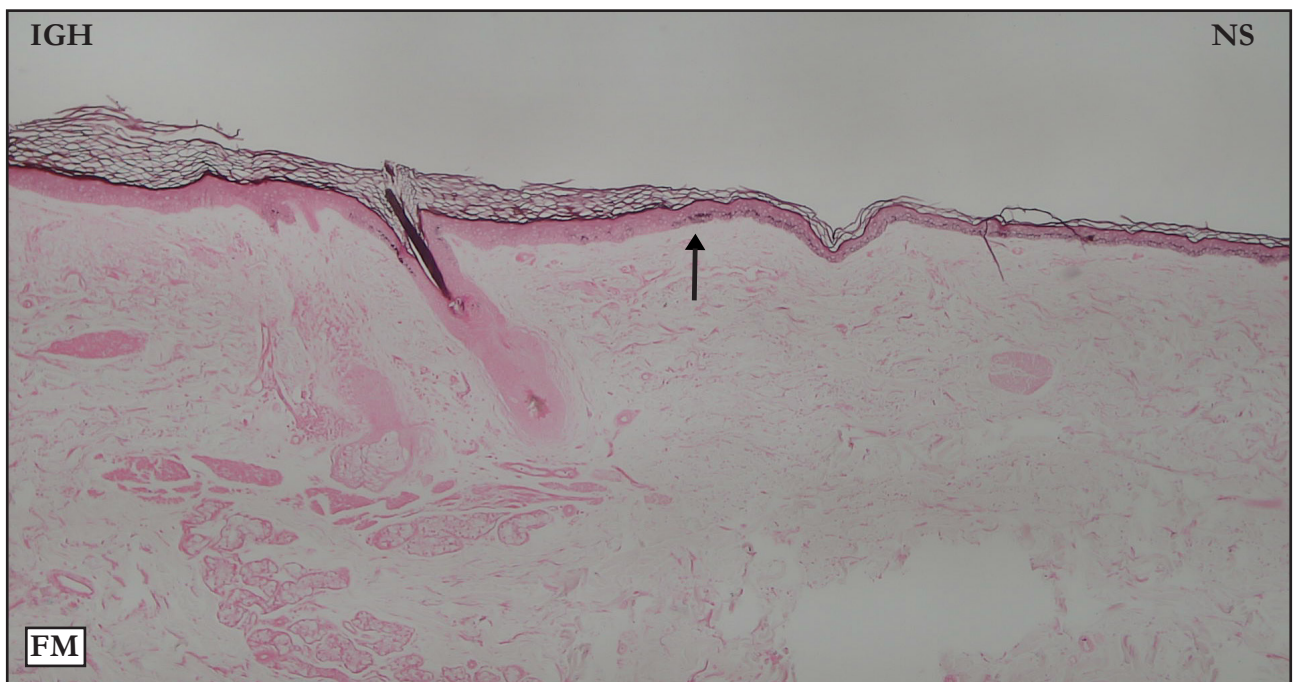
HEMATOXYLIN-EOSIN (HE):

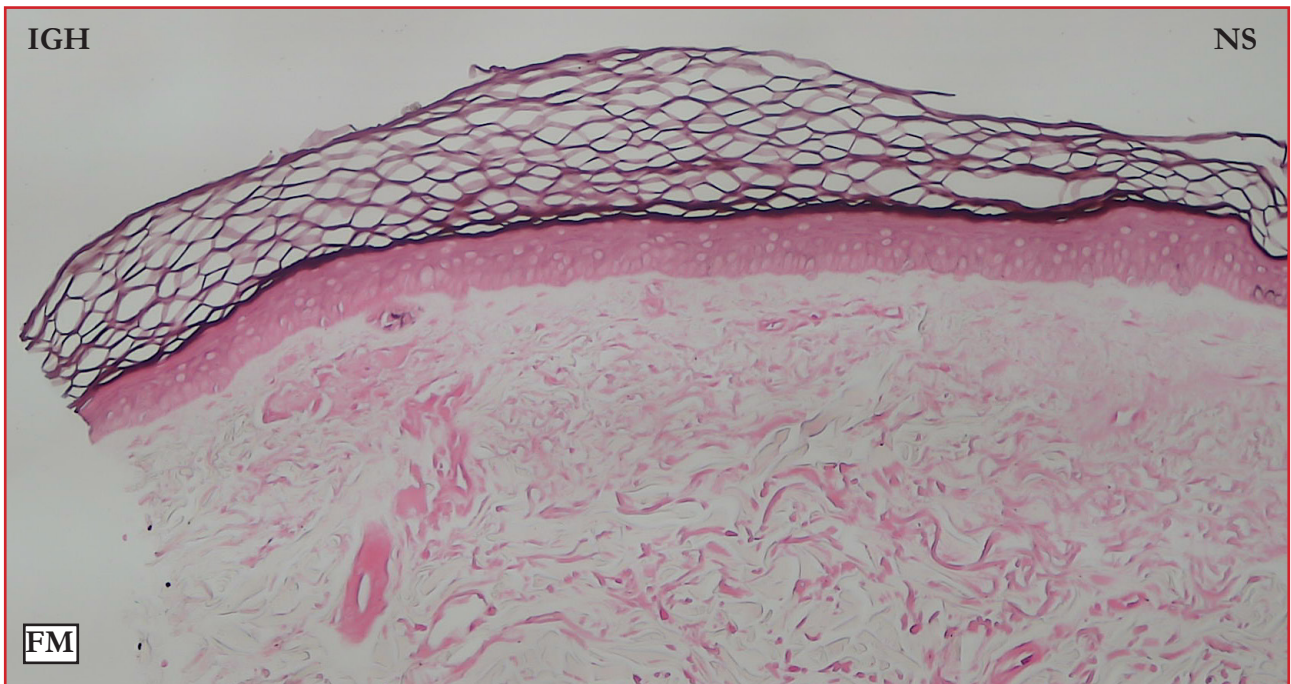


HE: Poorly defined IGH/NS limit (blue arrow), because hyperkeratosis is progressive. Intense basket-weave hyperkeratosis. Slight acanthosis and hypergranulosis. No atrophy or flattening.

HE: Limite IGH/NS mal definido (seta preta), porque o início da hiperqueratose é progressivo. Intensa hiperqueratose basquet wave. Discretas acantose e hipergranulose. Atrofia ou retificação ausentes.

FONTANA-MASSON (FM):

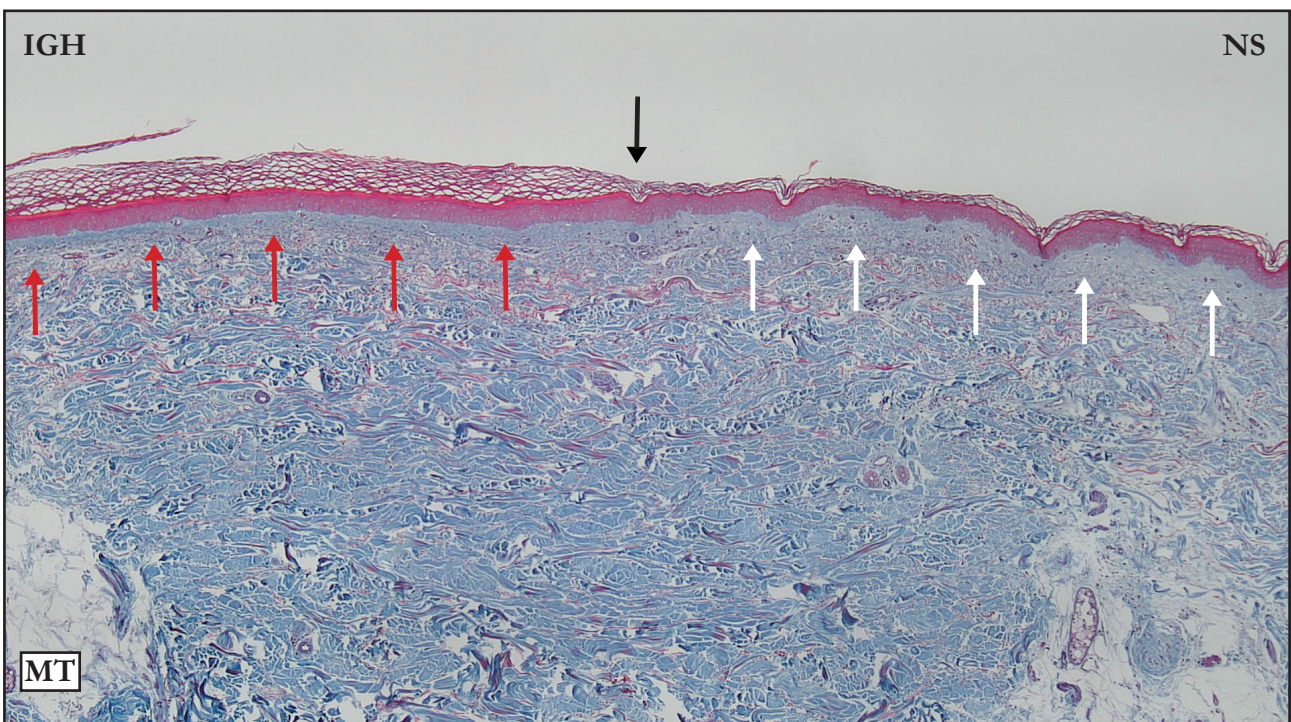


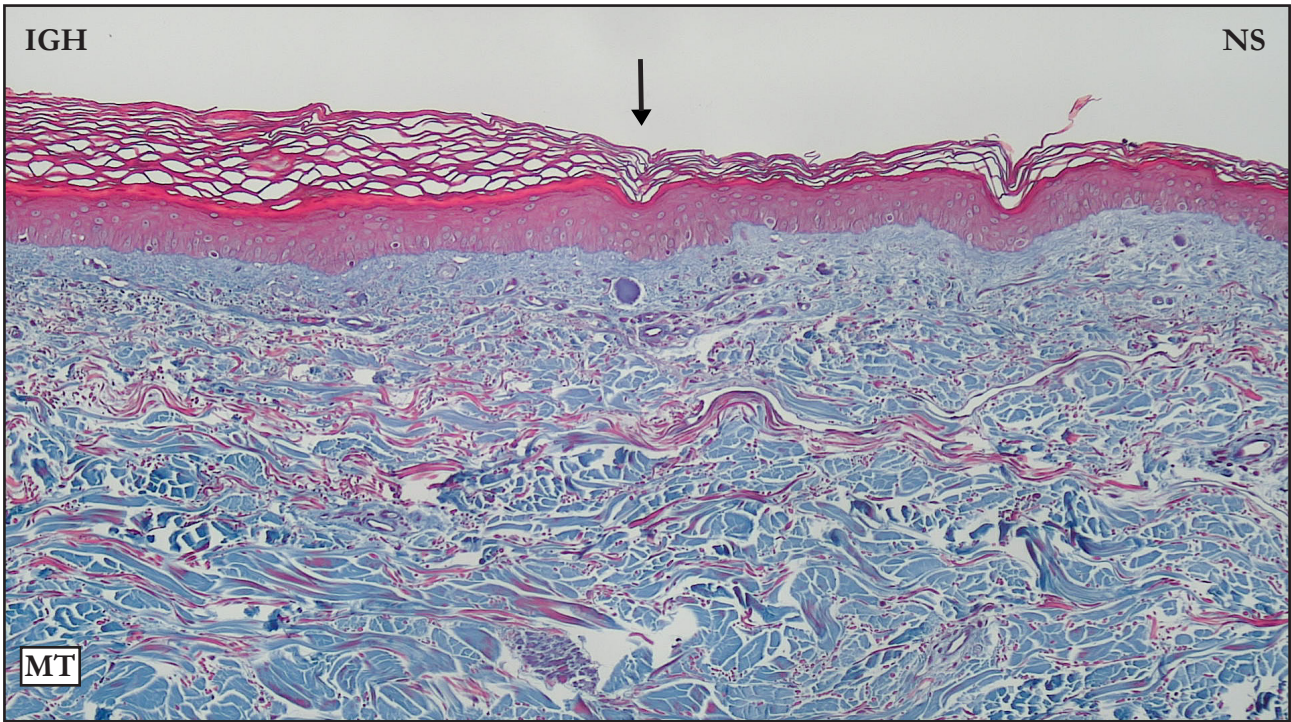


FM: Well defined IGH/NS limit (black arrow); the reference is the interruption of basal layer melanin. No melanin in IGH basal layer.

FM: Limite IGH/NS bem definido (seta preta), a referência é a interrupção da pigmentação melânica da camada basal. Ausência de pigmento na camada basal of IGH.

MASSON'S TRICHRROME (MT):

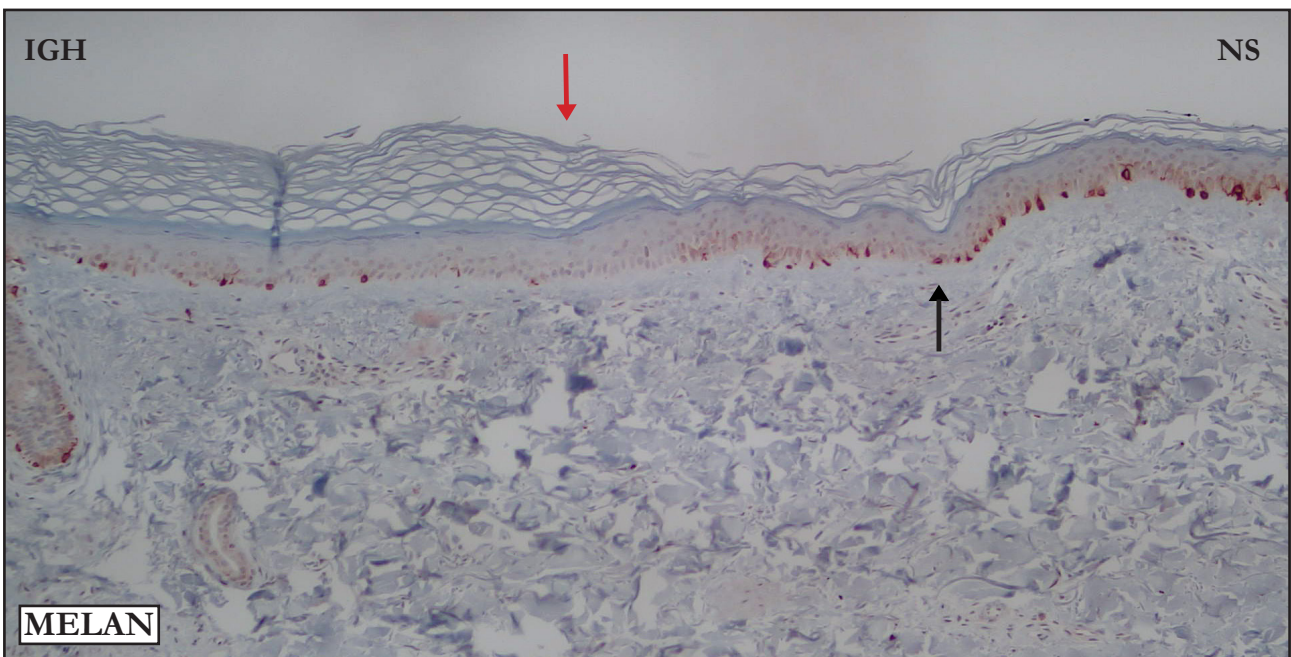


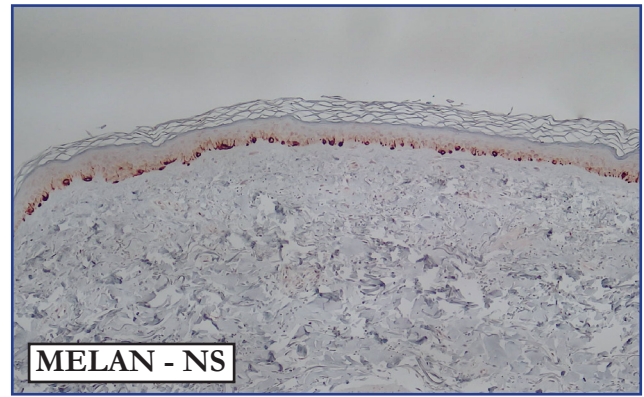
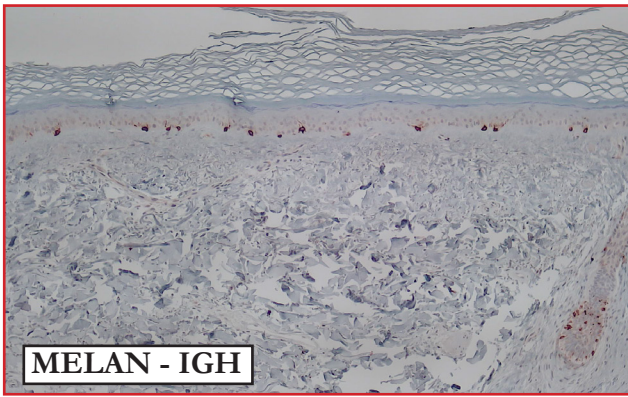


MT: Poorly defined IGH/NS limit (black arrow), because the hyperkeratosis is progressive. Compare stain intensity and compacted superficial dermis in IGH area (red arrows) with NS superficial dermis (white arrows).

MT: Limite IGH/NS mal definido (seta preta), porque o início da hiperqueratose é progressivo. Compare a intensidade da coloração e a compactação da derme superficial da IGH (setas vermelhas) com a derme superficial da NS (setas brancas)

MELAN A:

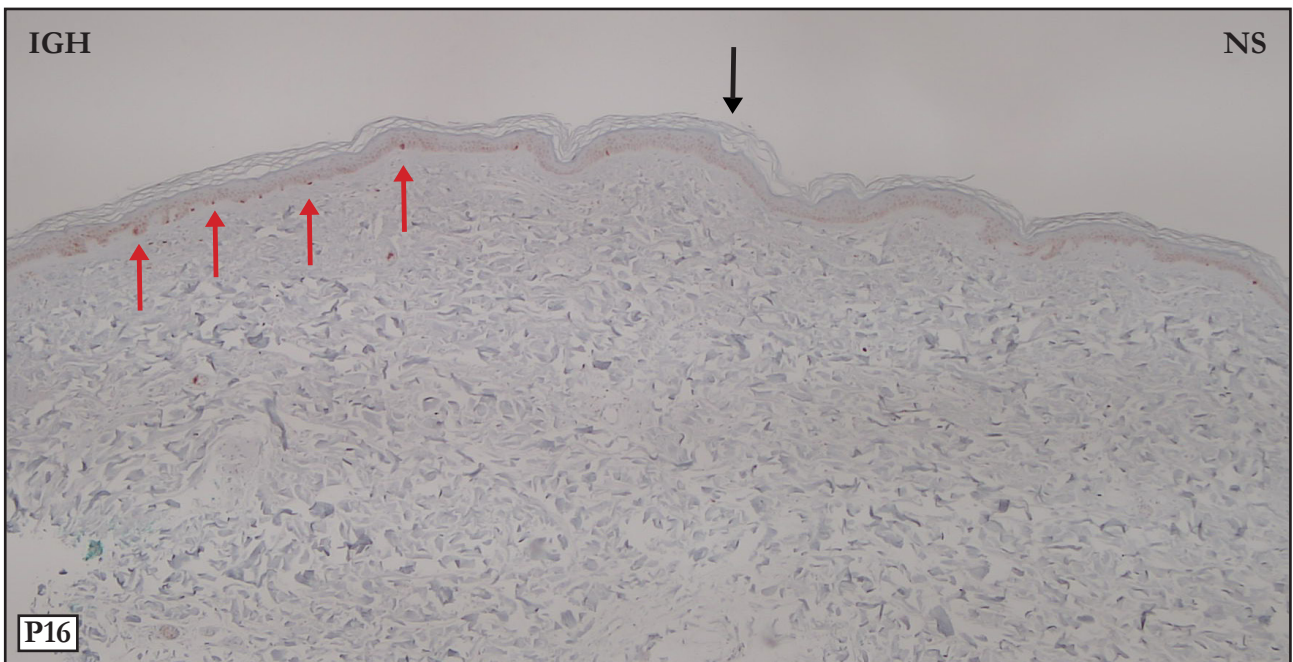




MELAN: Panoramic photo. Black arrow points to IGH/NS limit which does not coincide with hyperkeratosis limit (red arrow). Upper microphotographs. Compare the number of melanocytes in IGH and NS areas

MELAN: Foto panorâmica. Limite IGH/NS assinalado pela seta preta, não coincidente com o limite da hiperqueratose (seta vermelha). Microfotografias acima. Compare a quantidade de melanócitos nos segmentos IGH e NS.

P16:



P16: Few P16 positive epidermal cells (red arrows). NS – Negative

P16: Poucas células epidérmicas P16 positivas (setas vermelhas). NS – Negativo

Please contact me in case of disagreements,
inconsistencies or errors: samir@dermocentro.com.br