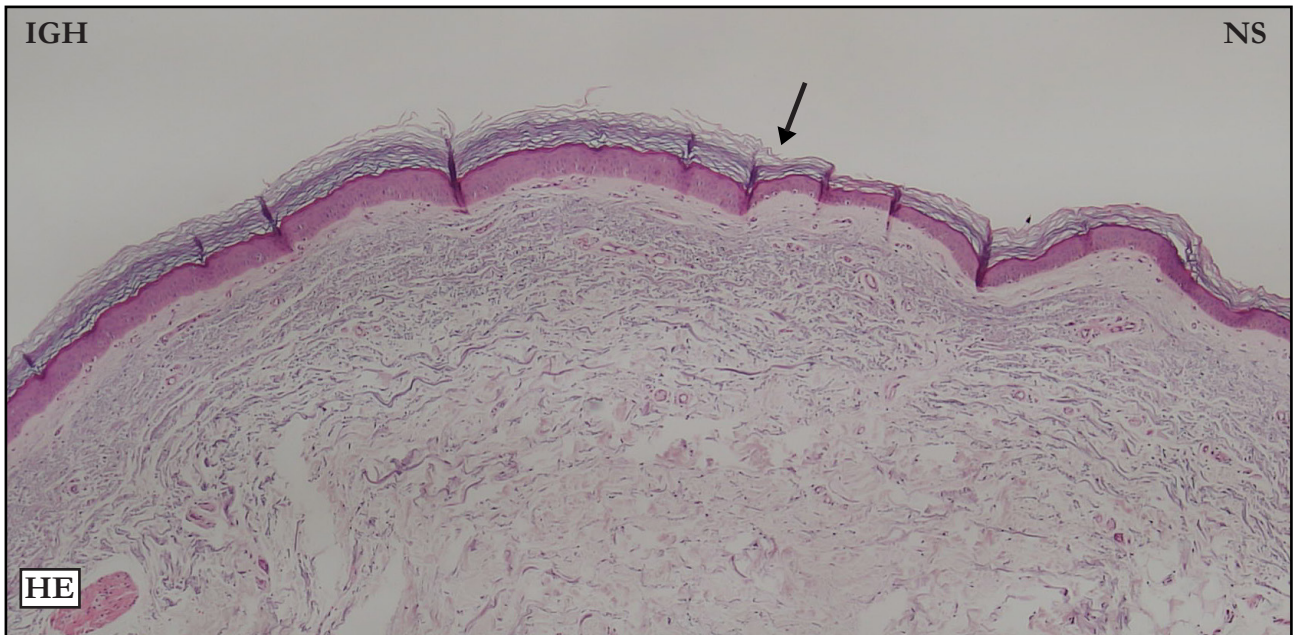


CASE 14

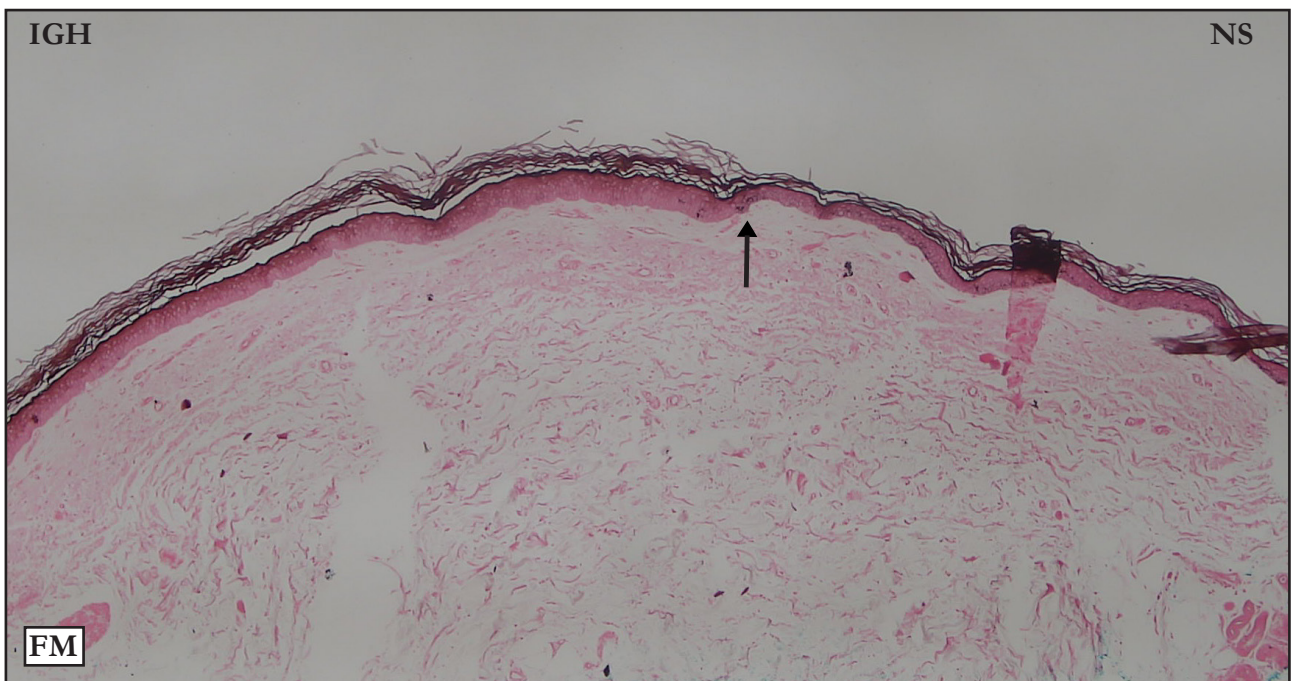
HEMATOXYLIN-EOSIN (HE):



HE: Well defined IGH/NS limit (black arrow); the reference is where hyperkeratosis starts. Intense compact and basket-weave hyperkeratosis. Moderate acanthosis and flattening.

HE: Limite IGH/NS bem definido (seta preta), a referência é o início da hiperqueratose. Intensa hiperqueratose compact e basquet wave. Moderadas acantose e retificação.

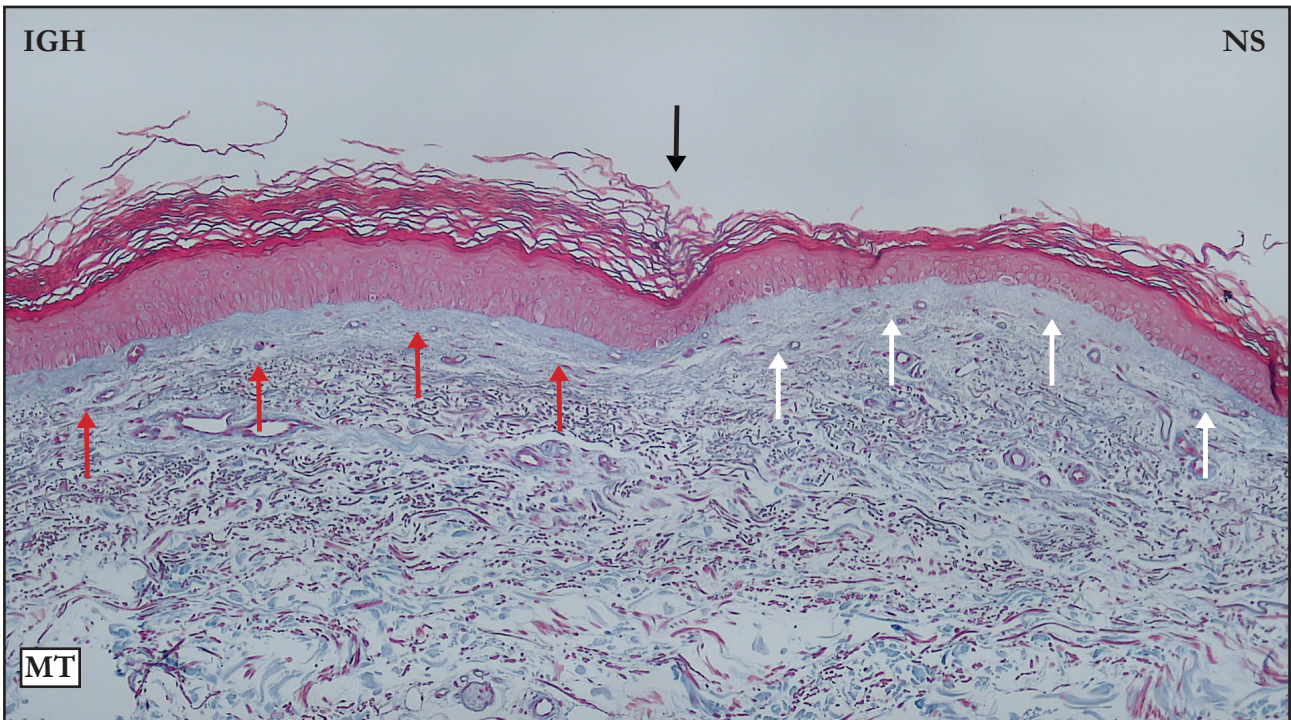
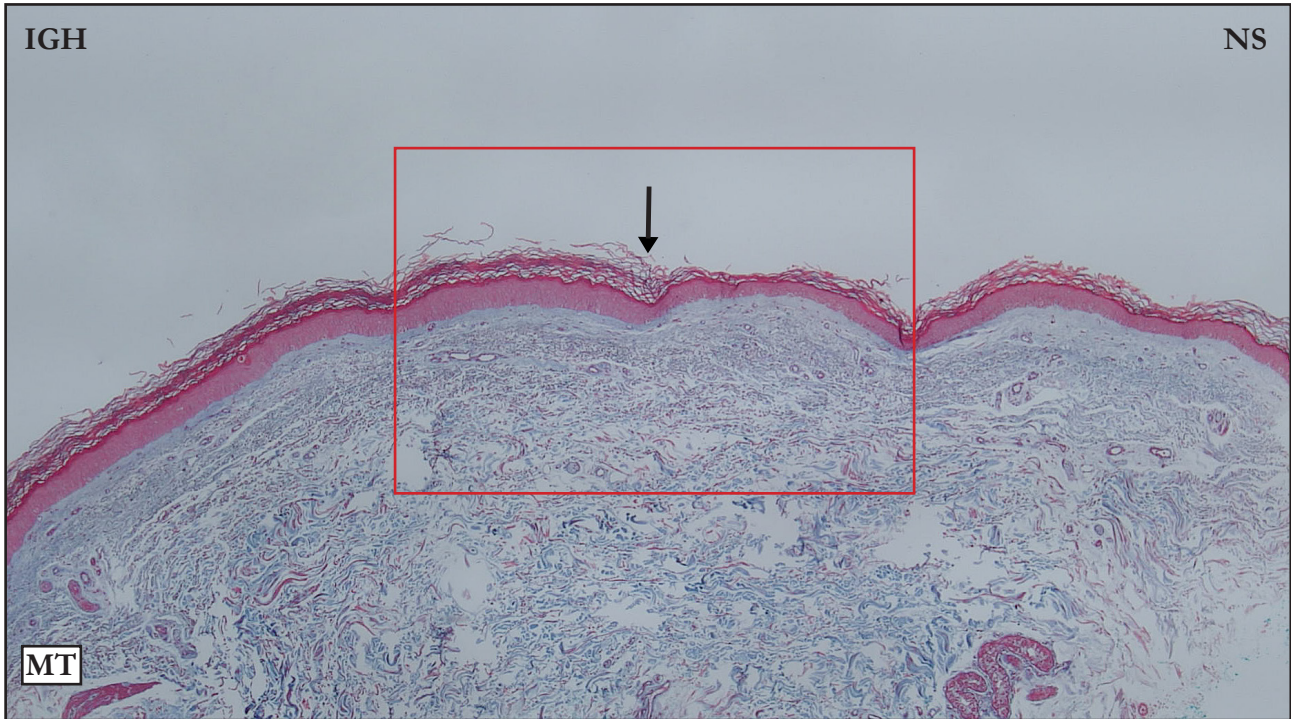
FONTANA-MASSON (FM):



FM: Well defined IGH/NS limit (black arrow); the reference is the interruption of basal layer melanin. No melanin in IGH basal layer.

FM: Limite IGH/NS bem definido (seta preta), a referência é a interrupção da pigmentação melânica da camada basal. Ausência de pigmento na camada basal.

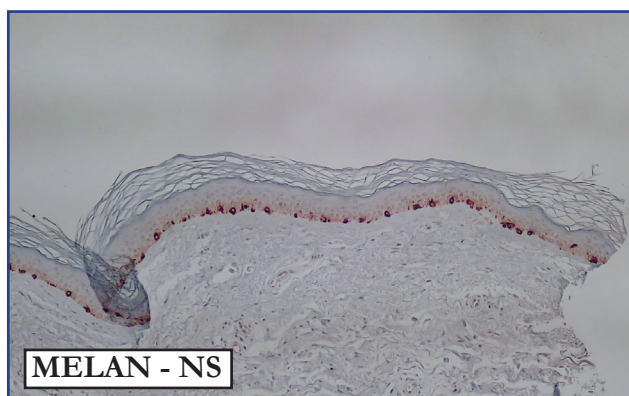
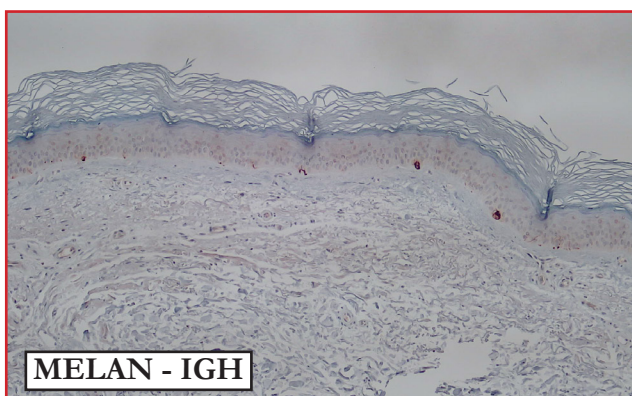
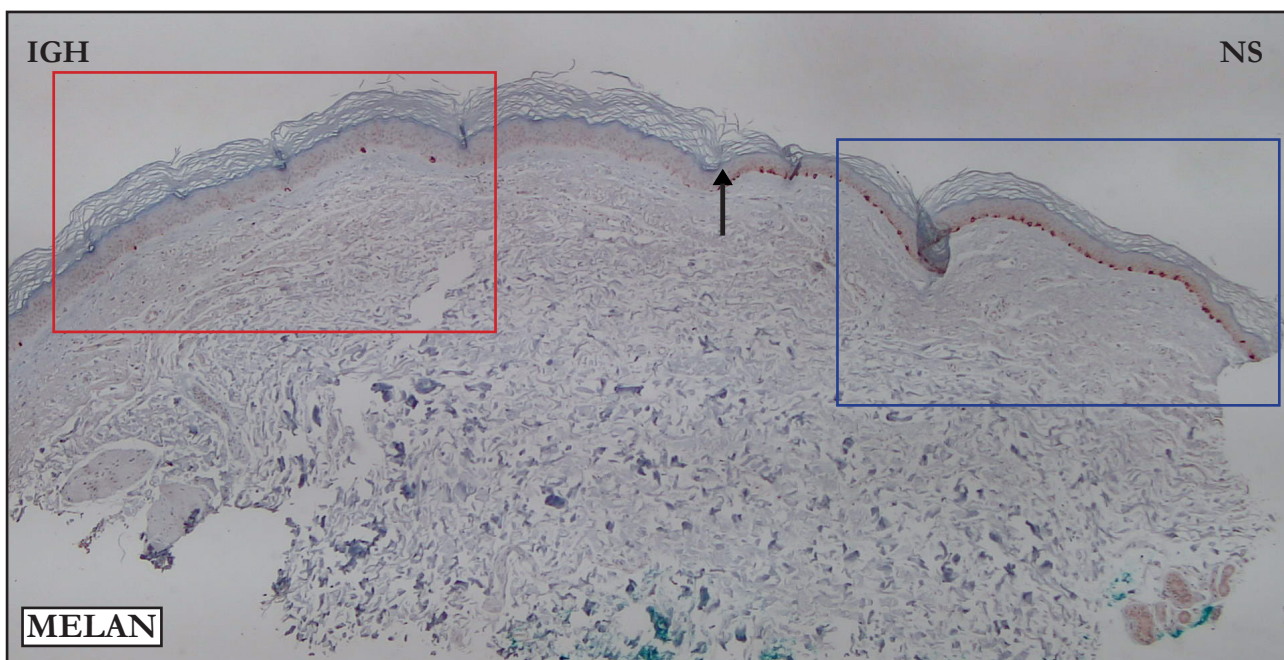
MASSON'S TRICHROME (MT):



MT: Well defined IGH/NS limit (black arrows); the reference is where hyperkeratosis starts. Compare stain intensity and compacted superficial dermis in IGH area (red arrows) with NS superficial dermis (white arrows).

MT: Limite IGH/NS bem definido (seta preta), a referência é o início da hiperqueratose. Compare a intensidade da coloração e a compactação da derme superficial da IGH (setas vermelhas) com a derme superficial da NS (setas branca).

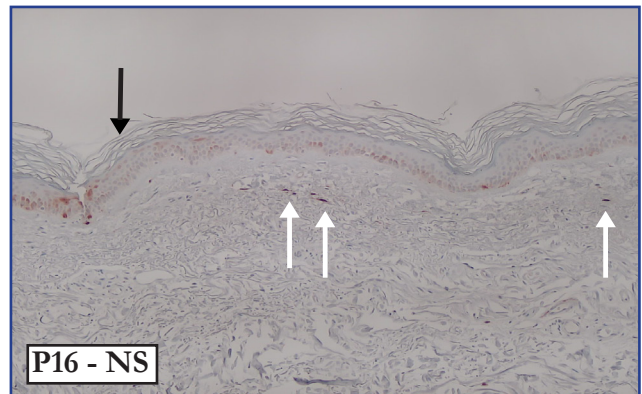
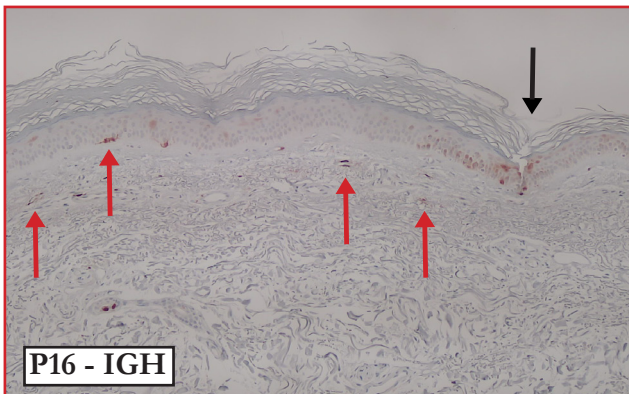
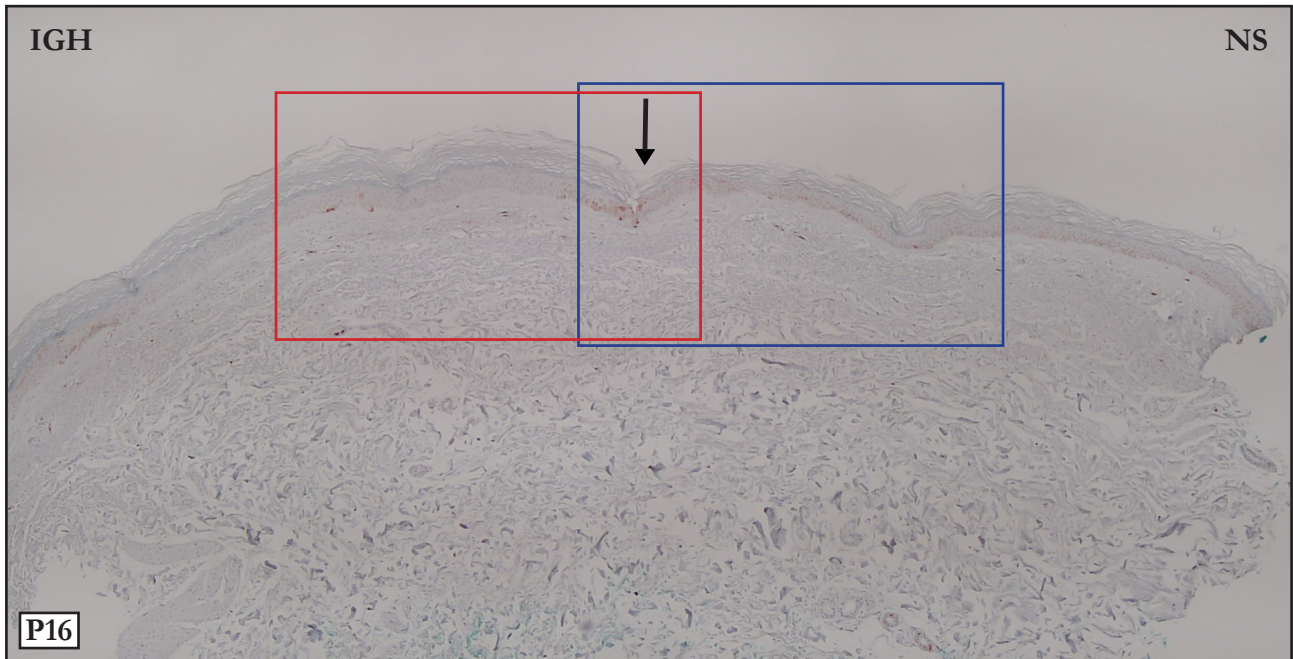
MELAN A:



MELAN: Panoramic photo. Black arrow points to the IGH/NS limit; the reference is the reduction in the number of melanocytes. Upper photo. Compare the number of melanocytes in IGH and NS areas.

MELAN: Foto panorâmica. Limite IGH/NS assinalado pela seta preta, a referência é a redução numérica dos melanócitos. Acima. Compare a quantidade de melanócitos nos segmentos IGH e NS.

P16:



P16: IGH - Few positive epidermal cells and fibroblasts (red arrows).NS - Positive dermal fibroblasts (white arrows).

P16: IGH - Poucas epidérmicas e fibroblastos positivos (setas vermelhas). NS - Fibroblastos dérmicos positivos (setas brancas).

Please contact me in case of disagreements,
inconsistencies or errors: samir@dermocentro.com.br