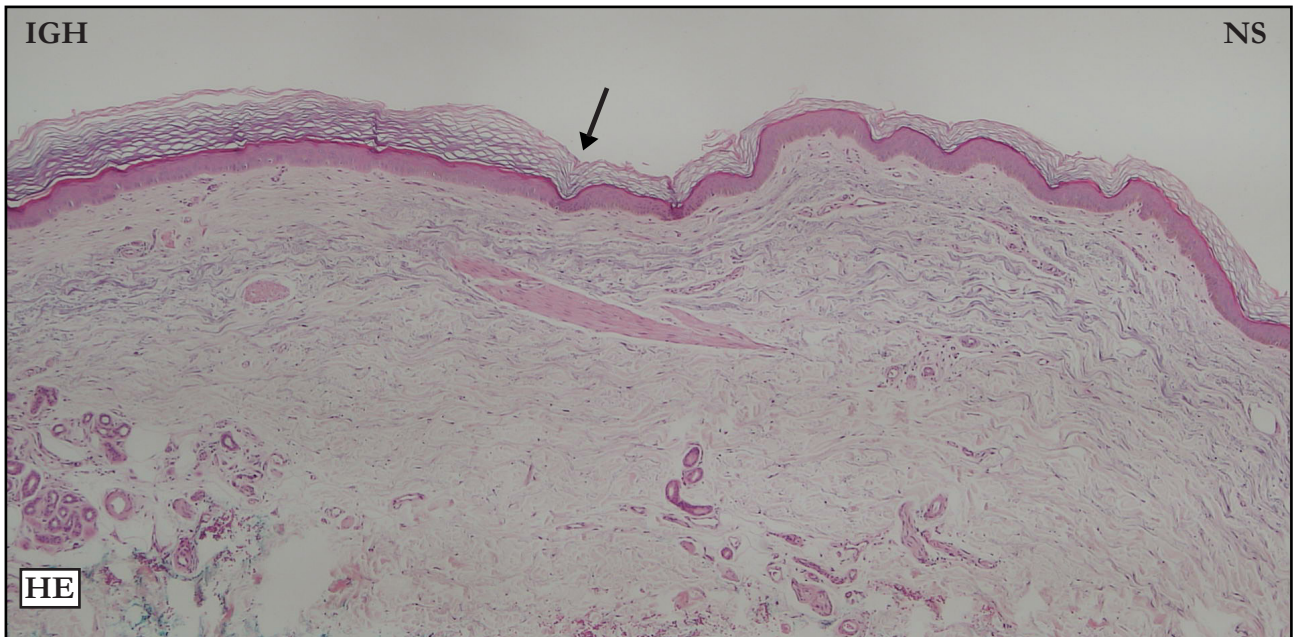


## CASE 15

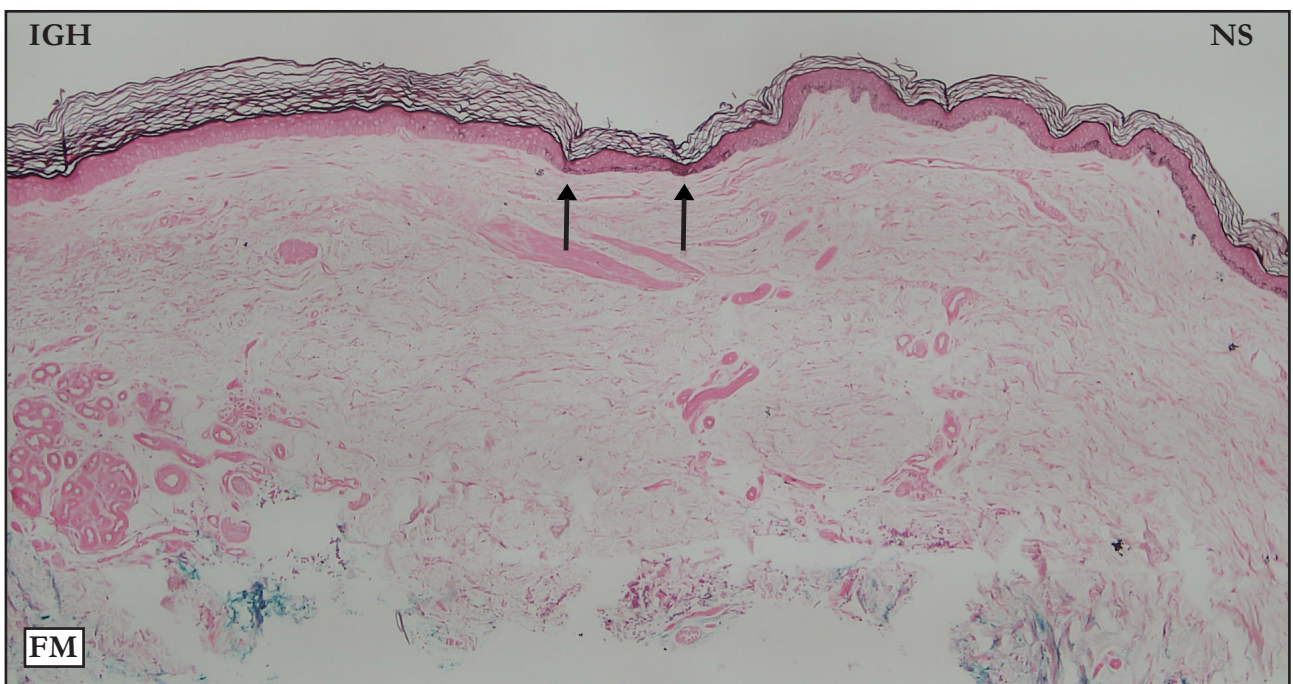
### HEMATOXYLIN-EOSIN (HE):



**HE:** Well defined IGH/NS limit (black arrow), the reference is where hyperkeratosis starts. Moderate basket-weave hyperkeratosis. No acanthosis or hypergranulosis. Moderate flattening.

**HE:** Limite IGH/NS (seta preta), a referência é o início da hiperqueratose. Moderada hiperqueratose basquet wave. Ausência de acantose ou hipergranulose. Moderada retificação.

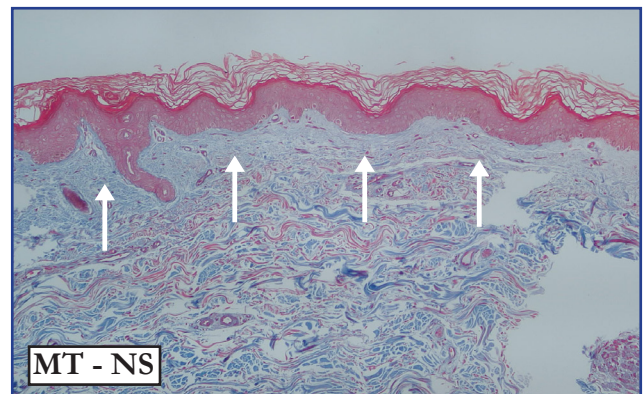
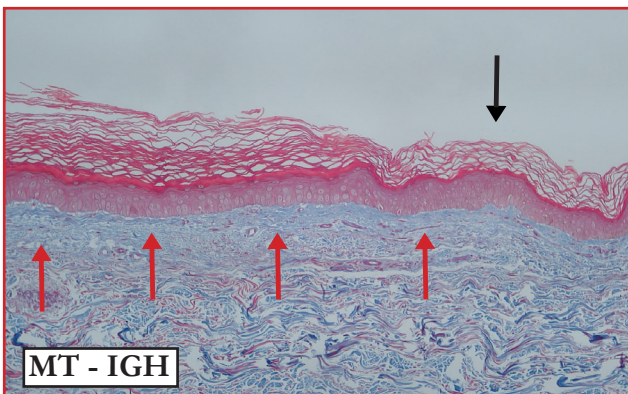
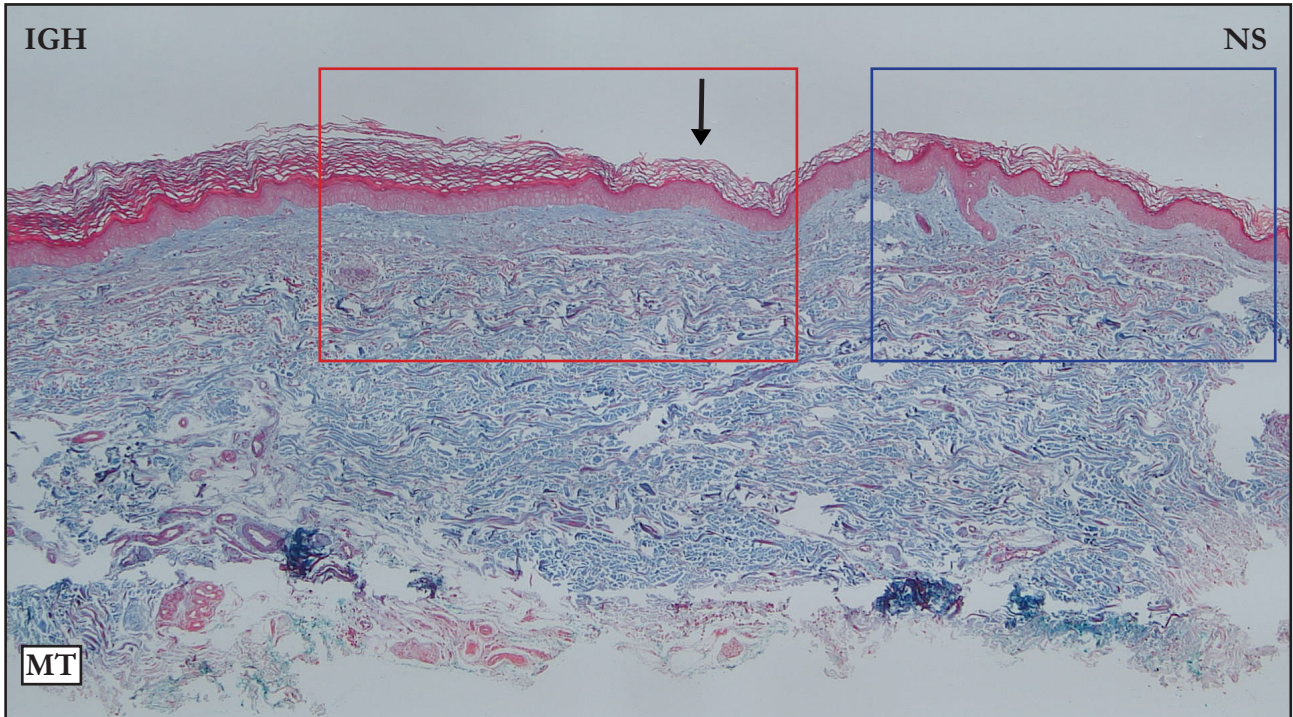
### FONTANA-MASSON (FM):



**FM:** Poorly defined IGH/NS limit (black arrows); the reference is the interruption of basal layer melanin. No basal layer melanin.

**FM:** Limite IGH/NS mal definido, a referência é a interrupção da pigmentação melânica da camada basal (seta preta). Ausência de pigmento na camada basal.

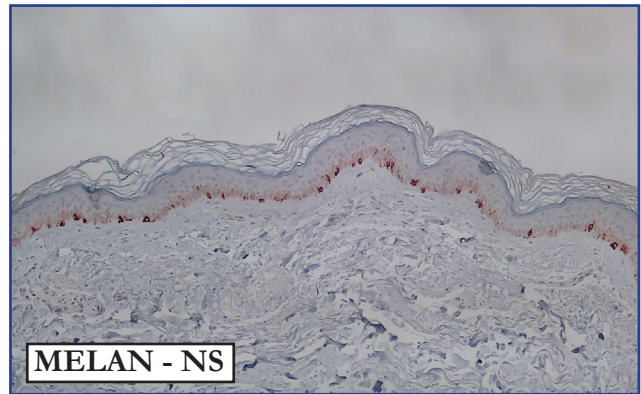
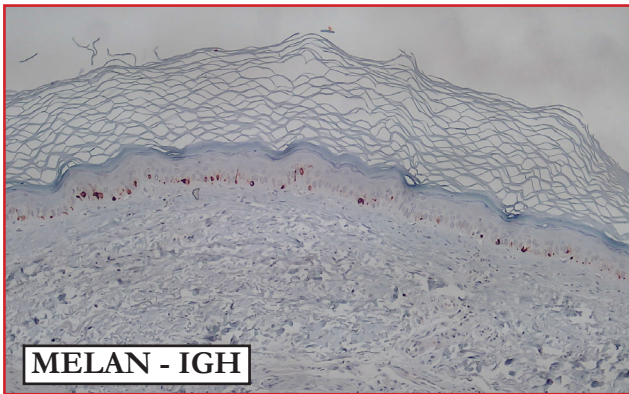
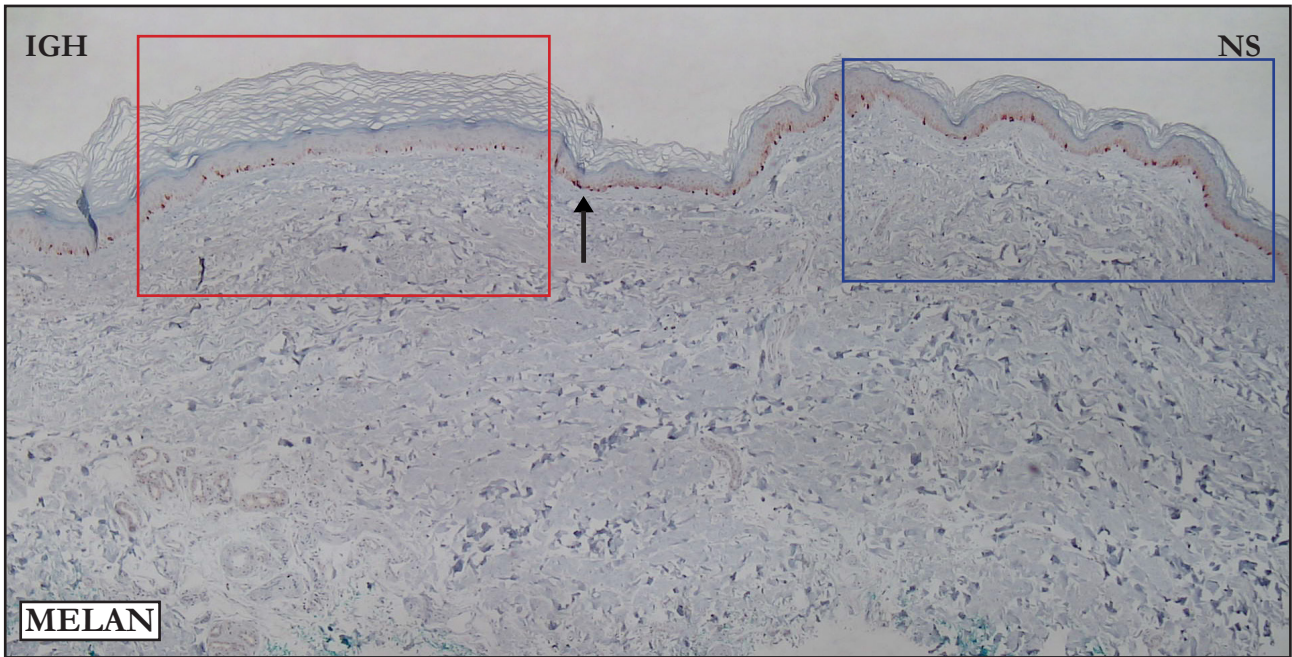
### MASSON'S TRICHROME (MT):



**MT:** Poorly defined IGH/NS limit (black arrow), the reference is the onset of the hyperkeratosis. Compare stain intensity and compacted superficial dermis in IGH area (red arrows) with NS superficial dermis (white arrows).

**MT:** Limite IGH/NS mal definido (seta preta). Compare a intensidade da coloração e a compactação da derme superficial da IGH (setas vermelhas) com a derme superficial da NS (setas brancas).

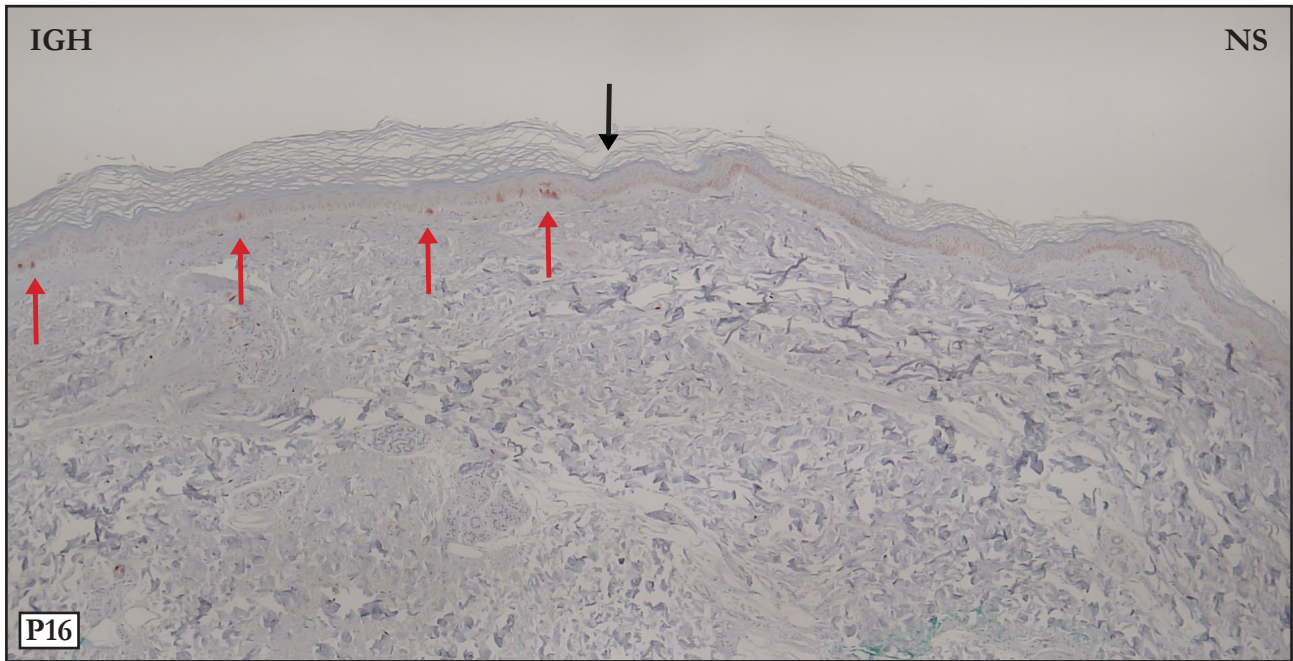
**MELAN A:**



**MELAN:** Panoramic photo. Poorly defined IGH/NS limit (black arrow); the reference is the reduction in the number of melanocytes. Upper photos: Compare the number and size of melanocytes in IGH (red rectangle) and NS (blue rectangle) areas.

**MELAN:** Foto panorâmica. Limite IGH/NS mal definido, assinalado pela seta preta, a referência é a redução numérica dos melanócitos. Acima: Compare a quantidade e o tamanho de melanócitos nos segmentos IGH (retângulo vermelho) e NS (retângulo azul)

**P16:**



**P16:** IGH - Few P16 positive epidermal cells (red arrows) in IGH area.

**P16:** Segmento IGH com poucas células epidérmicas P16 positivas (setas vermelhas).

**Please contact me in case of disagreements,  
inconsistencies or errors: [samir@dermocentro.com.br](mailto:samir@dermocentro.com.br)**