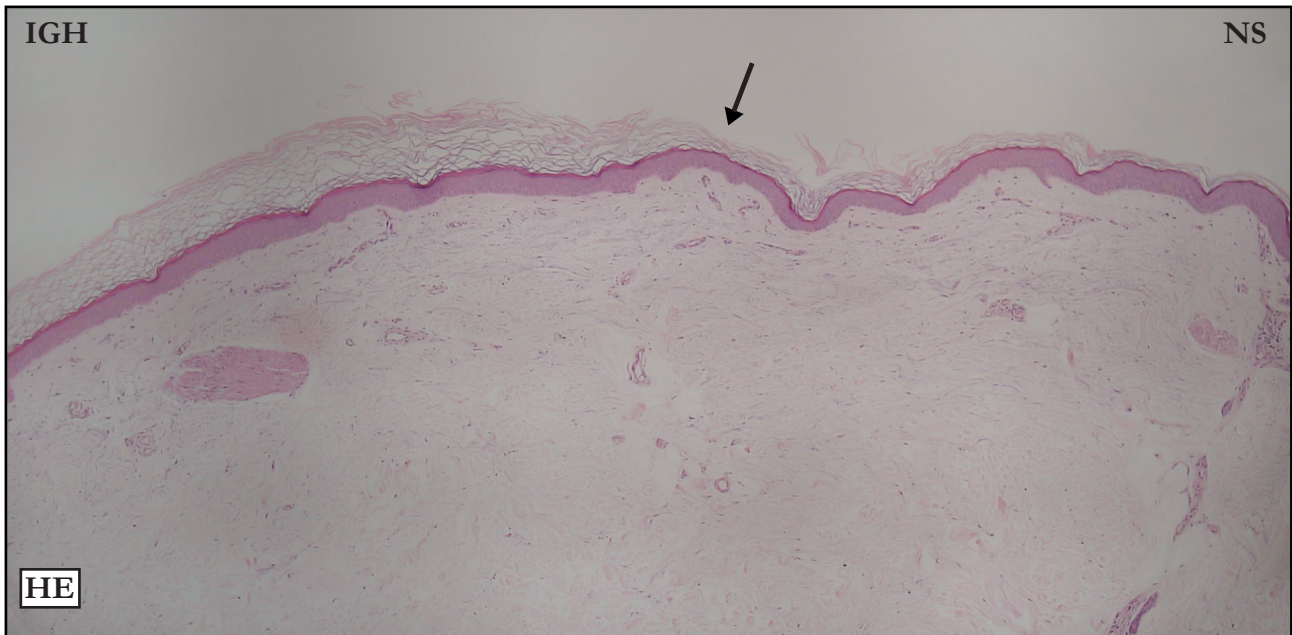


## CASE 16

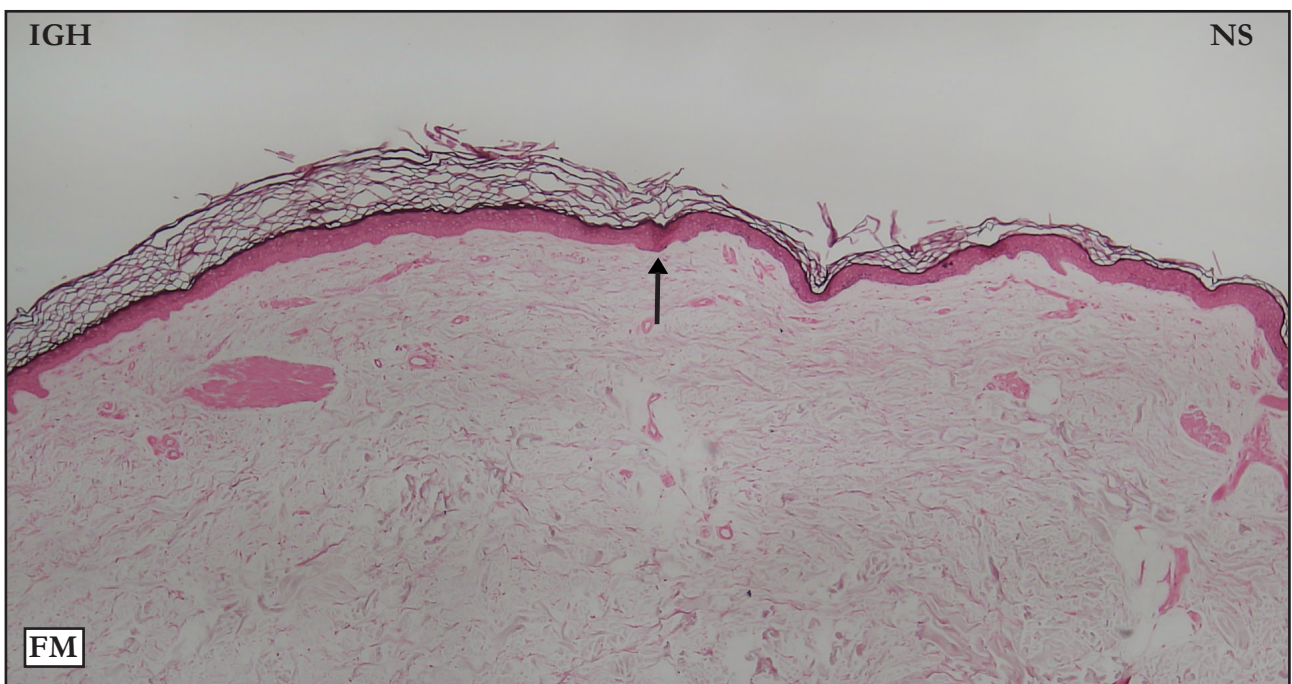
### HEMATOXYLIN-EOSIN (HE):



**HE:** Well defined IGH/NS limit (black arrow); the reference is where hyperkeratosis starts. Intense basket-weave hyperkeratosis. Slight acanthosis and flattening.

**HE:** Limite IGH/NS bem definido (seta preta), a referência é o início da hiperqueratose. Intensa hiperqueratose basquet wave. Discretas acantose e retificação.

### FONTANA-MASSON (FM):

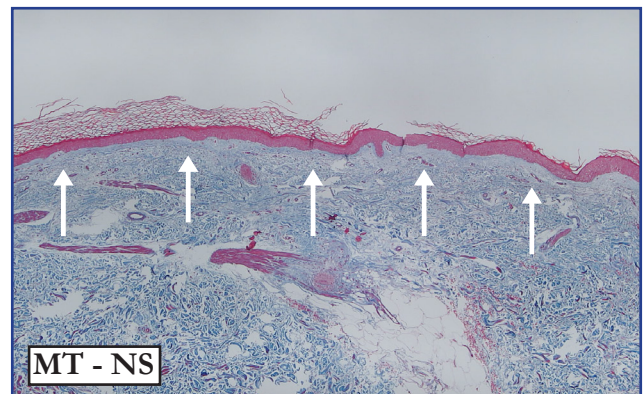
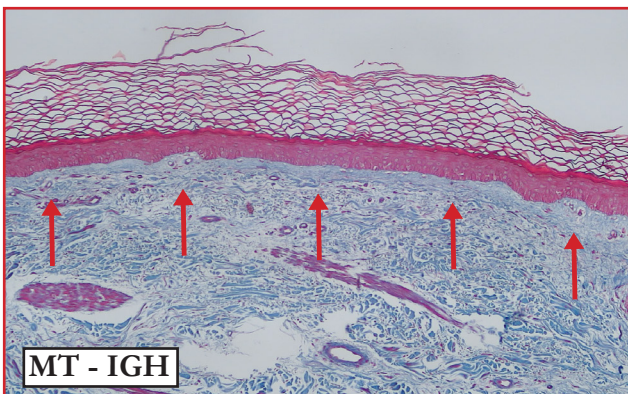
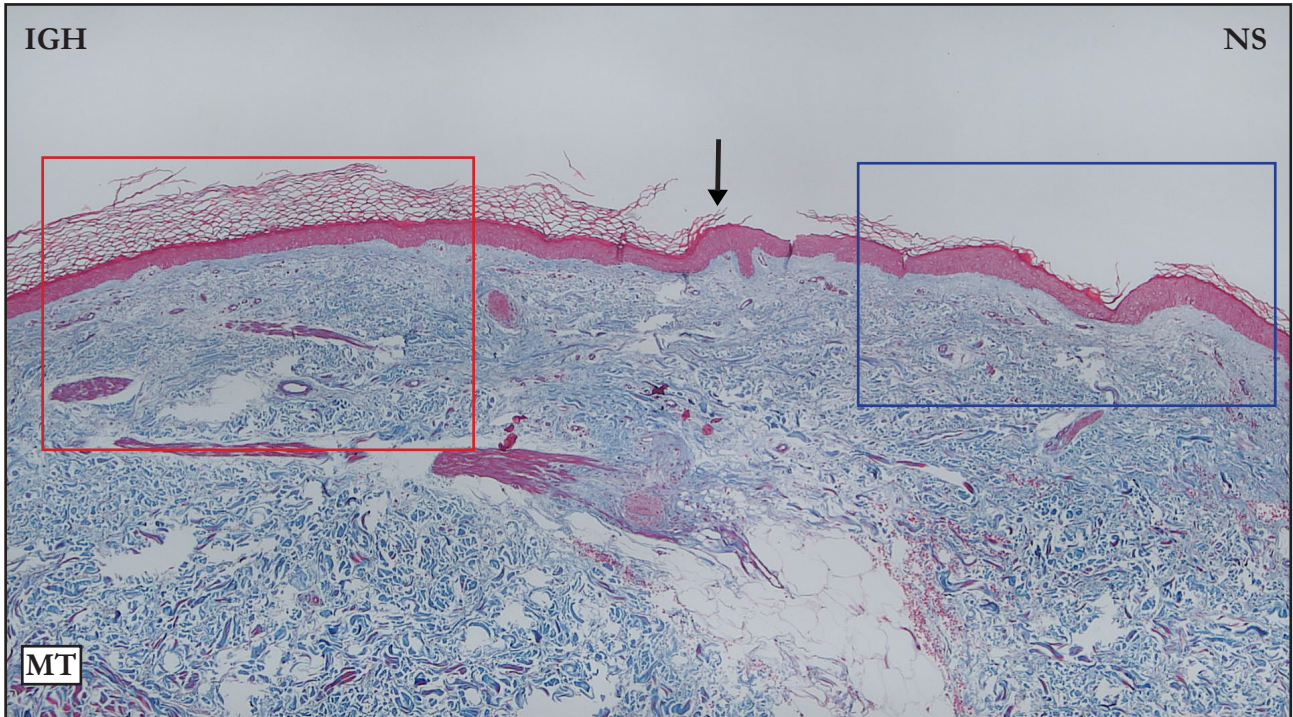




**FM:** Well defined IGH/NS limit (black arrow); the reference is the interruption of basal layer melanin. No basal layer melanin in the IGH area.

**FM:** Limite IGH/NS bem definido (seta preta), a referência é a interrupção da pigmentação melânica da camada basal. Ausência de pigmento na camada basal.

### MASSON'S TRICHROME (MT):

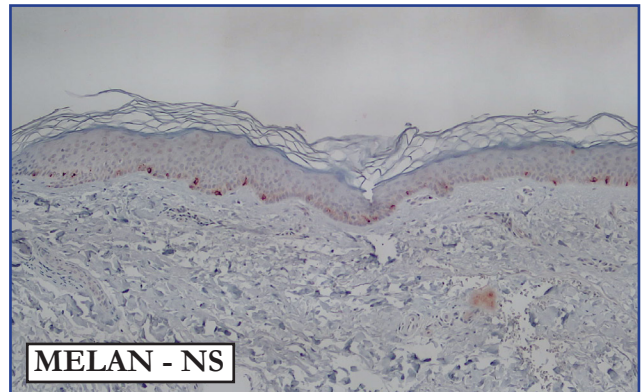
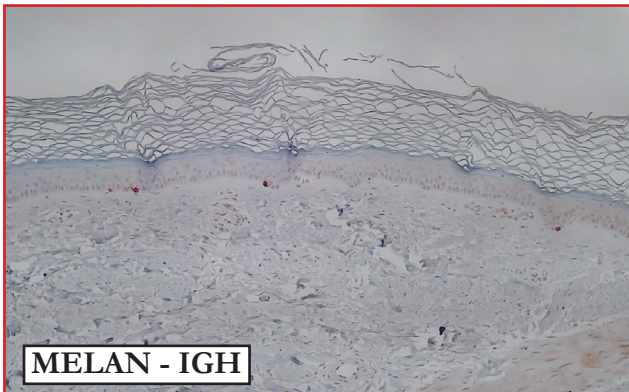
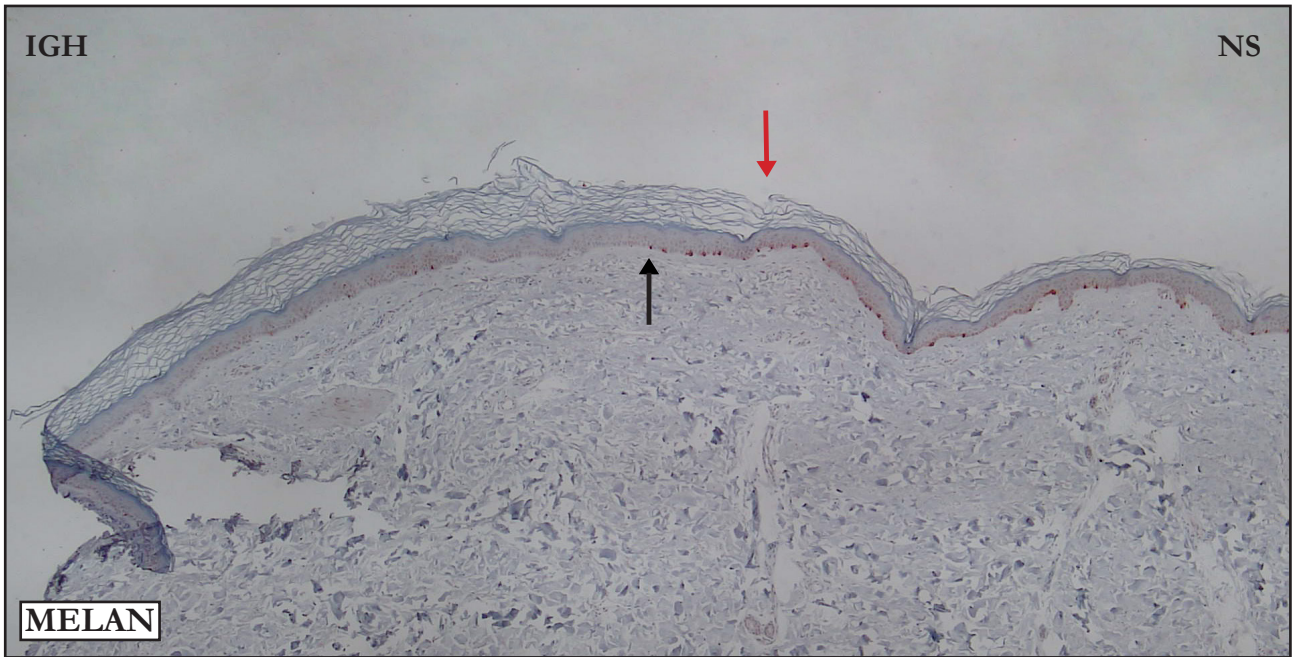


**MT:** Well defined IGH/NS limit (black arrow); the reference is where hyperkeratosis starts. Compare stain intensity and compacted superficial dermis in IGH area (red arrows) with NS superficial dermis (white arrows).

**MT:** Limite IGH/NS bem definido (seta preta), a referência é o início da hiperqueratose. Compare a intensidade da coloração e a compactação da derme superficial da IGH (setas vermelhas) com a derme superficial da NS (setas brancas).



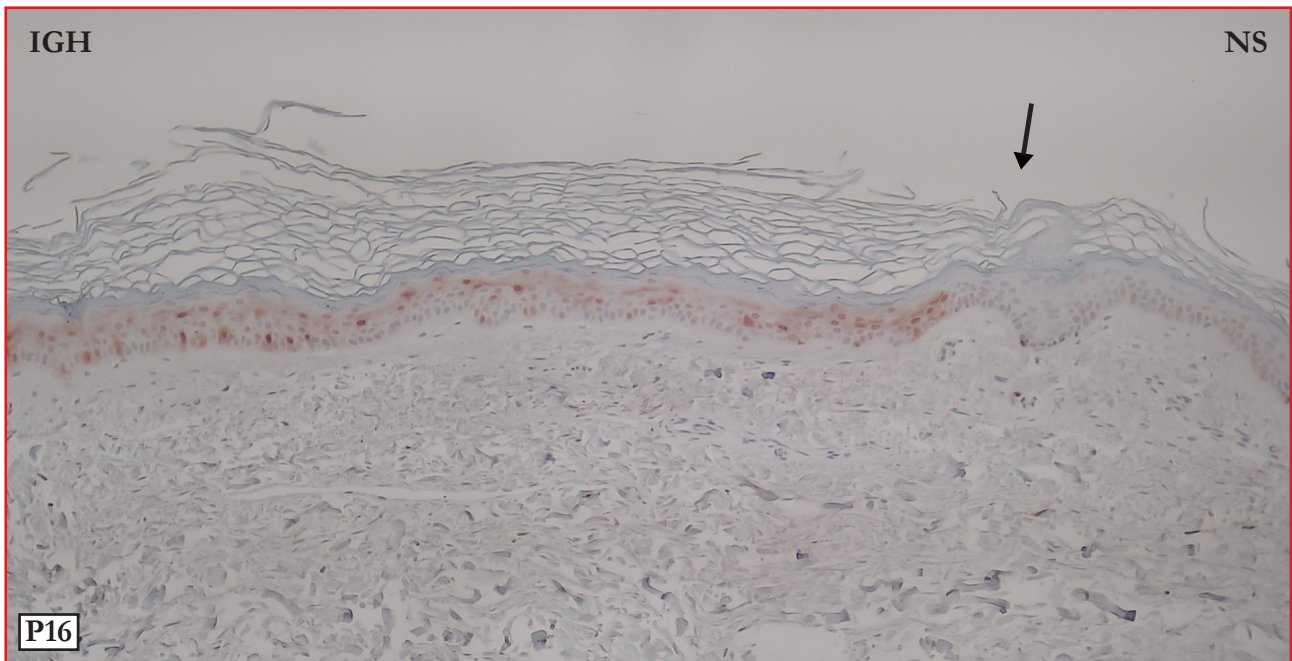
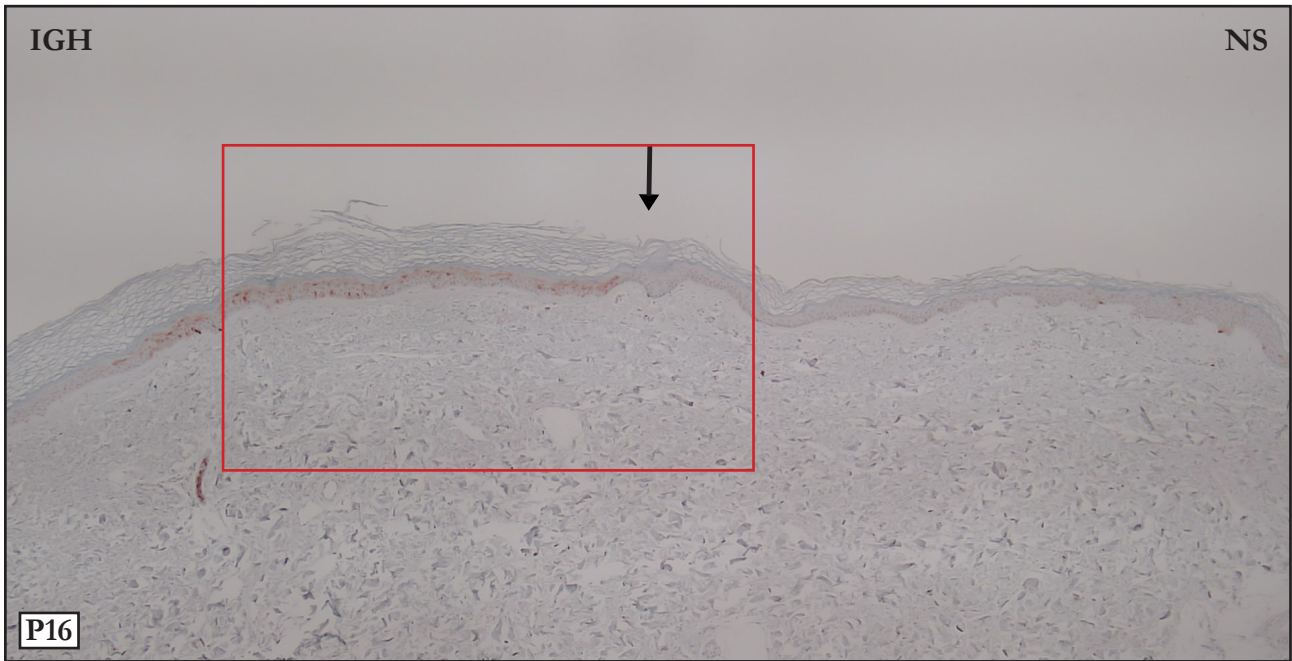
**MELAN A:**



**MELAN:** Panoramic photo. Black arrow points to the IGH/NS limit; the reference is the reduction in the number of melanocytes. Notice the melanocyte limit does not coincide with the hyperkeratosis limit (red arrow). Upper photos. Compare the number of melanocytes in IGH and NS areas.

**MELAN:** Foto panorâmica. Limite IGH/NS assinalado pela seta preta, a referência é a redução numérica dos melanócitos. Observe que o limite dos melanócitos não coincide com o limite do início da hiperqueratose (seta vermelha). Acima. Compare a quantidade de melanócitos nos segmentos IGH e NS.

P16:



**P16:** IGH with positive epidermal cells. NS - Negative

**P16:** IGH células epidérmicas positivas. NS - negativo

**Please contact me in case of disagreements,  
inconsistencies or errors: [samir@dermocentro.com.br](mailto:samir@dermocentro.com.br)**