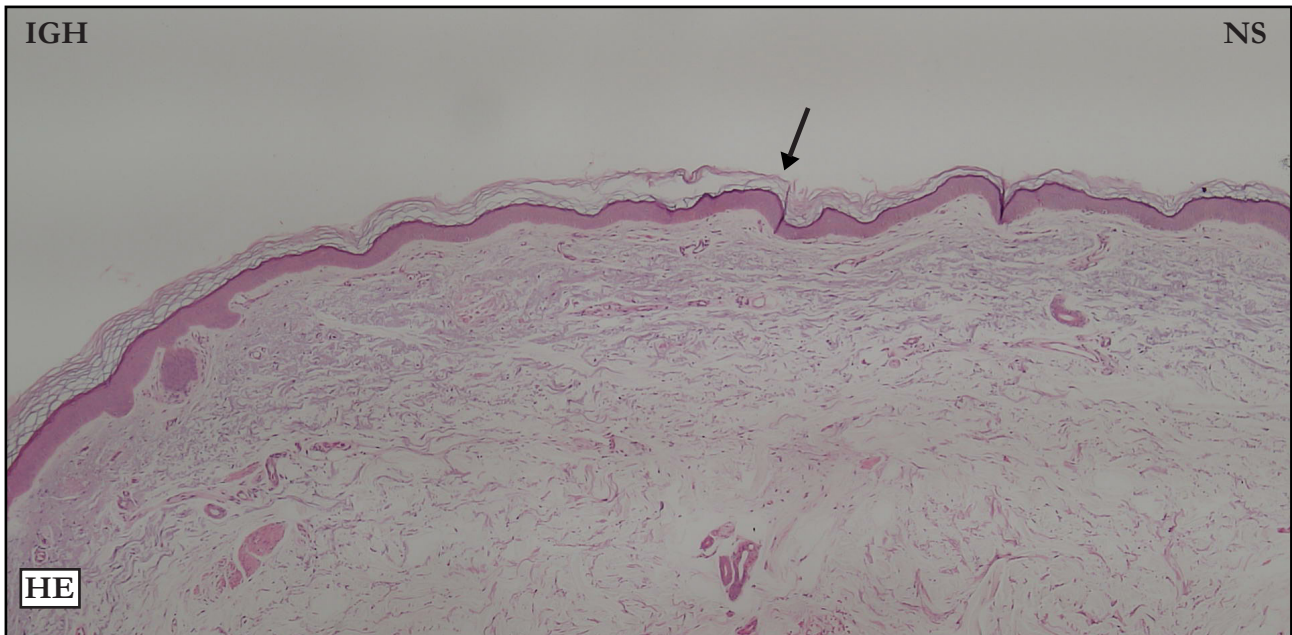


CASE 17

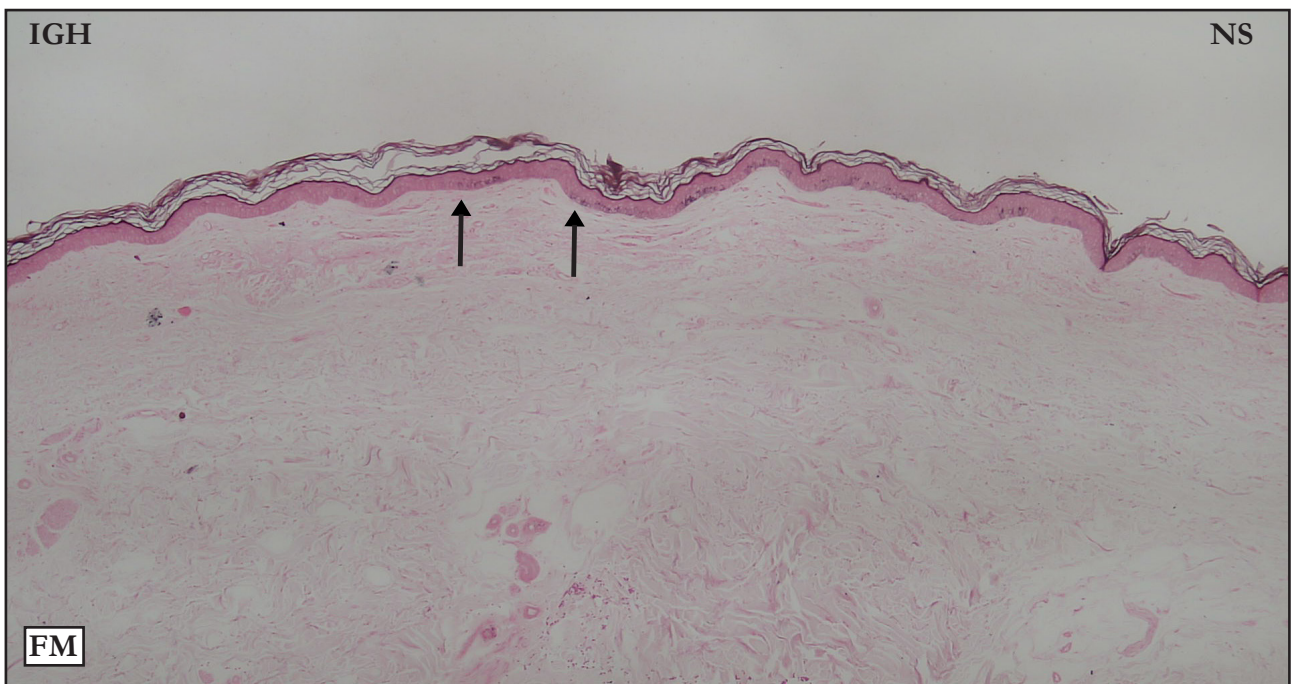
HEMATOXYLIN-EOSIN (HE):

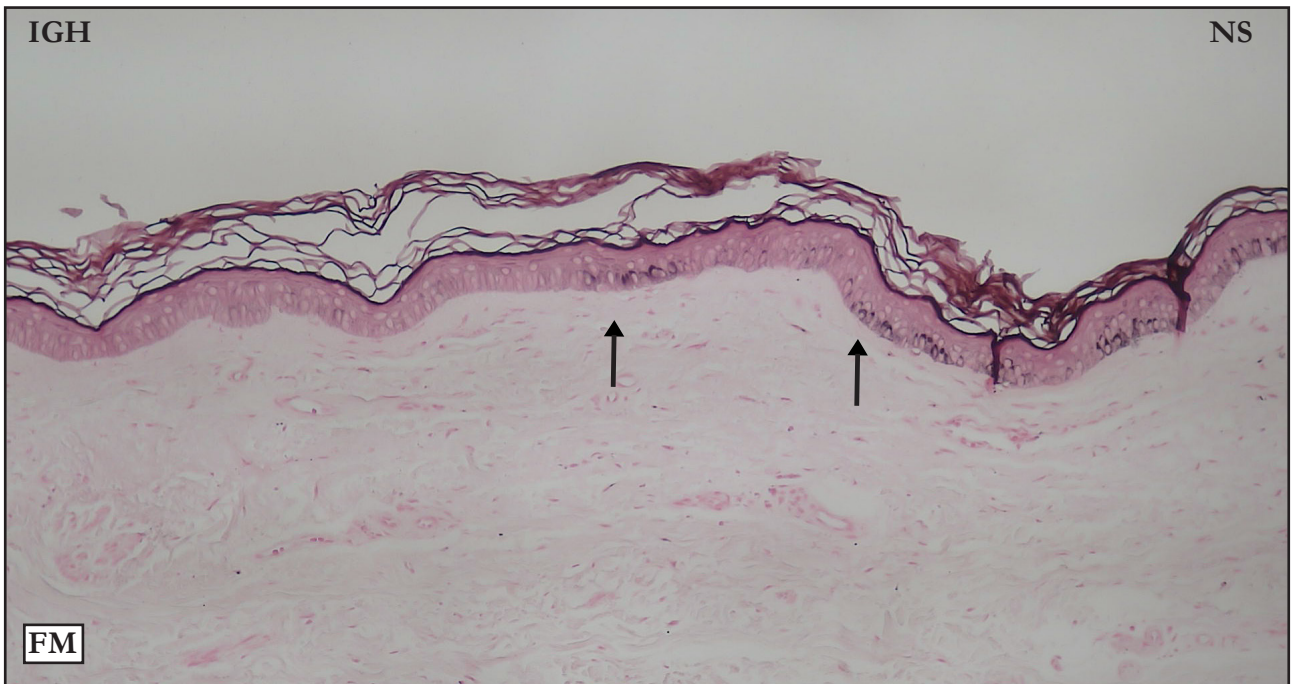


HE: Poorly defined IGH/NS limit (black arrow) because hyperkeratosis is progressive. Slight basket-weave hyperkeratosis. No acanthosis or flattening.

HE: Limite IGH/NS mal definido (seta preta), a referência é o início da hiperqueratose que no caso é progressiva. Discreta hiperqueratose basquet wave. Acanthose ou retificação ausentes.

FONTANA-MASSON (FM):

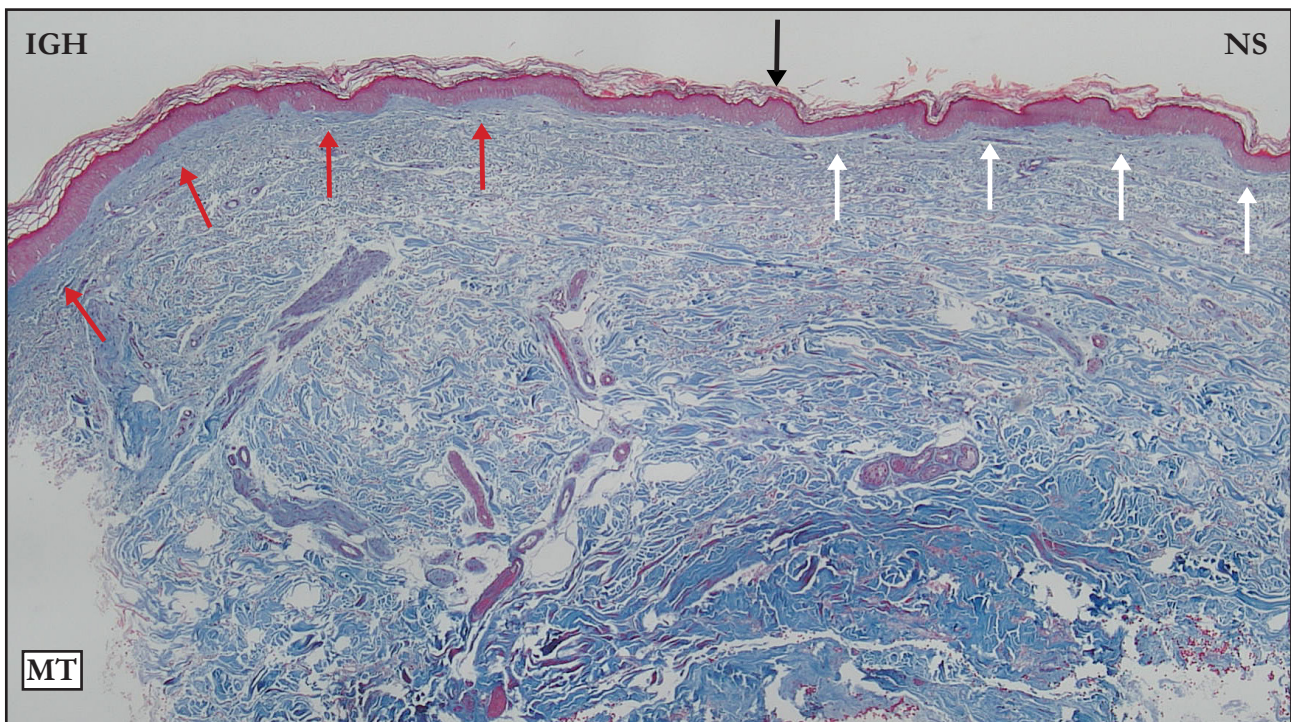




FM: Poorly defined IGH/NS limit (black arrows); the reference is the interruption of basal layer melanin. Diffuse pigmentation in IGH basal layer.

FM: Limite IGH/NS mal definido (setas pretas), a referência é a interrupção da pigmentação melânica da camada basal. Pigmentação difusa da camada basal da IGH.

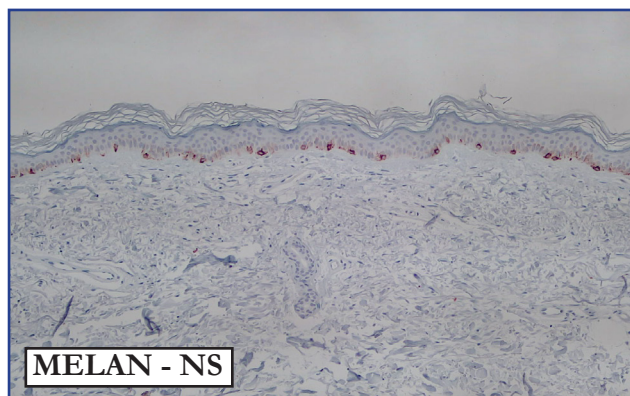
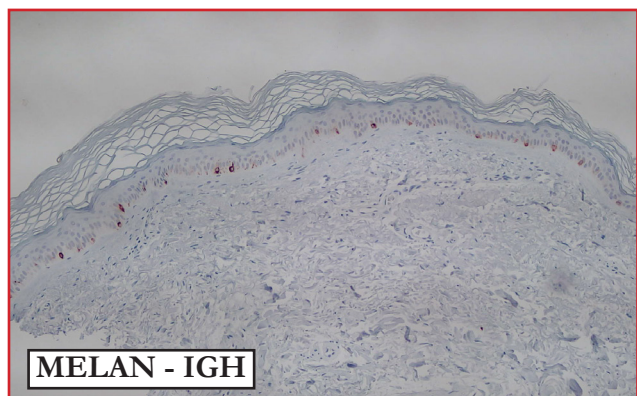
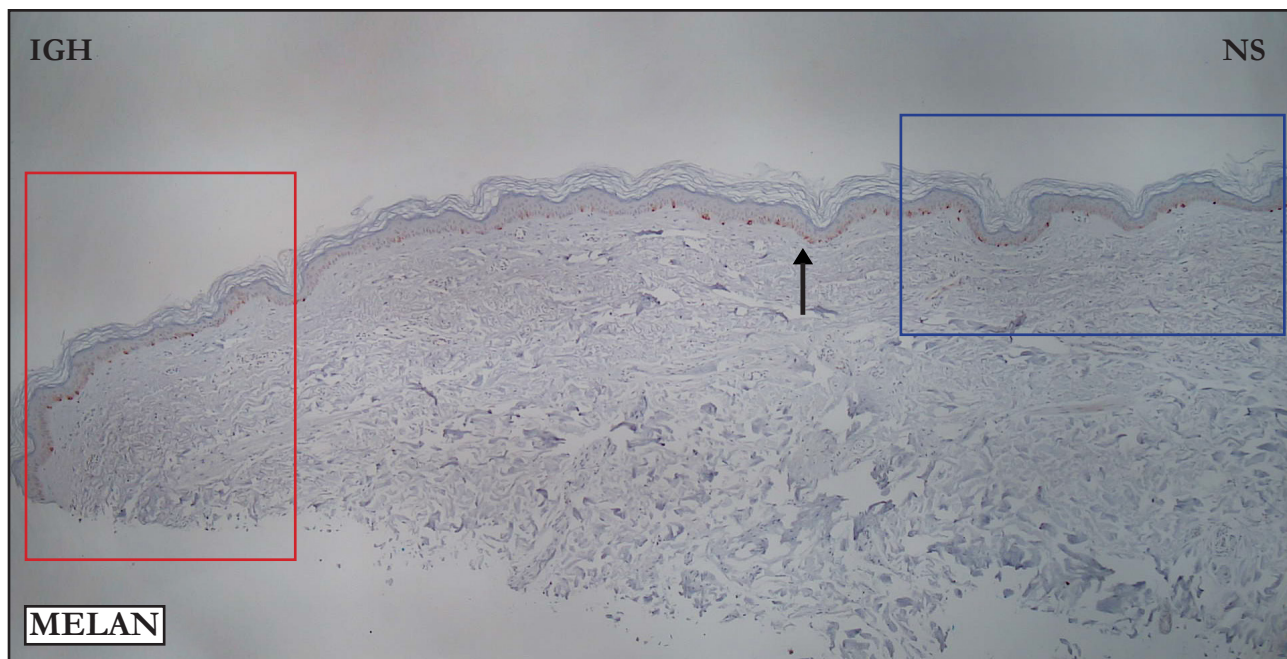
MASSON'S TRICHRROME (MT):



MT: Differences are visible in low magnification. Compare stain intensity and compacted superficial dermis in IGH area (red arrows) with NS superficial dermis (white arrows).

MT: Em menor aumento, já podemos observar as diferenças. Compare a intensidade da coloração e a compactação da derme superficial da IGH (setas vermelhas) com a derme superficial da NS (setas brancas).

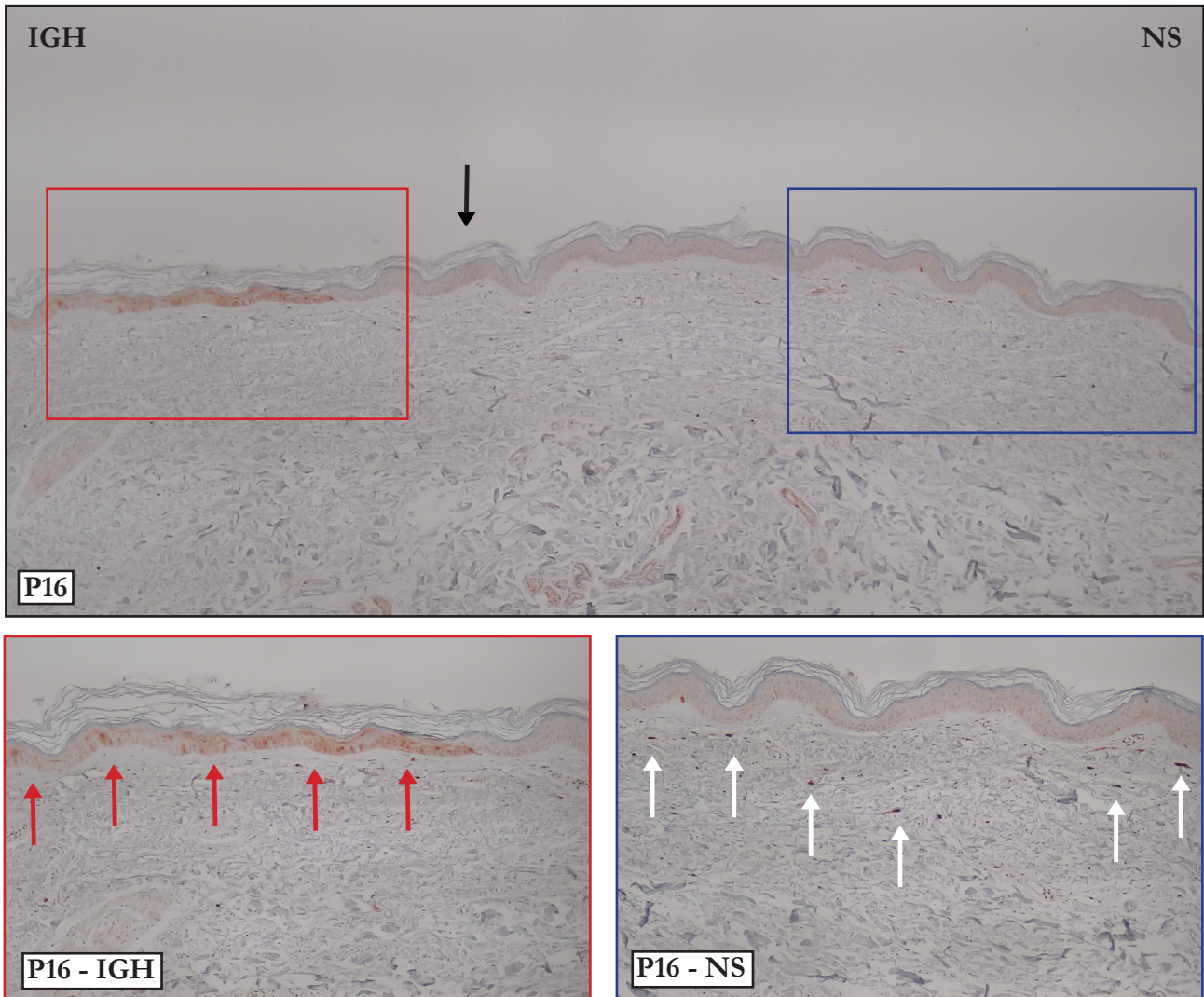
MELAN A:



MELAN: Panoramic photo. Yellow arrow points to the IGH/NS limit; the reference is the reduction in the number of melanocytes. Upper photos. Compare the number of melanocytes in IGH and NS areas.

MELAN: Foto panorâmica. Limite IGH/NS assinalado pela seta amarela, a referência é a redução numérica dos melanócitos. Acima. Compare a quantidade de melanócitos nas áreas IGH e NS.

P16:



P16: IGH: Positive P16 epidermal cells and fibroblasts (red arrows). NS – Positive P16 dermal fibroblasts (white arrows)

P16: IGH: P16 positivo em células epidérmicas e fibrobrastos dérmicos (setas vermelhas). NS – P16: positivo em fibroblastos dérmicos (setas brancas)

Please contact me in case of disagreements,
inconsistencies or errors: samir@dermocentro.com.br