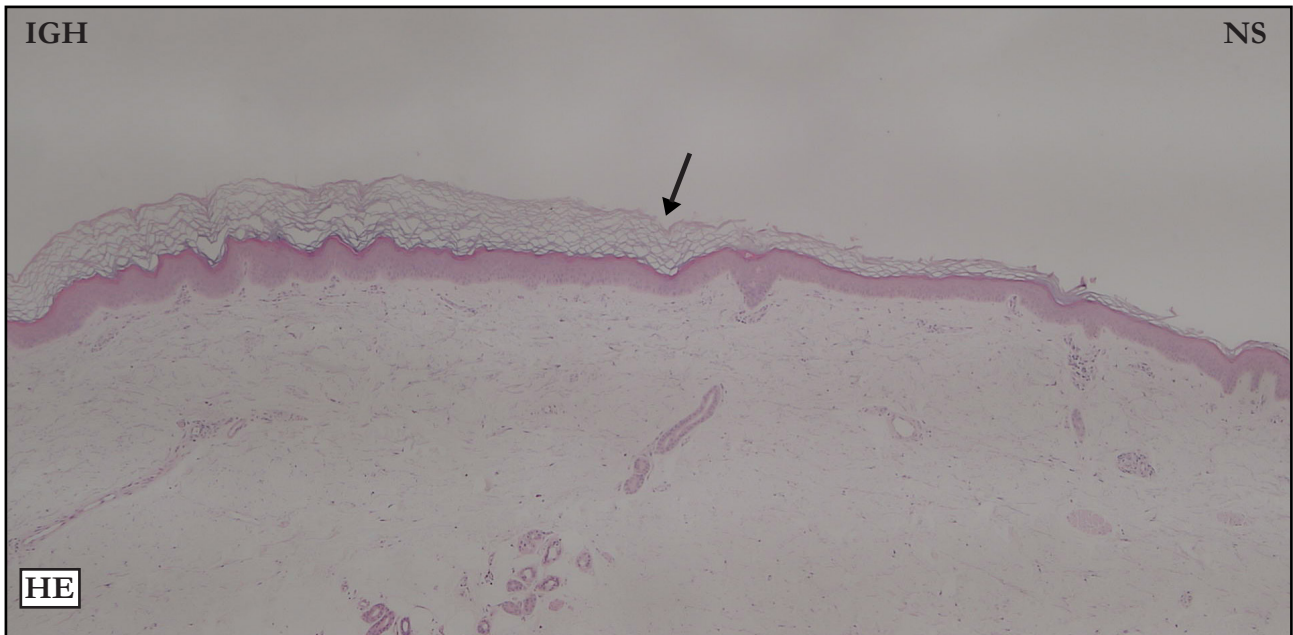


CASE 19

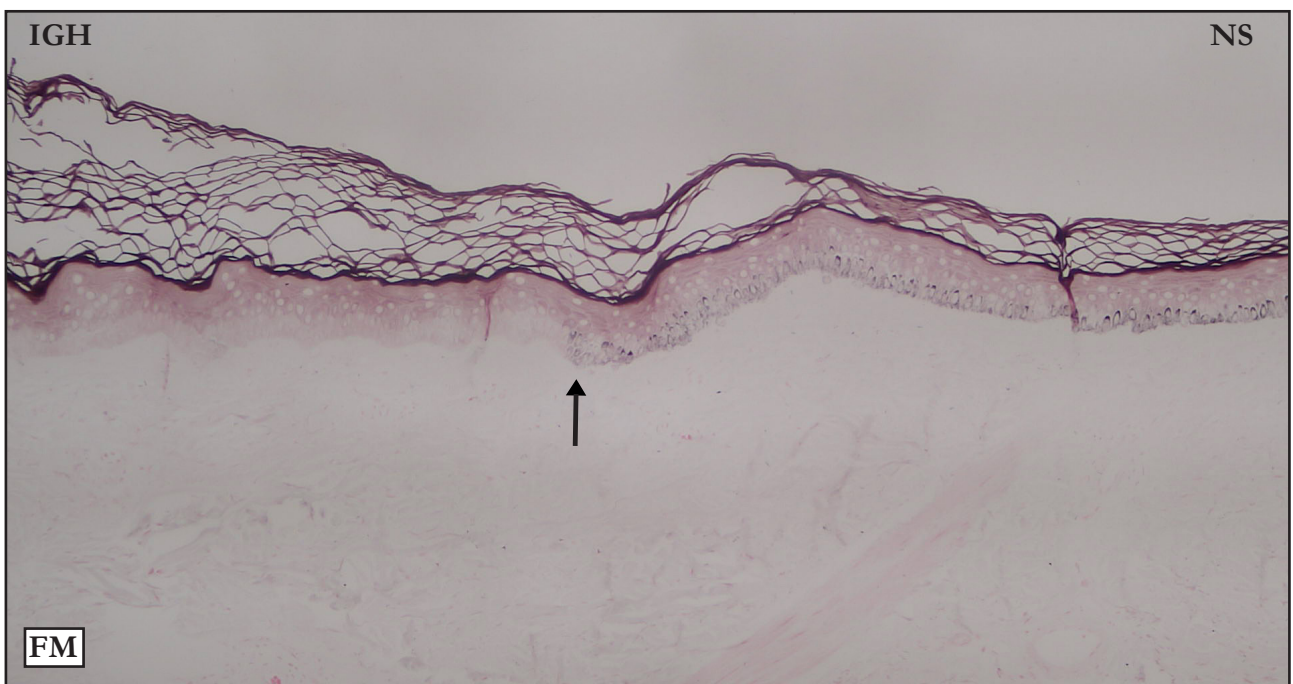
HEMATOXYLIN-EOSIN (HE):

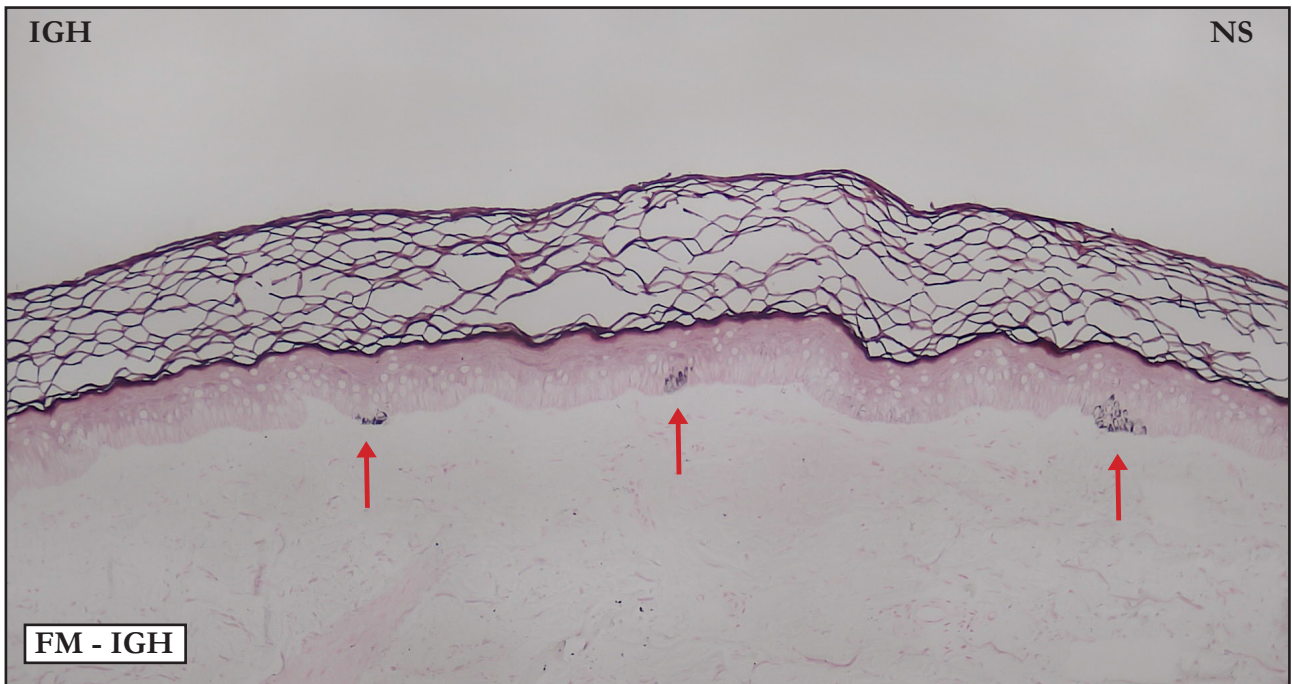


HE: Poorly defined IGH/NS limit (black arrow) because hyperkeratosis is progressive. Intense basket-weave hyperkeratosis. Moderate acanthosis. Slight hypergranulosis and flattening.

HE: Limite IGH/NS mal definido (seta preta), porque a hiperqueratose é progressiva. Intensa hiperqueratose basquet wave. Acanthose moderada. Discretas hipergranulose e retificação.

FONTANA-MASSON (FM):

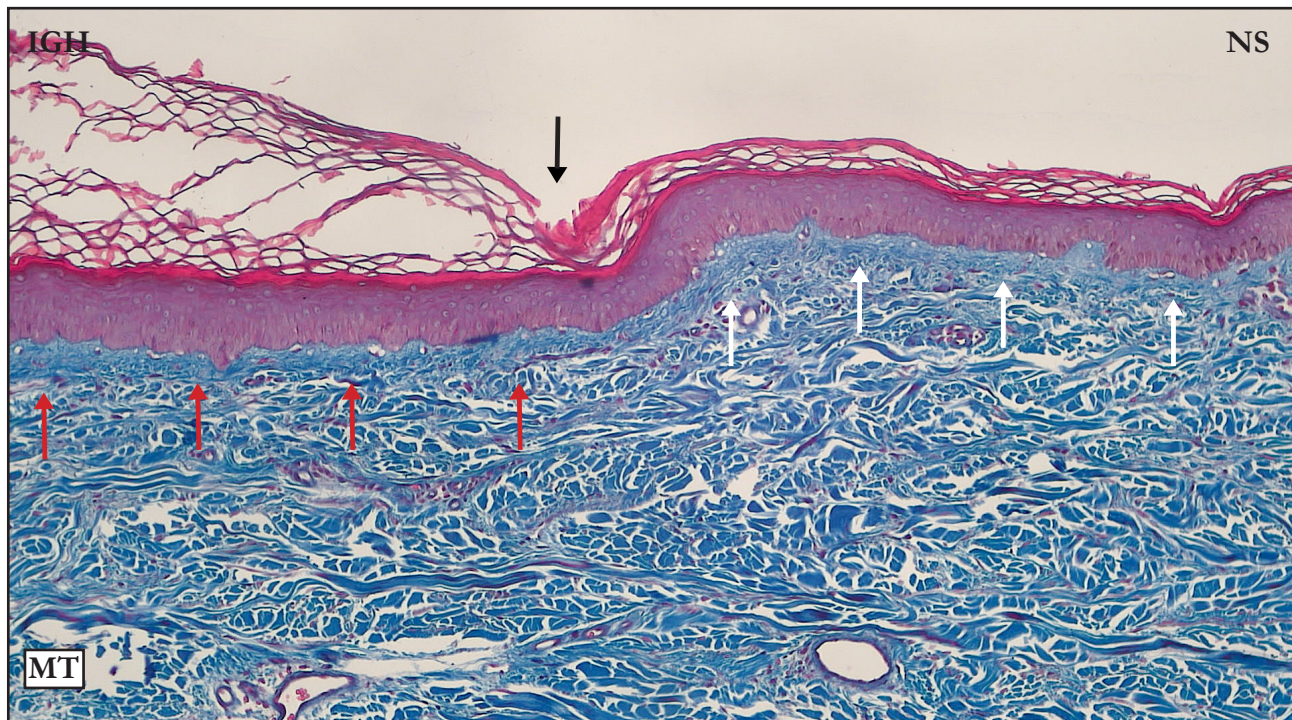




FM: Well defined IGH/NS limit (black arrow); the reference is the interruption of basal layer melanin. . Focal pigmentation (red arrows) in IGH area.

FM: Limite IGH/NS bem definido (seta preta), a referência é a interrupção da pigmentação melânica da camada basal. Pigmentação focal (setas vermelhas) no segmento IGH.

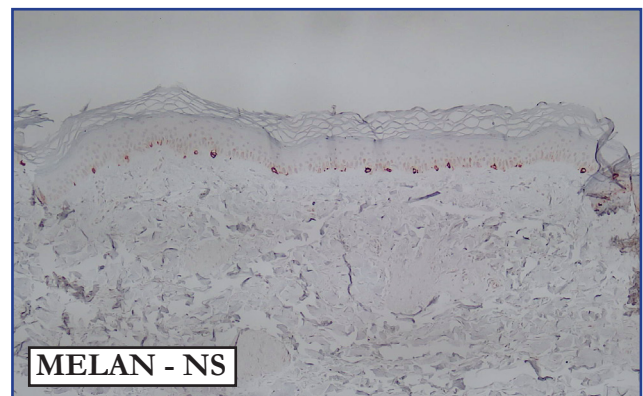
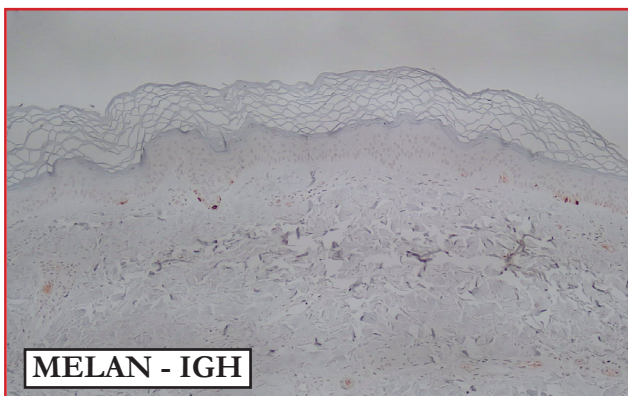
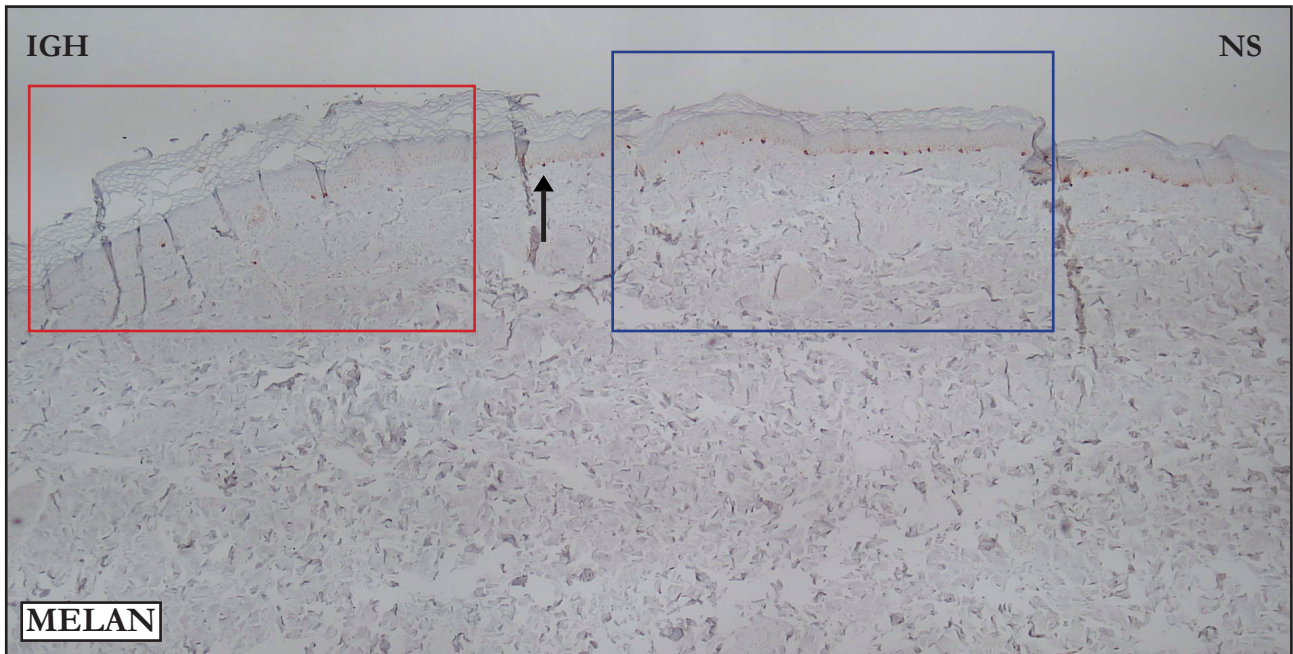
MASSON'S TRICHRROME (MT):



MT: Well defined IGH/NS limit (black arrow); the reference is where hyperkeratosis starts. Compare stain intensity and compacted superficial dermis in IGH area (red arrows) with NS superficial dermis (white arrows).

MT: Limite IGH/NS bem definido (seta preta), a referência é o início da hiperqueratose. Compare a intensidade da coloração e a compactação da derme superficial da IGH (setas vermelhas) com a derme superficial da NS (setas brancas).

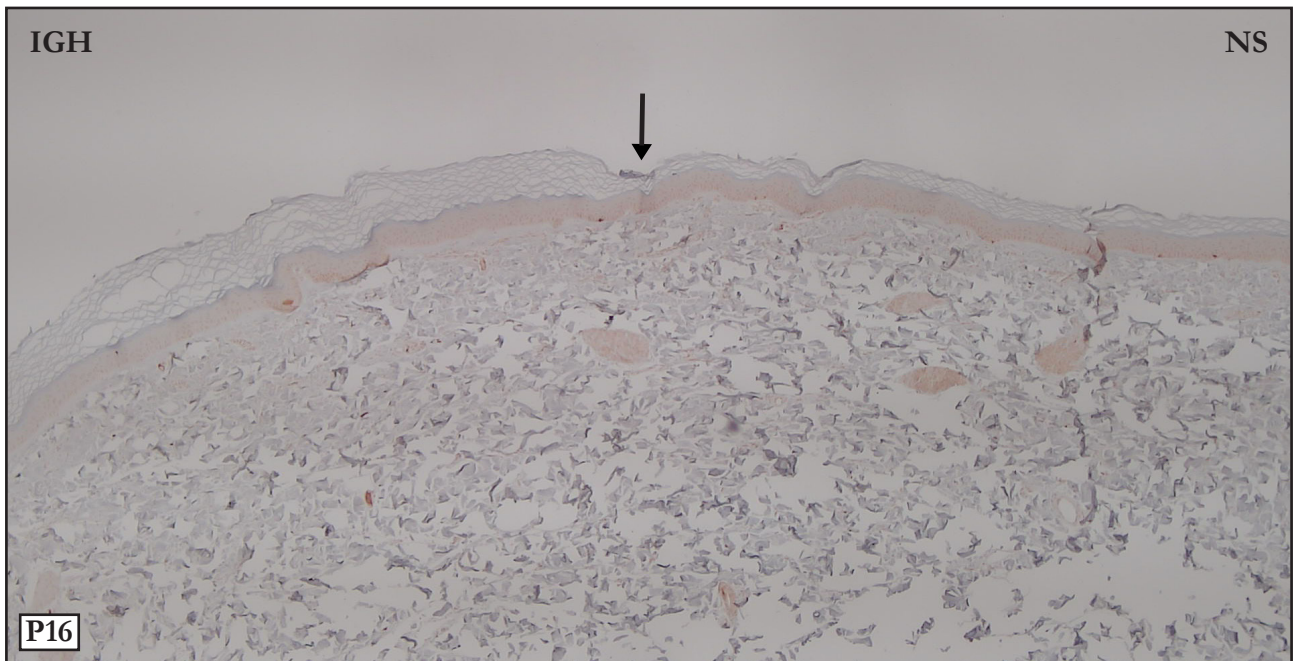
MELAN A:



MELAN: pper Panoramic photo. Black arrow points to the IGH/NS limit; the reference is the reduction in the number of melanocytes. Lower microphotographs. Compare the number of melanocytes in IGH and NS areas.

MELAN: Acima - Foto panorâmica. Limite IGH/NS assinalado pela seta preta, referência é a redução numérica dos melanócitos. Microfotografias abaixo. Compare a quantidade de melanócitos nos segmentos IGH e NS.

P16:



P16: Panoramic photo – Well defined IGH/NS limit (black arrow). Few P16 positive epidermal cells in IGH/NS áreas.

P16: Foto panorâmica – Limite IGH/NS bem definido (seta preta). Poucas cels P16 positivas epidérmicas nos segmentos IGH/NS

**Please contact me in case of disagreements,
inconsistencies or errors: samir@dermocentro.com.br**