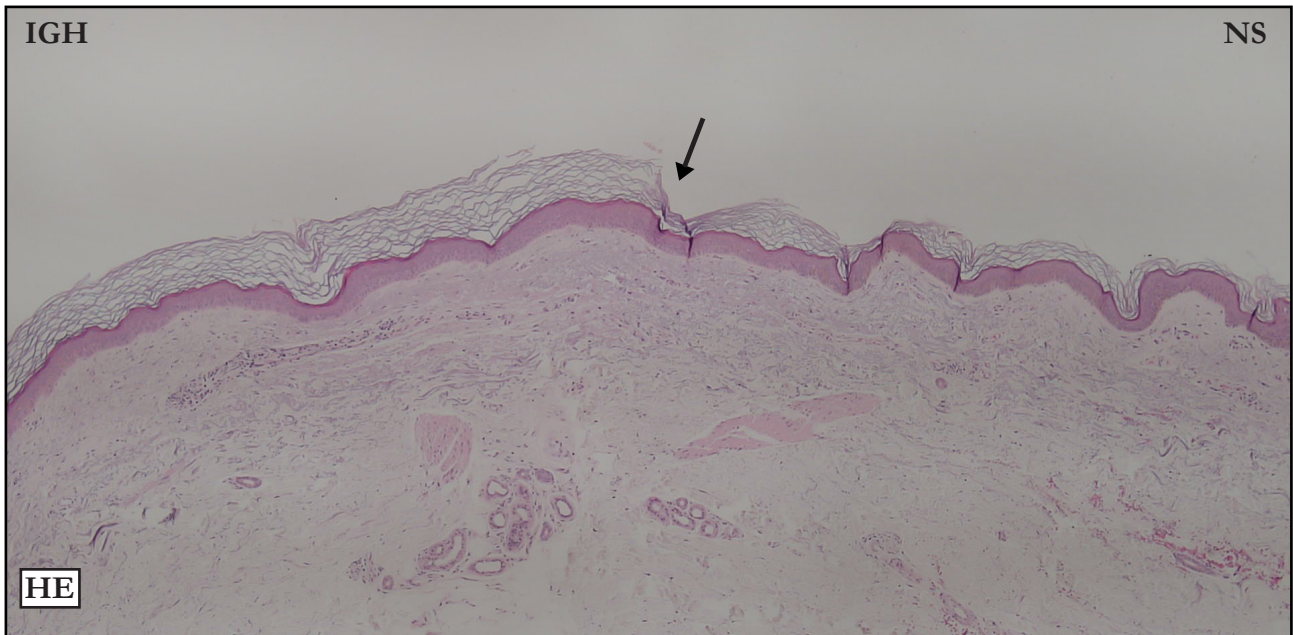


## CASE 20

### HEMATOXYLIN-EOSIN (HE):



**HE:** Well defined IGH/NS limit (black arrow); the reference is where hyperkeratosis starts. Moderate basket-weave hyperkeratosis. No acanthosis. Slight flattening.

**HE:** Limite IGH/NS bem definido (seta preta), a referência é o início da hiperqueratose. Moderada hiperqueratose basquet wave. Ausência de acantose. Discreta retificação.

### FONTANA-MASSON (FM):



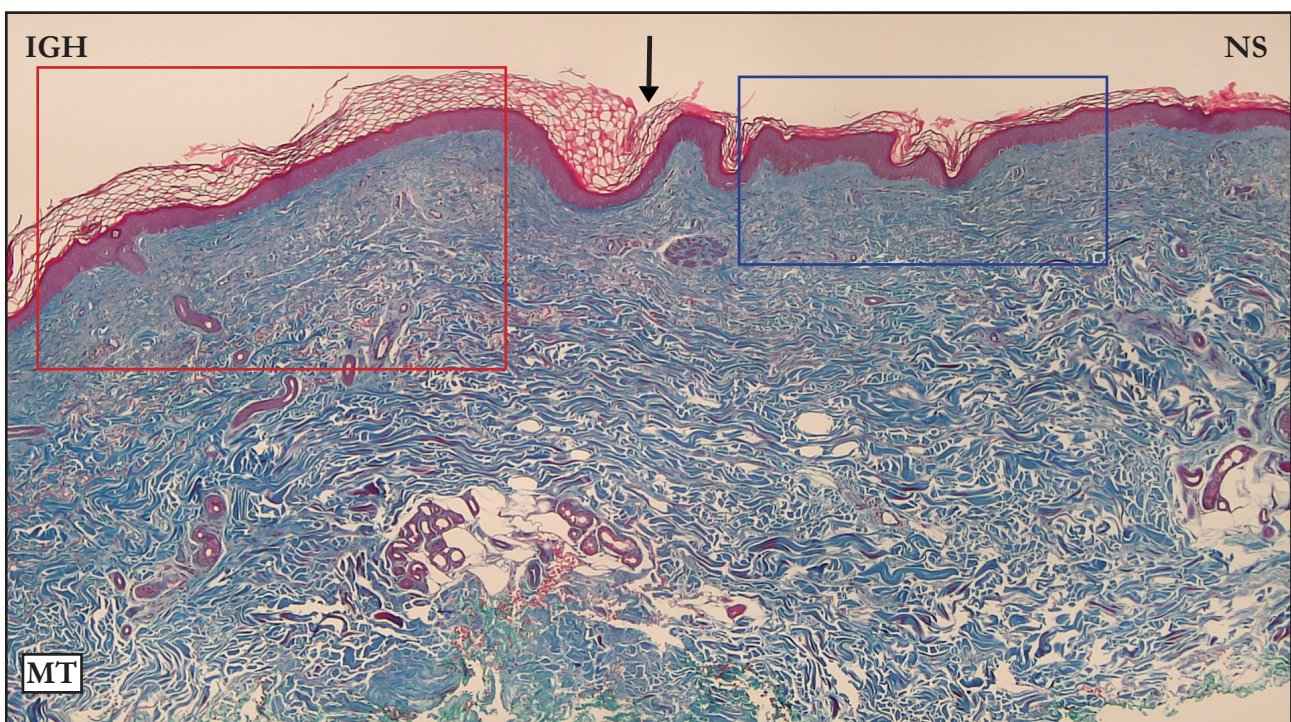




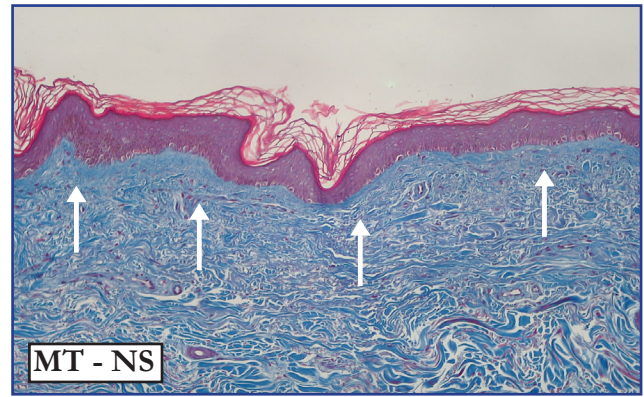
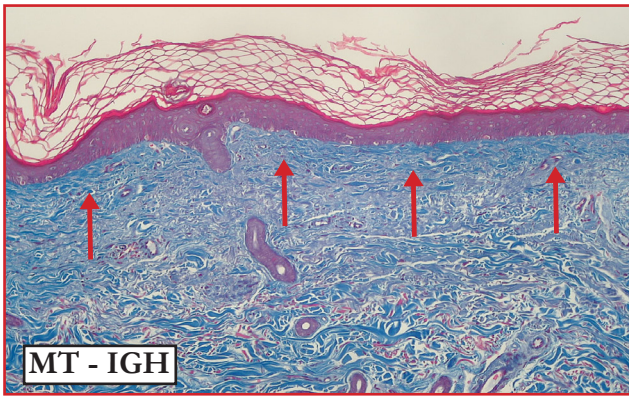
**FM:** Well defined IGH/NS limit (black arrow); the reference is the interruption of basal layer melanin. Focal basal layer pigmentation (red arrows).

**FM:** Limite IGH/NS bem definido (seta preta), a referência é a interrupção da pigmentação melânica da camada basal. Pigmentação focal na camada basal (setas vermelhas).

**MASSON'S TRICHRROME (MT):**



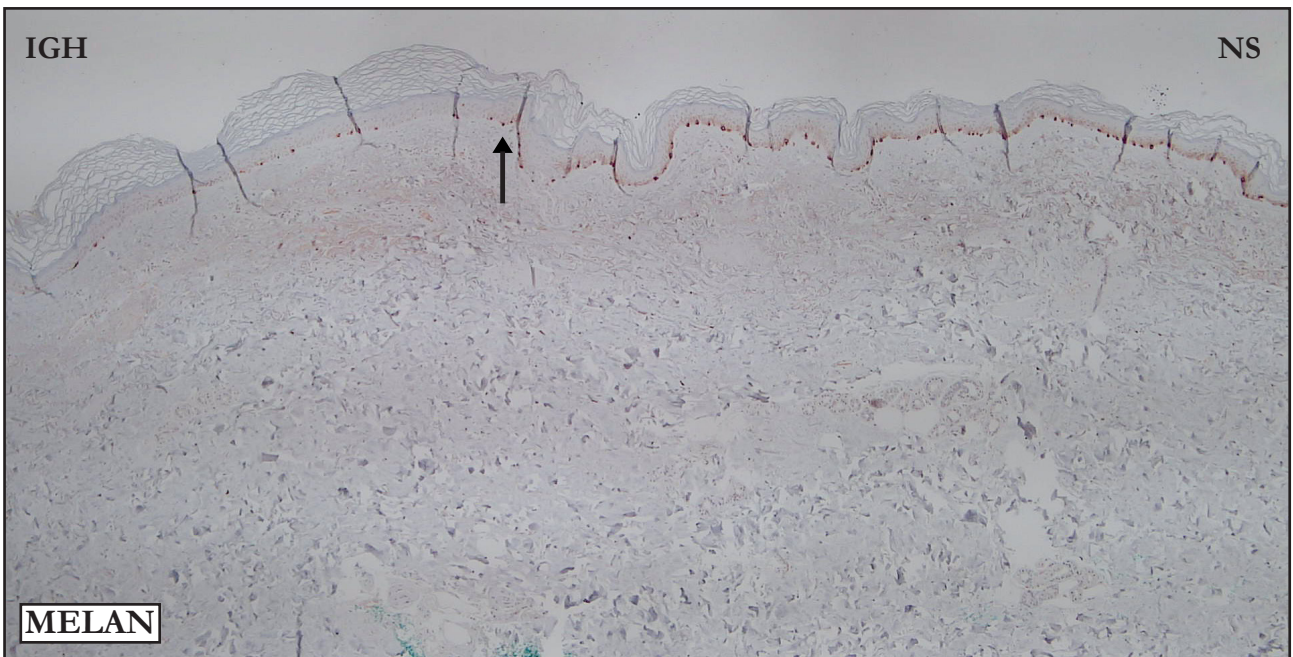


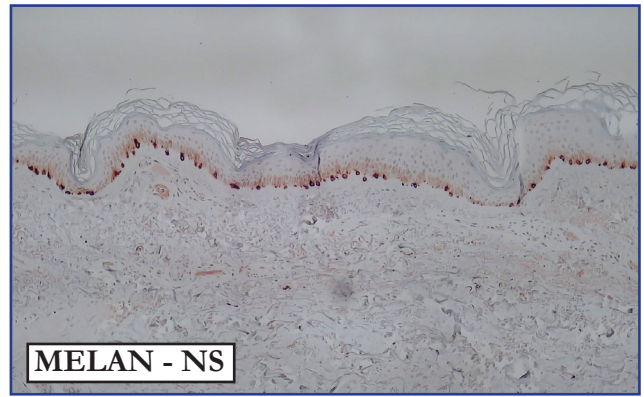
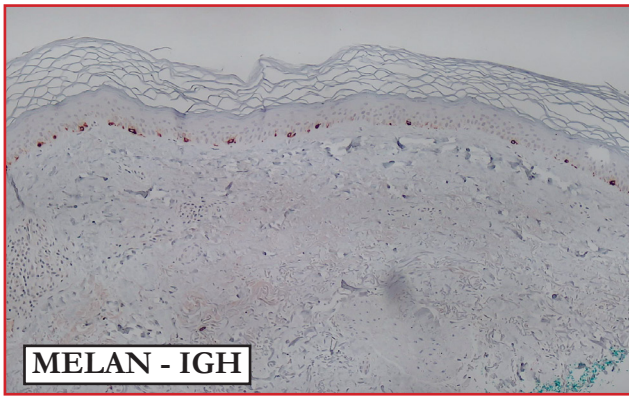


**MT:** Well defined IGH/NS limit (black arrow); the reference is where hyperkeratosis starts. Compare stain intensity and compacted superficial dermis in IGH area (red arrows) with NS superficial dermis (white arrows).

**MT:** Limite IGH/NS bem definido (seta preta), a referência é o início da hiperqueratose. Compare a intensidade da coloração e a compactação da derme superficial da IGH (setas vermelhas) com a derme superficial da NS (setas brancas).

**MELAN A:**

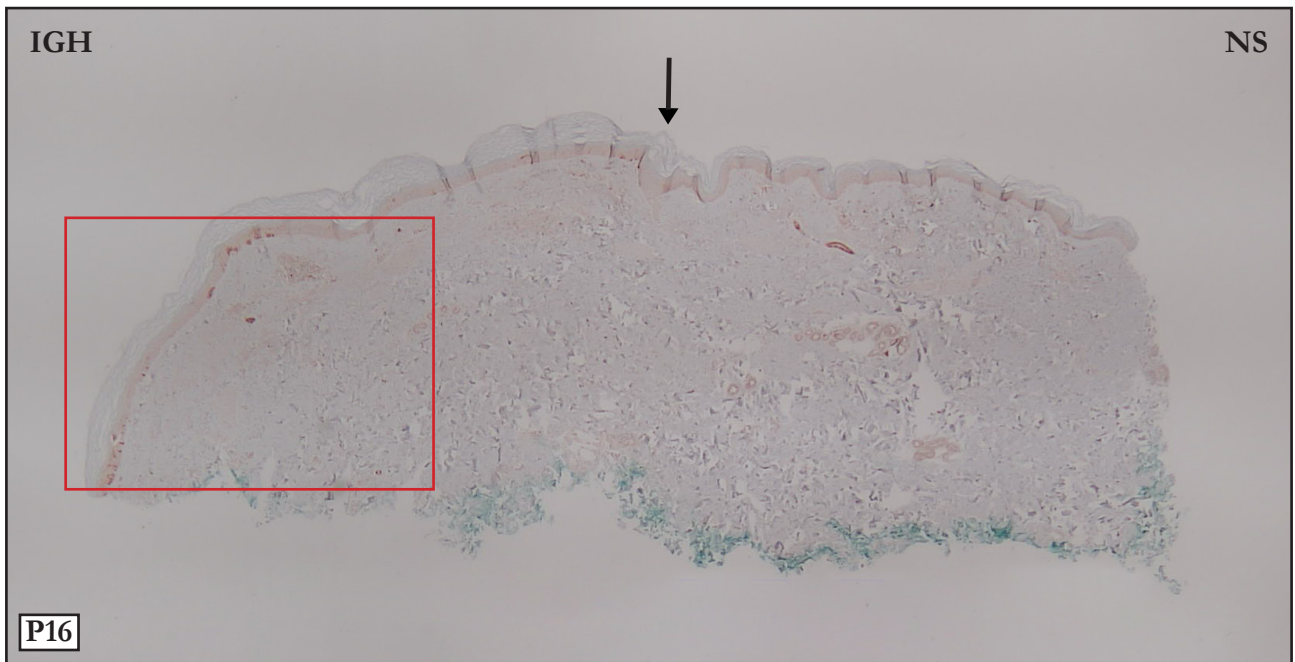




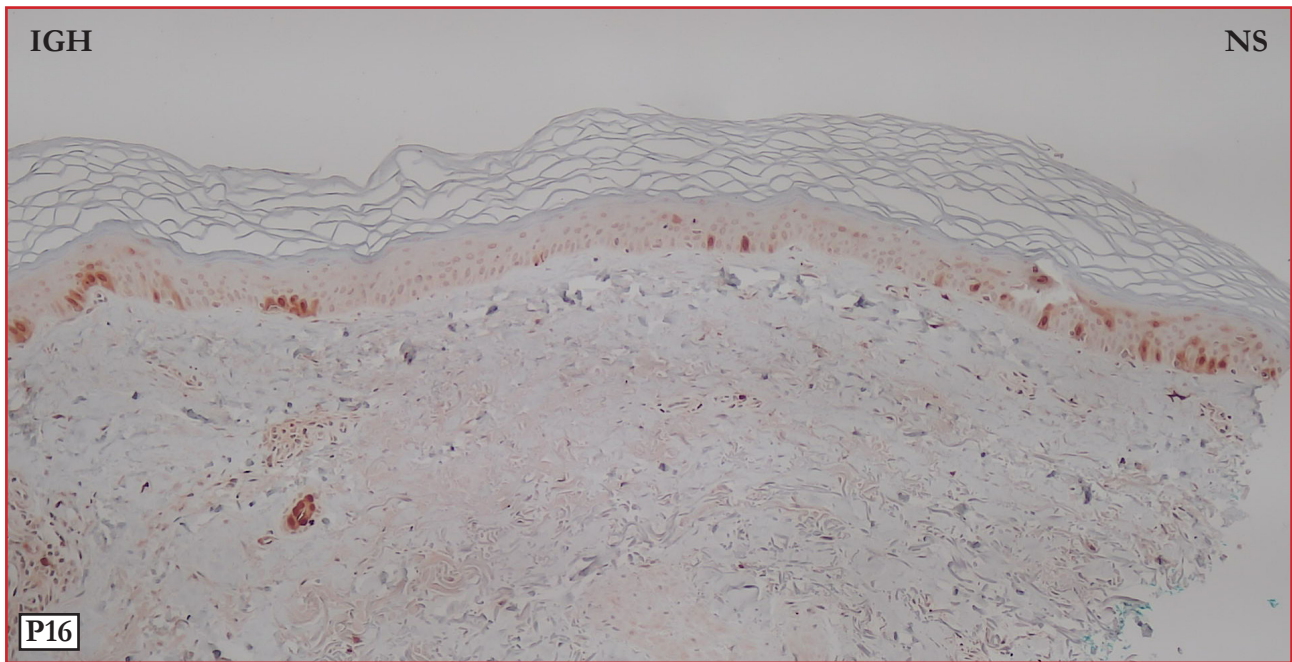
**MELAN:** Panoramic photo. Black arrow points to the IGH/NS limit; the reference is the reduction in the number of melanocytes. Upper microphotographs. Compare the number of melanocytes in IGH and NS areas.

**MELAN:** Foto panorâmica. Limite IGH/NS assinalado pela seta preta, a referência é a redução numérica dos melanócitos. Microfotografias acima. Compare a quantidade de melanócitos nos segmentos IGH e NS.

**P16:**







**P16:** Well defined IGH/NS limit (black arrow); the reference is where hyperkeratosis starts.

Red rectangle - IGH area with p16 cells in epidermis.

**P16:** Limite IGH/NS bem definido (seta preta), a referência é o início da hiperqueratose.

Retângulo vermelho - Área da IGH com cels p16.

**Please contact me in case of disagreements,  
inconsistencies or errors: [samir@dermocentro.com.br](mailto:samir@dermocentro.com.br)**