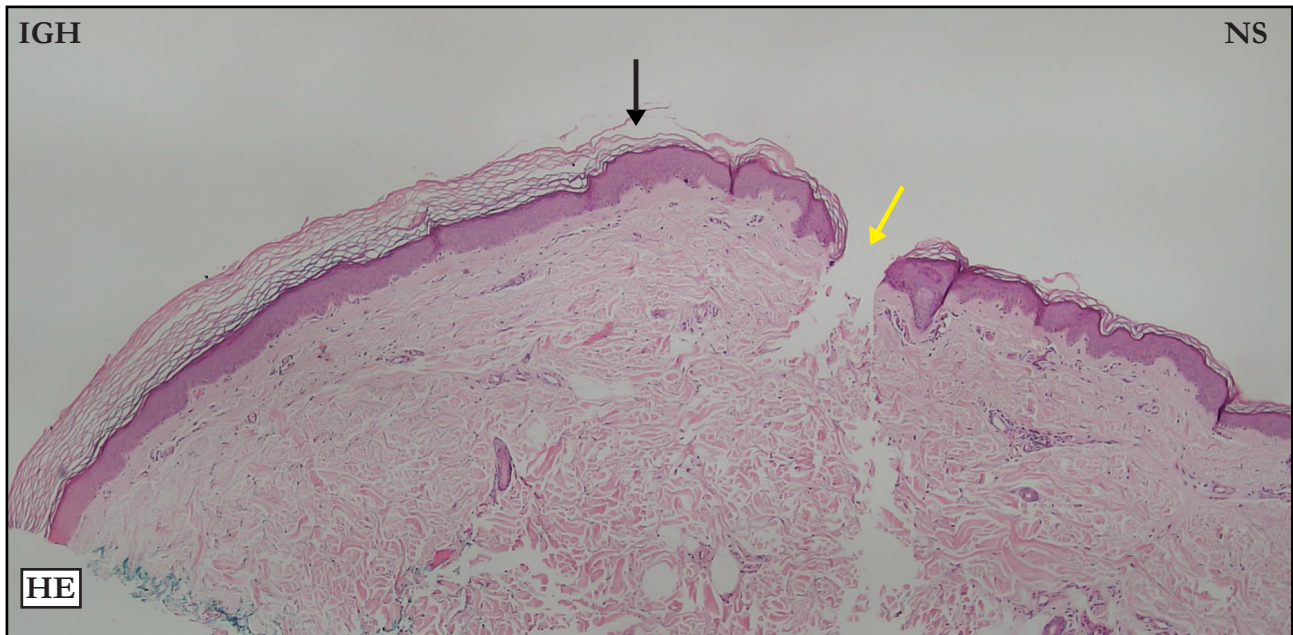


CASE 03

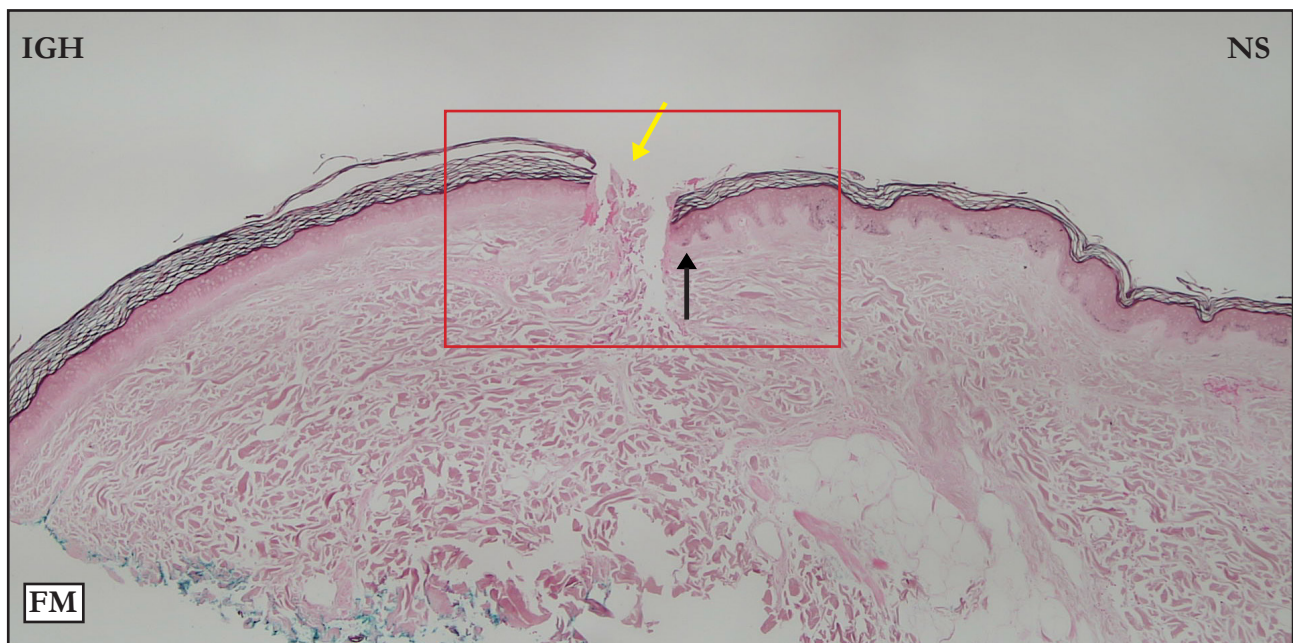
HEMATOXYLIN-EOSIN (HE):

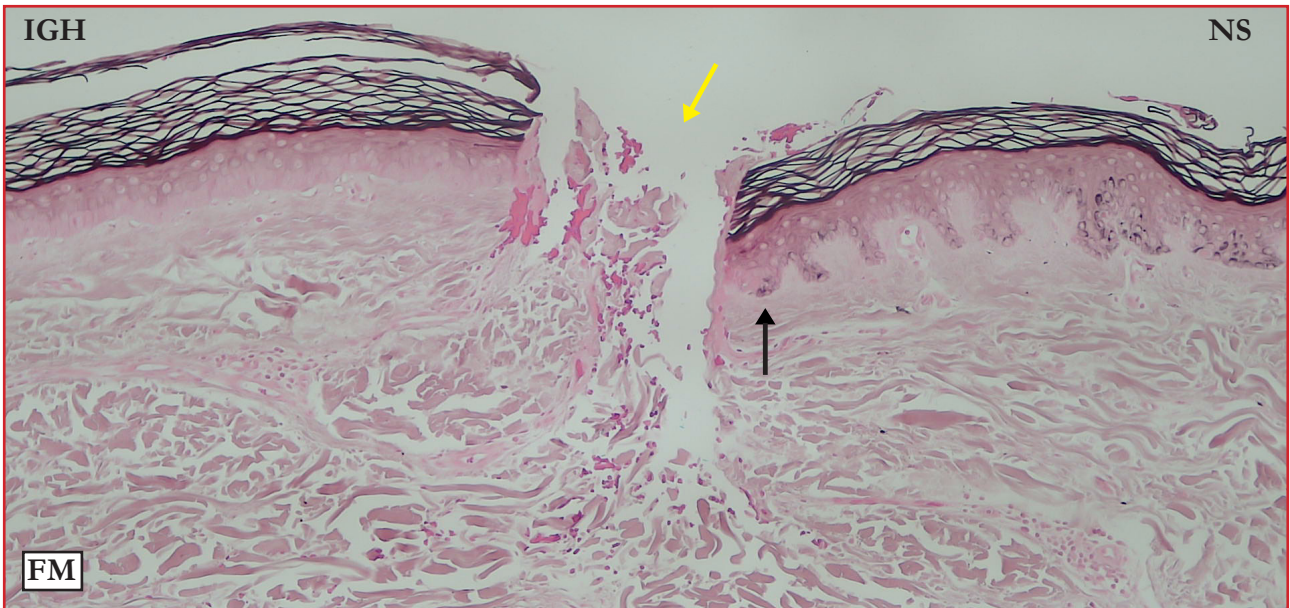


HE: Well defined IGH/NS limit (black arrow); the reference is where hyperkeratosis starts. Moderate basket-weave hyperkeratosis. Slight acanthosis and hypergranulosis. Moderate flattening. Yellow arrow - indicates where incision was done after the biopsy to show the IGH/NS limit.

HE: Limite IGH/NS bem definido (seta preta), a referência é o início da hiperqueratose. Moderada hiperqueratose basquet wave. Discretas acantose e hipergranulose. Moderada retificação. Seta amarela - indica a incisão cirúrgica realizada após a biópsia para delimitar IGH/NS.

FONTANA-MASSON (FM):





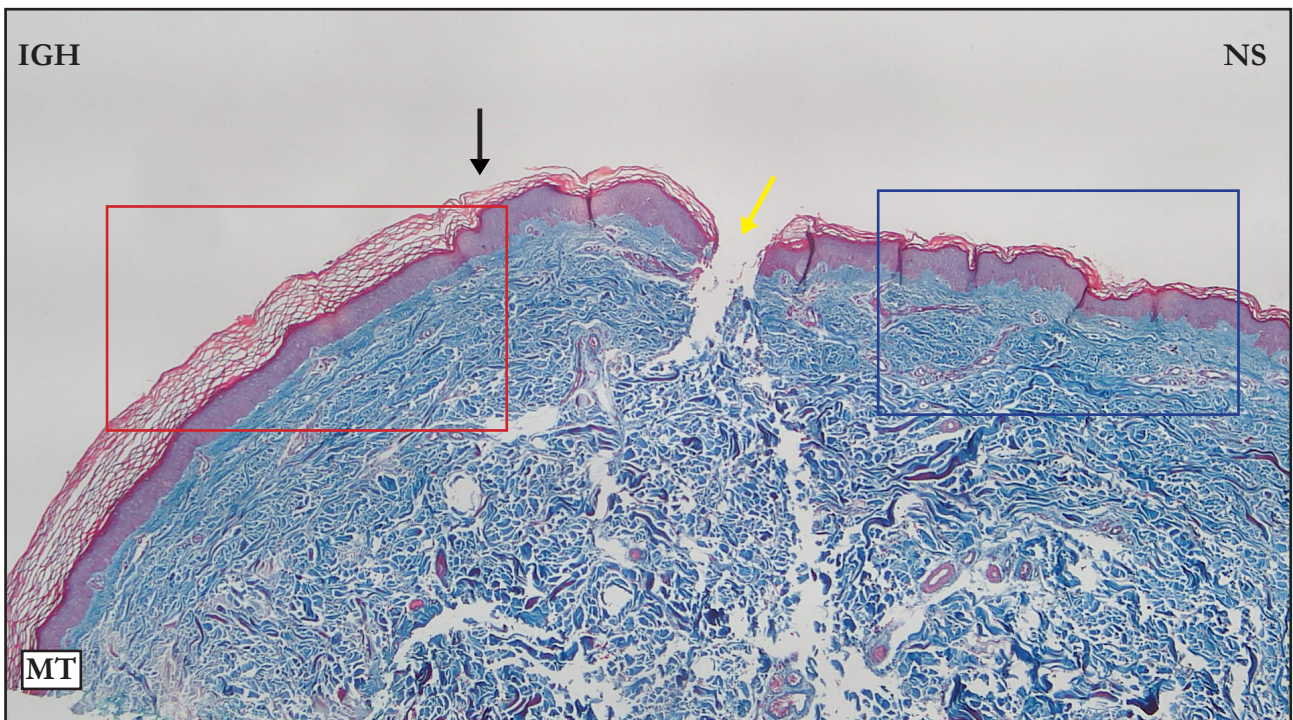
FM: Well defined IGH/NS limit (black arrows); the reference is the interruption of basal layer melanin. Notice abrupt epidermal flattening in IGH area.

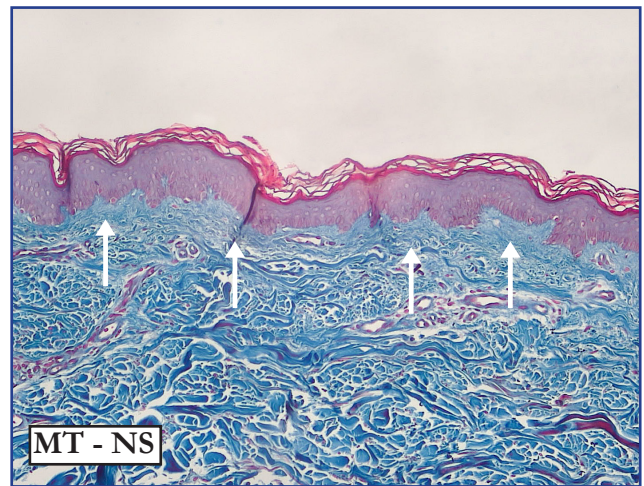
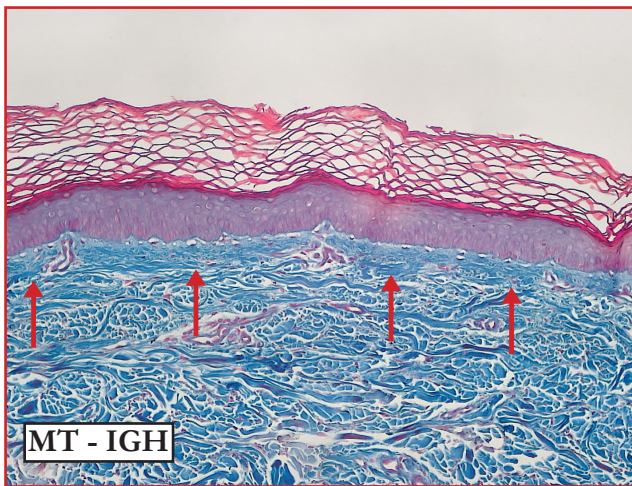
Yellow arrow indicates where incision was done after the biopsy to show the IGH/NS limit.

FM: Limite IGH/NS bem definido (setas pretas), a referência é a interrupção da pigmentação melânica da camada basal. Observe a abrupta retificação da epiderme na IGH.

Seta amarela - indica a incisão cirúrgica realizada após a biópsia para delimitar IGH/NS.

MASSON'S TRICHRROME (MT):





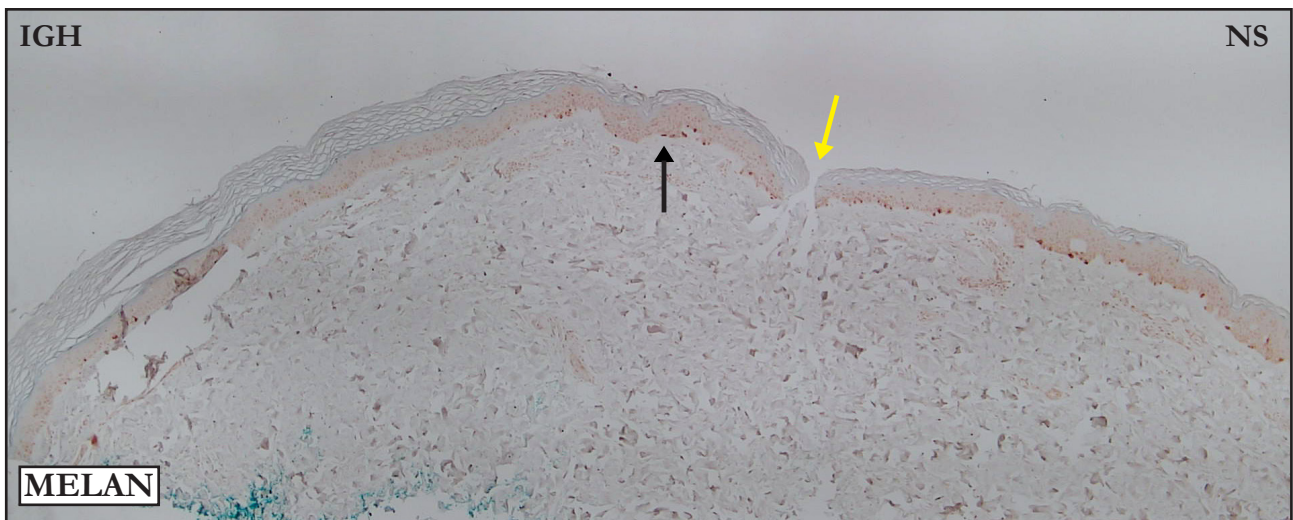
MT: Well defined IGH/NS limit (black arrow); the reference is where hyperkeratosis starts. In low and high magnifications, compare stain intensity and compacted superficial dermis in IGH area (red arrows) with NS superficial dermis (white arrows).

Yellow arrow - indicates where incision was done after the biopsy to show the IGH/NS limit.

MT: Limite IGH/NS bem definido (seta preta), tomando-se como referência o início da hiperqueratose. No menor e nos maiores aumentos, compare a intensidade da coloração e a compactação da derme superficial da IGH (setas vermelhas) com a derme superficial da NS (setas brancas).

Seta amarela - indica a incisão cirúrgica realizada após a biópsia para delimitar IGH/NS.

MELAN A:



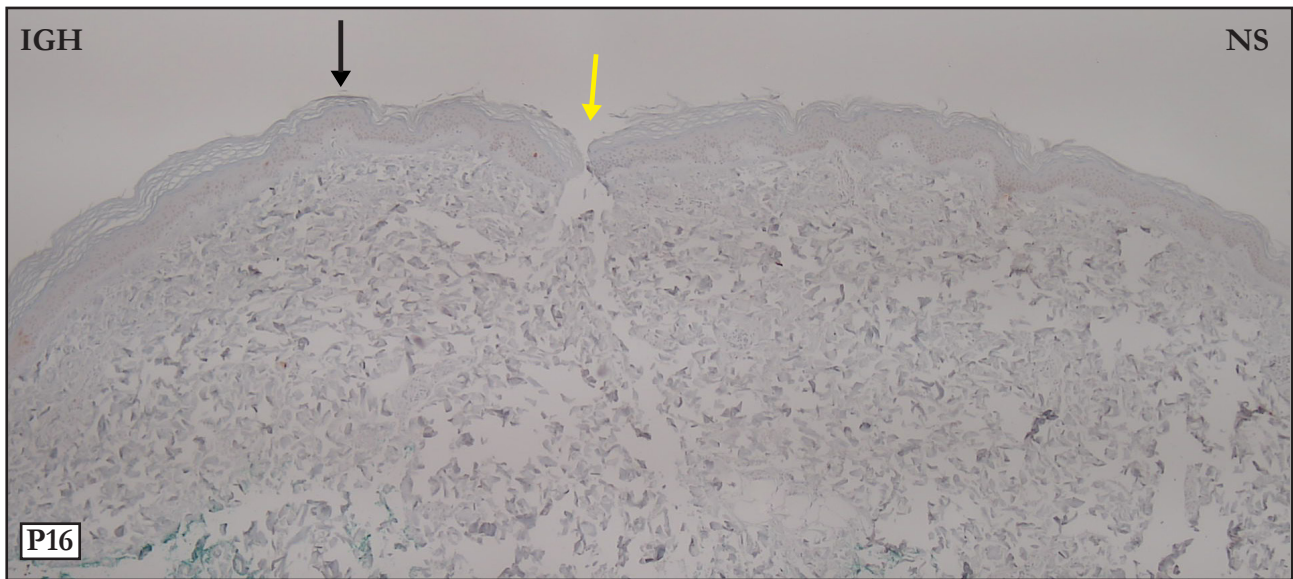
MELAN: Panoramic photo. Blue arrow points to the IGH/NS limit; the reference is the reduction in the number of melanocytes. Notice smaller number of melanocytes in the IGH area and higher number in NS

Yellow arrow - indicates where incision was done after the biopsy to show the IGH/NS limit.

MELAN: Foto panorâmica. Limite IGH/NS assinalado pela seta azul, a referência é a redução numérica dos melanócitos. Compare a quantidade de melanócitos nos segmentos IGH/NS, nitidamente mais numerosos na NS.

Seta amarela - indica a incisão cirúrgica realizada após a biópsia para delimitar IGH/NS .

P16:



P16: Absence of P16 positive cells in IGH/NS.

Yellow arrow - indicates where incision was done after the biopsy to show the IGH/NS limit.

P16: Ausência de células P16 positivas nos segmentos IGH/NS.

Seta amarela - indica a incisão cirúrgica realizada após a biópsia para delimitar IGH/NS.

**Please contact me in case of disagreements,
inconsistencies or errors: samir@dermocentro.com.br**