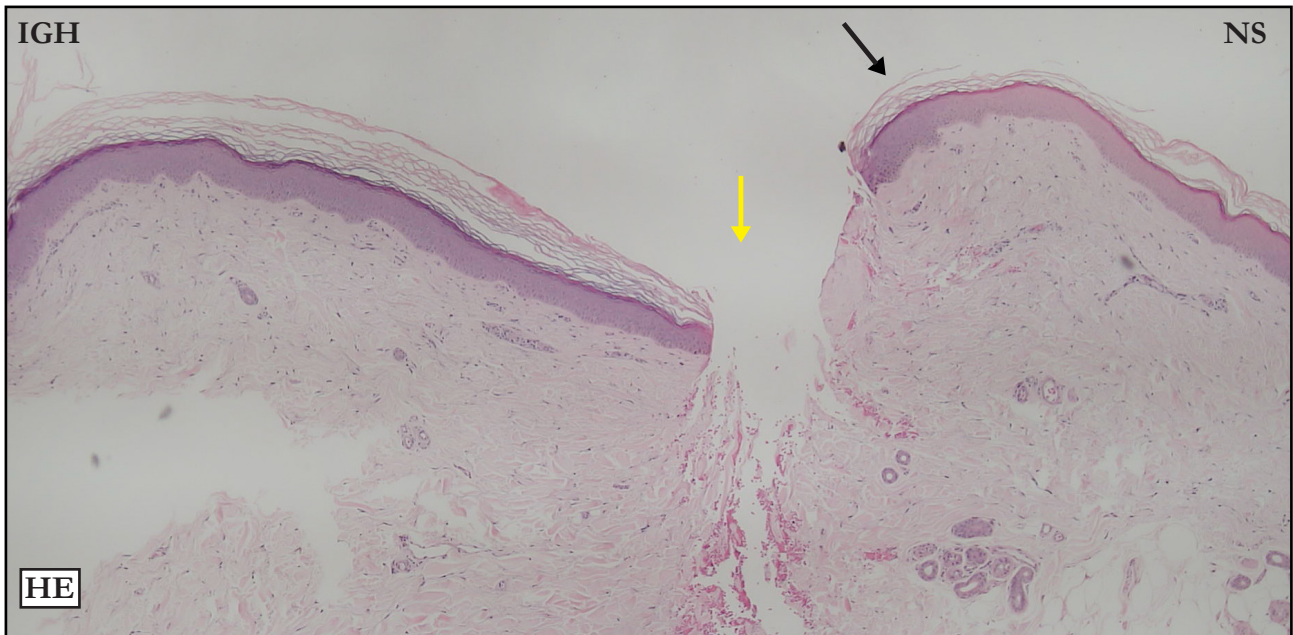


## CASE 04

### HEMATOXYLIN-EOSIN (HE):



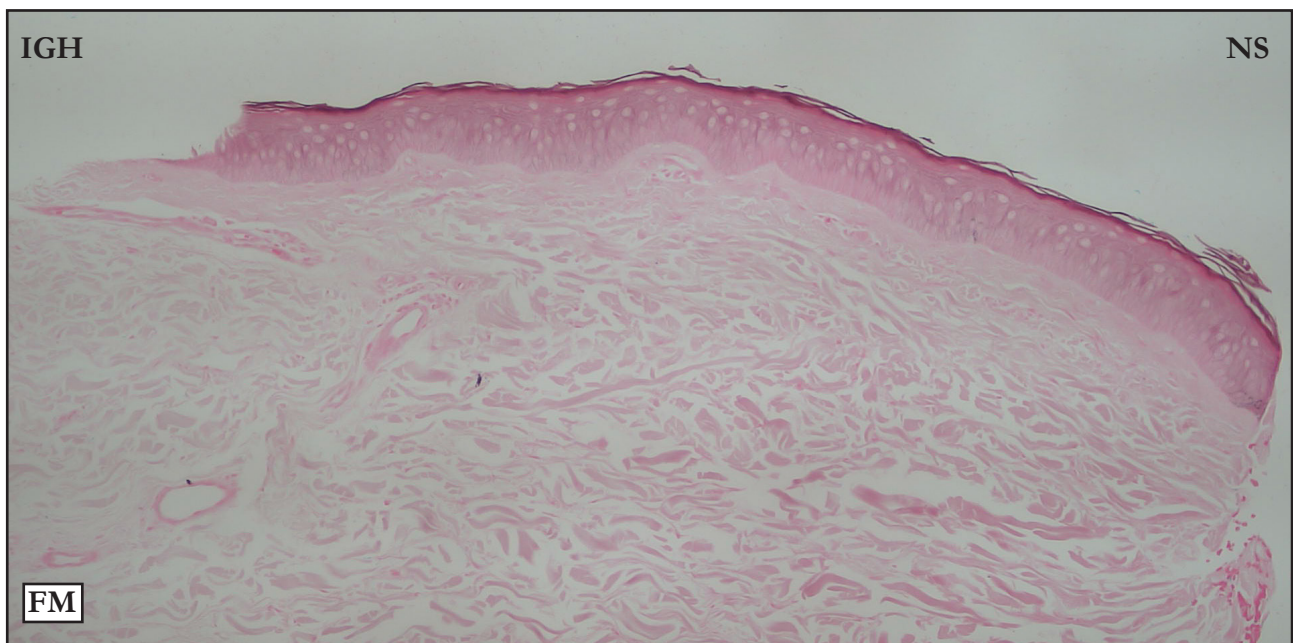
**HE:** Poorly defined IGH/NS limit (black arrow) because hyperkeratosis is not abrupt. Moderate basket-weave hyperkeratosis. No acanthosis or flattening. Slight hypergranulosis.

Yellow arrow - indicates where incision was done after the biopsy to show the IGH/NS limit.

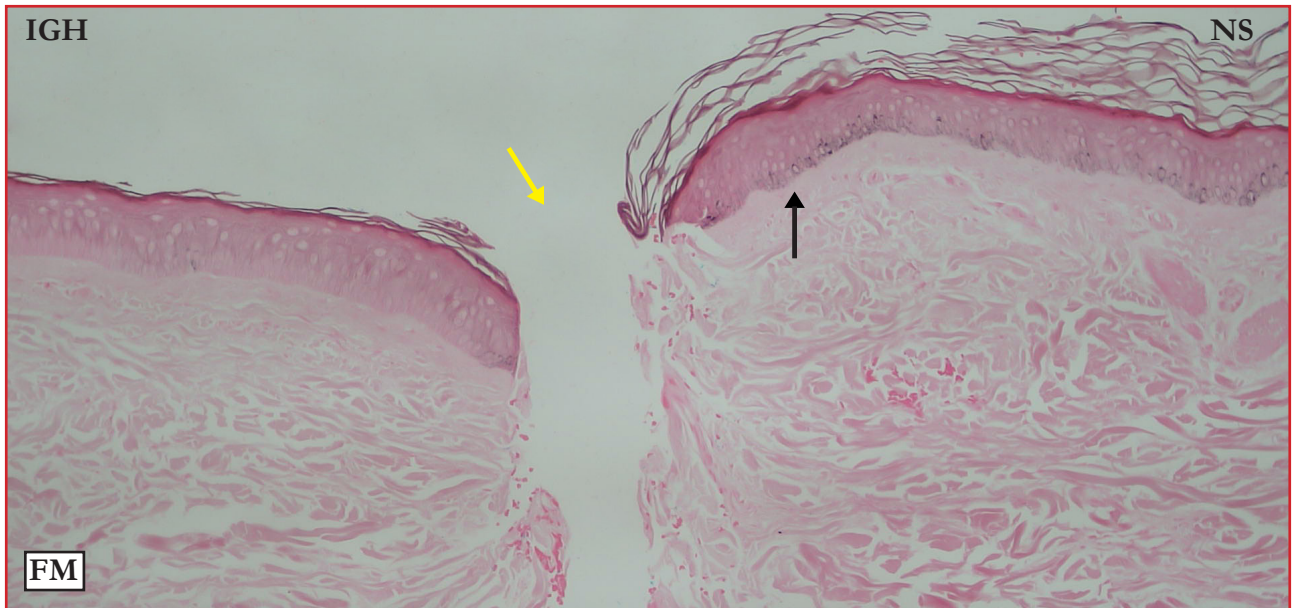
**HE:** Limite IGH/NS mal definido (seta preta) porque a hiperqueratose não é abrupta. Moderada hiperqueratose basquet wave. Acanthose ou retificação ausentes. Leve hipergranulose.

Seta amarela – indica a incisão cirúrgica realizada após a biópsia para delimitar IGH/NS.

### FONTANA-MASSON (FM):







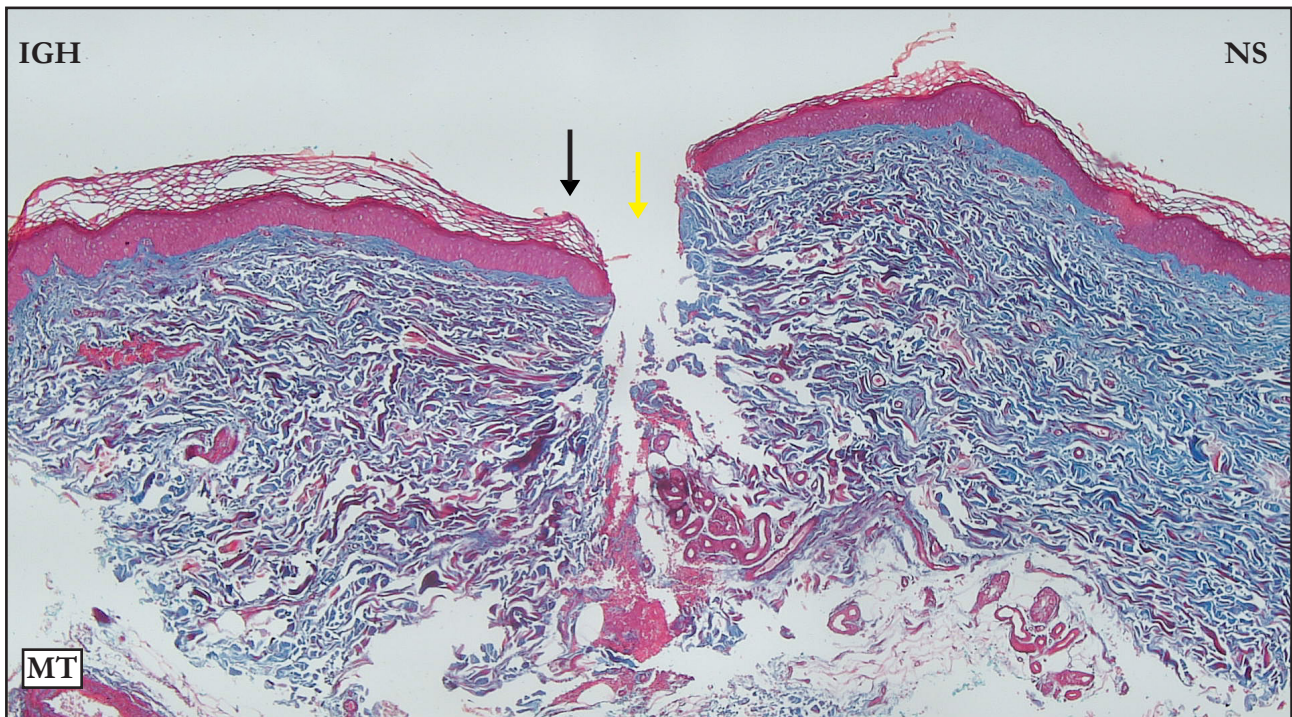
**FM:** Well defined IGH/NS limit (black arrow); the reference is the interruption of basal layer melanin pigmentation. The corneal layer detached during histological processing. There is no basal layer melanin in the IGH area.

Yellow arrow - indicates where incision was done after the biopsy to show the IGH/NS limit.

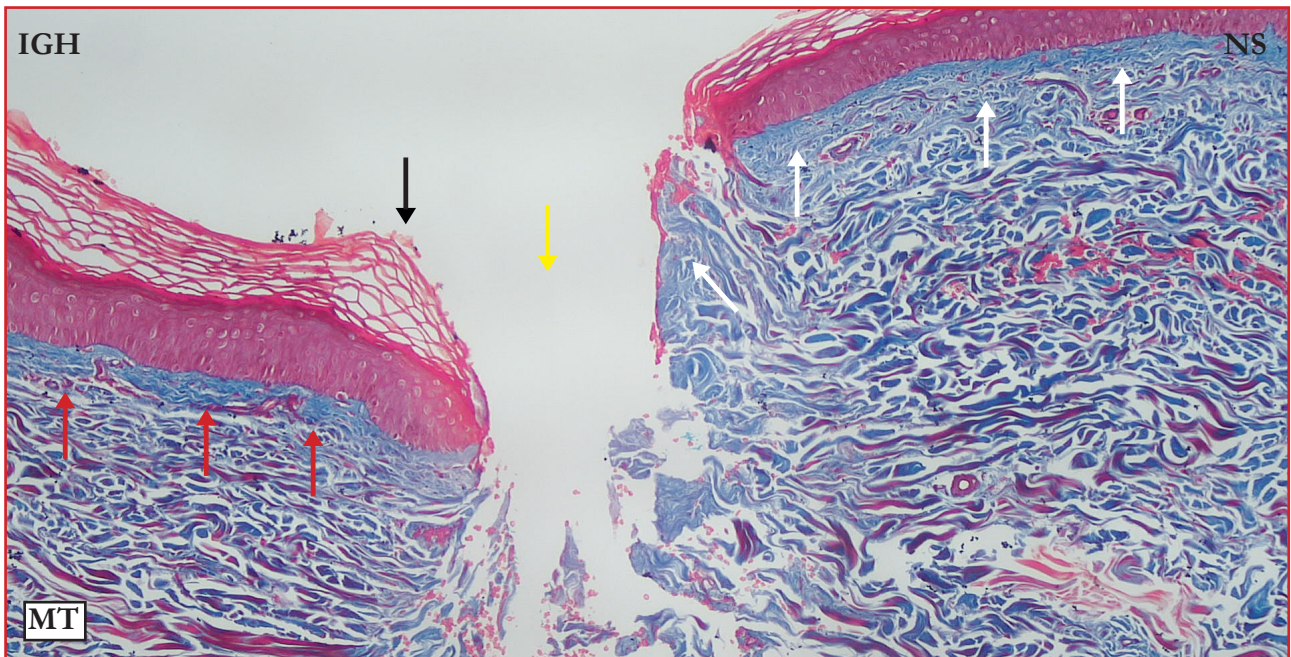
**FM:** Limite IGH/NS bem definido (seta preta), a referência é a interrupção da pigmentação melânica da camada basal. A camada córnea destacou-se durante o processamento histológico. Ausência de melanina na camada basal da IGH.

Seta amarela – indica a incisão cirúrgica realizada após a biópsia para delimitar IGH/NS.

### MASSON'S TRICHROME (MT):







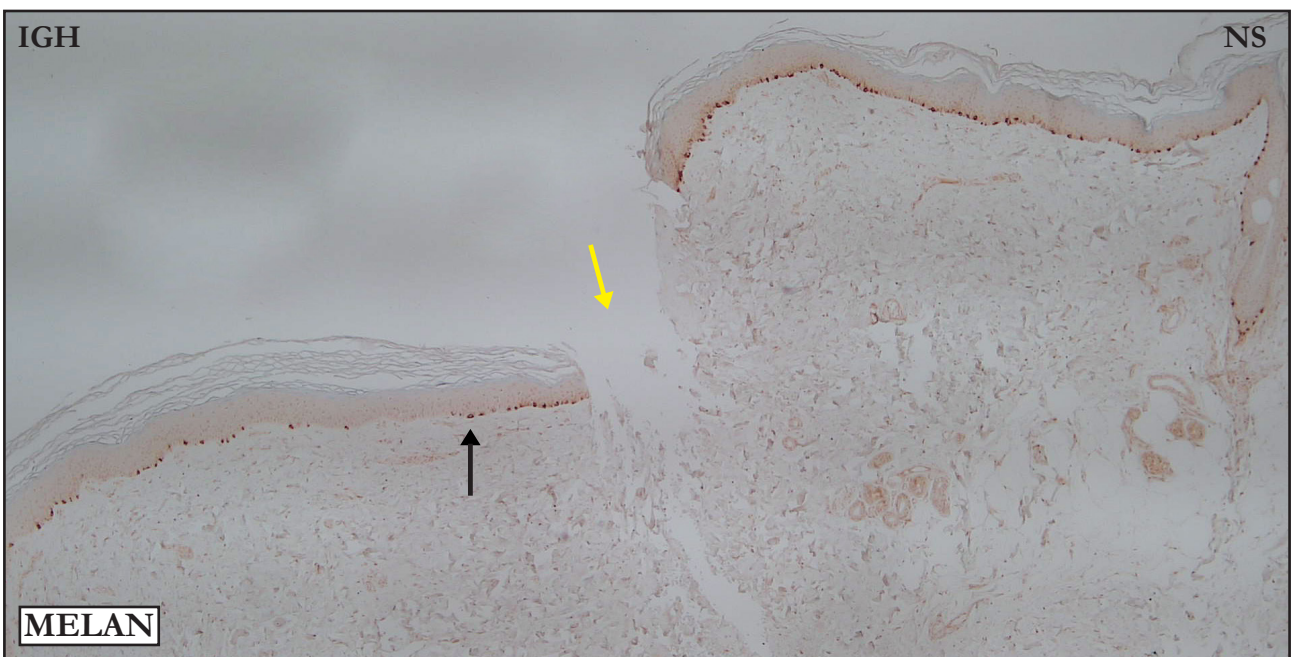
**MT:** Well defined IGH/NS limit (black arrow); the reference is where hyperkeratosis starts. In low and high magnifications, compare stain intensity and compacted superficial dermis in IGH area (red arrows) with NS superficial dermis (white arrows).

Yellow arrow indicates where incision was done after the biopsy to show the IGH/NS limit.

**MT:** Limite IGH/NS bem definido (setas pretas), a referência é o início da hiperqueratose. Compare no maior e menor aumentos a intensidade da coloração e a compactação da derme superficial da IGH (setas vermelhas) com a derme superficial da NS (setas brancas).

Setas amarelas – indicam a incisão realizada após a biópsia para delimitar IGH/NS.

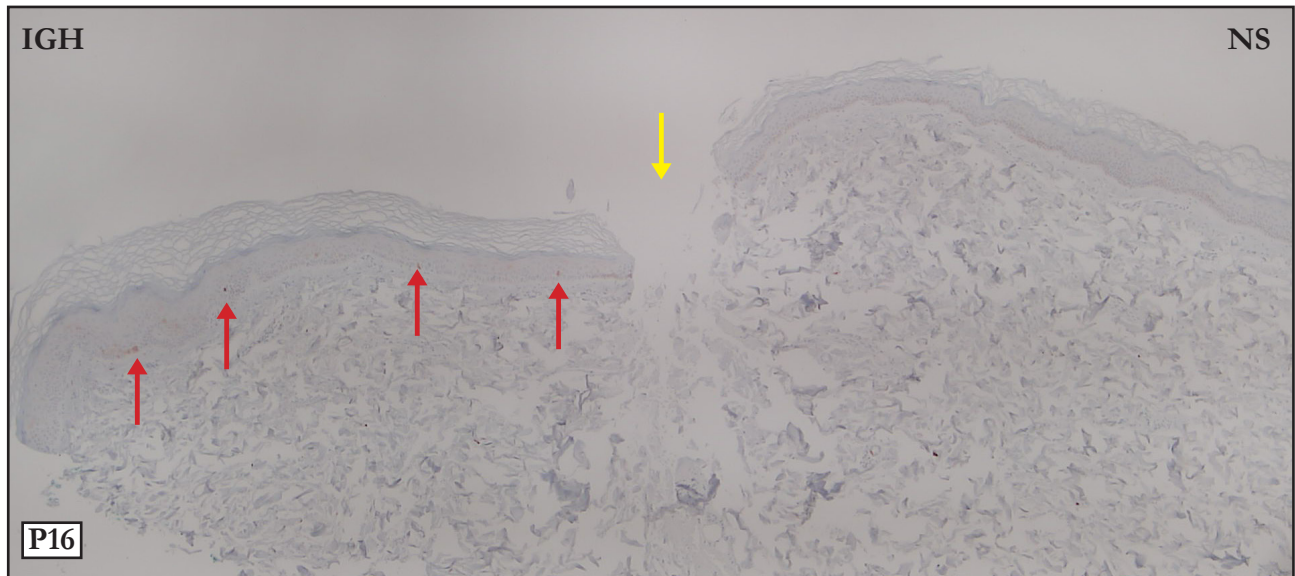
#### MELAN A:



**MELAN:** Panoramic photo. Black arrow points to the IGH/NS limit; the reference is the reduction in the number of melanocytes. There are fewer melanocytes in the IGH segment. Yellow arrow - indicates where incision was done after the biopsy to show the IGH/NS limit.

**MELAN:** Foto panorâmica. Limite IGH/NS assinalado pela seta preta, a referência é a redução numérica dos melanócitos. Melanócitos em menor quantidade no segmento da IGH. Seta amarela - indica a incisão realizada após a biópsia para delimitar IGH/NS.

**P16:**



**P16:** Few P16 positive epidermal cells in the IGH area (red arrows).

Yellow arrow indicates where incision was done after the biopsy to show the IGH/NS limit.

**P16:** Poucas células epidérmicas P16 positivas (setas vermelhas) no segmento IGH

Seta amarela – indica a incisão realizada após a biópsia para delimitar IGH/NS

**Please contact me in case of disagreements,  
inconsistencies or errors: [samir@dermocentro.com.br](mailto:samir@dermocentro.com.br)**