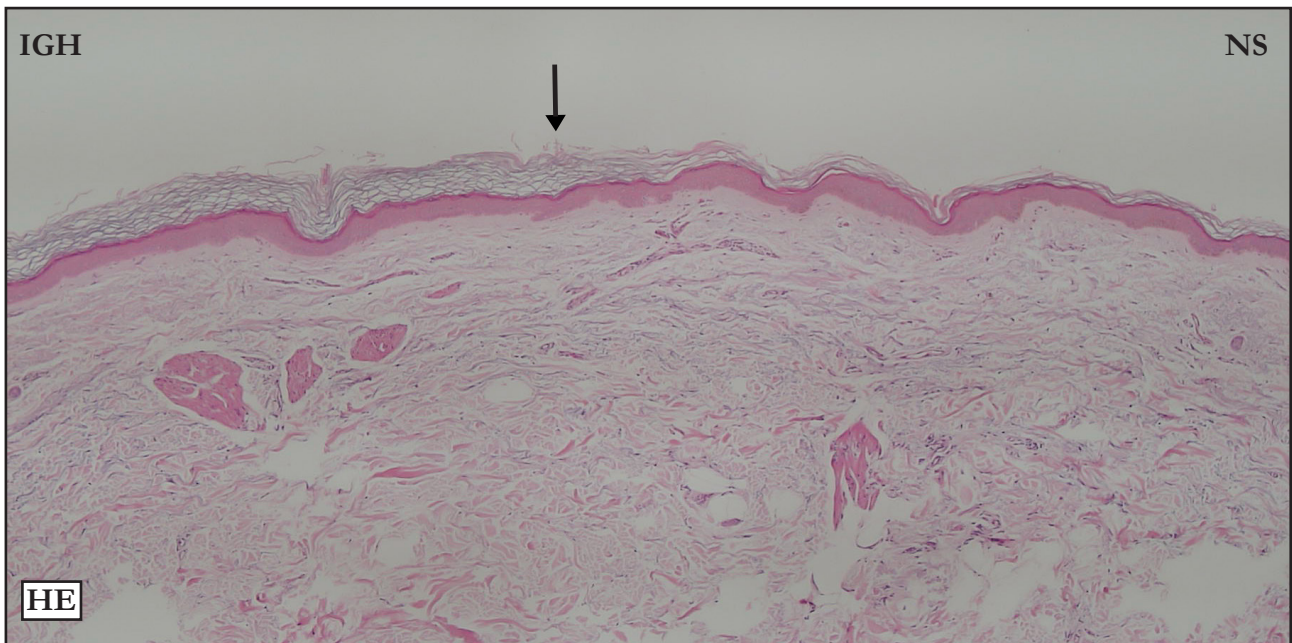
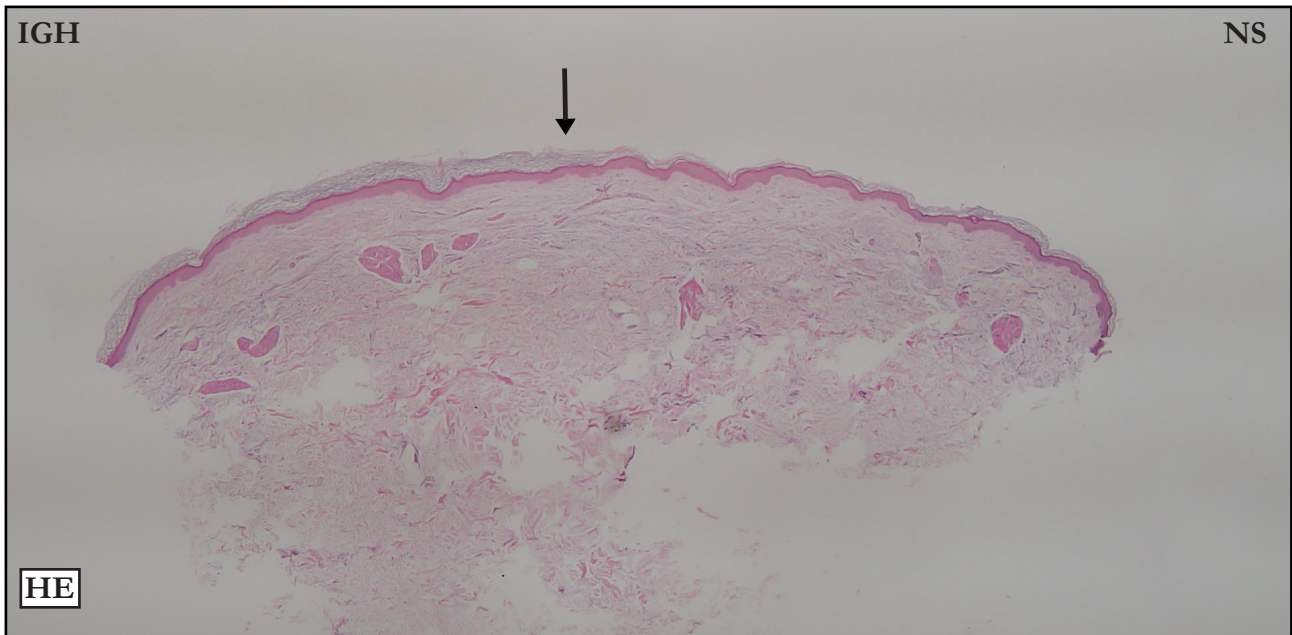


## CASE 05

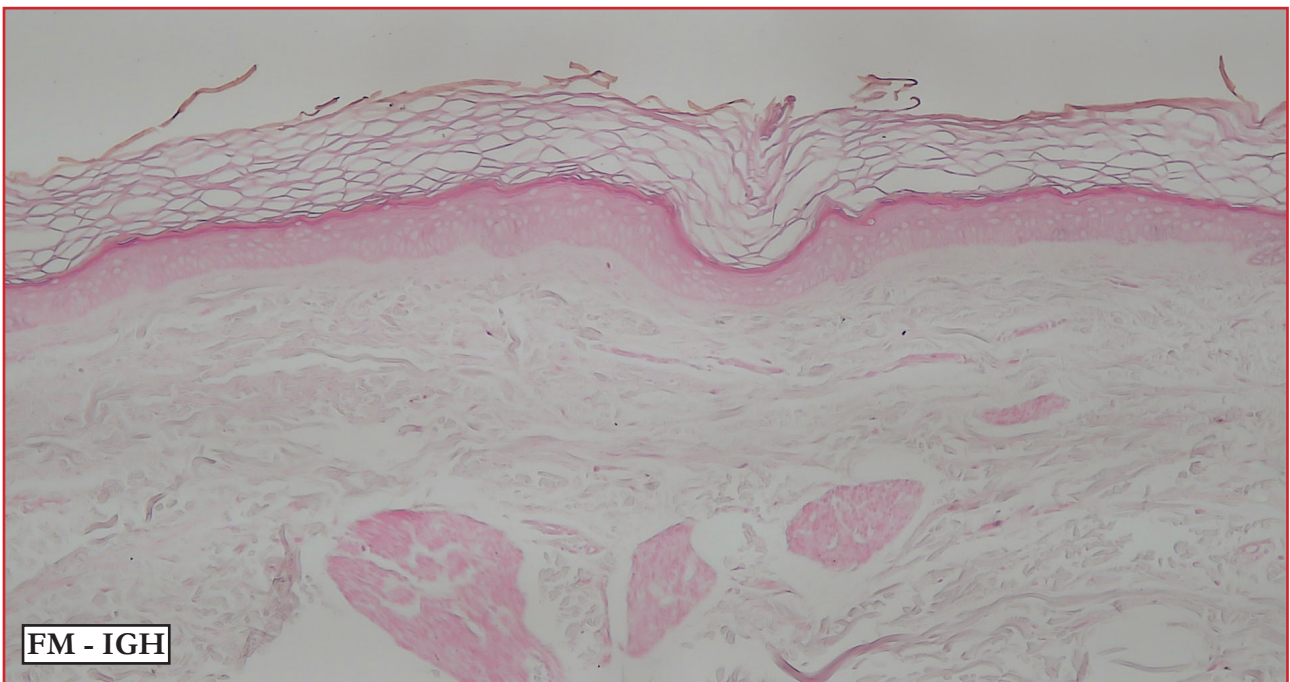
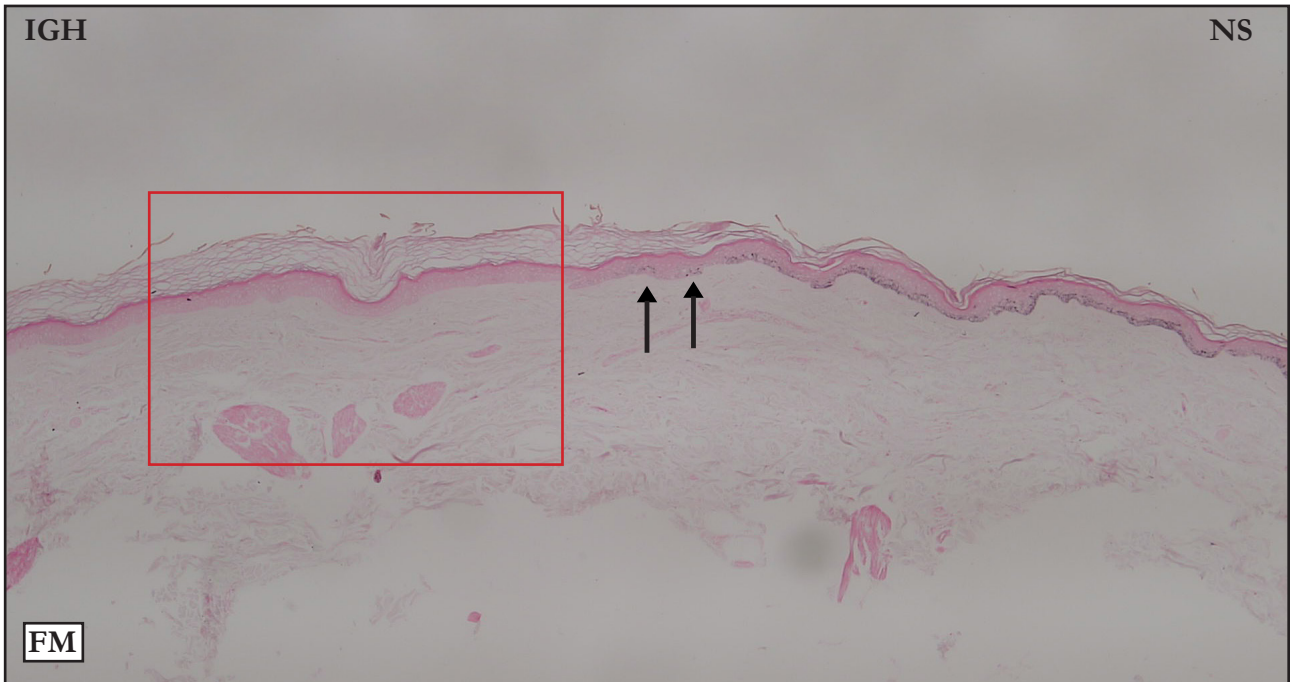
### HEMATOXYLIN-EOSIN (HE):



**HE:** Poorly defined IGH/NS limit (black arrow); the reference is where hyperkeratosis starts. Moderate basket-weave hyperkeratosis. No acanthosis. Slight flattening.

**HE:** Limite IGH/NS mal definido (seta preta), a referência é o início da hiperqueratose. Moderada hiperqueratose basquet wave. Ausência de acantose. Discreta retificação

## FONTANA–MASSON (FM):



**FM:** Well defined IGH/NS limit (black arrow); the reference is the interruption of basal layer melanin pigmentation. The corneal layer detached during histological processing. There is no basal layer melanin in the IGH area.

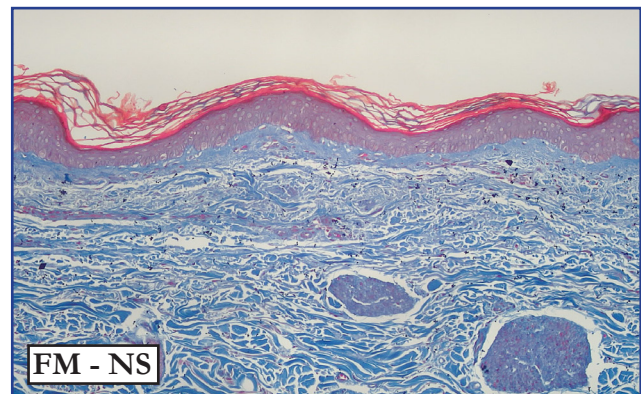
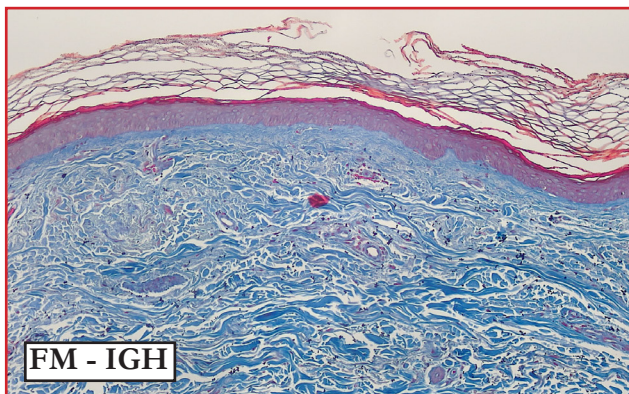
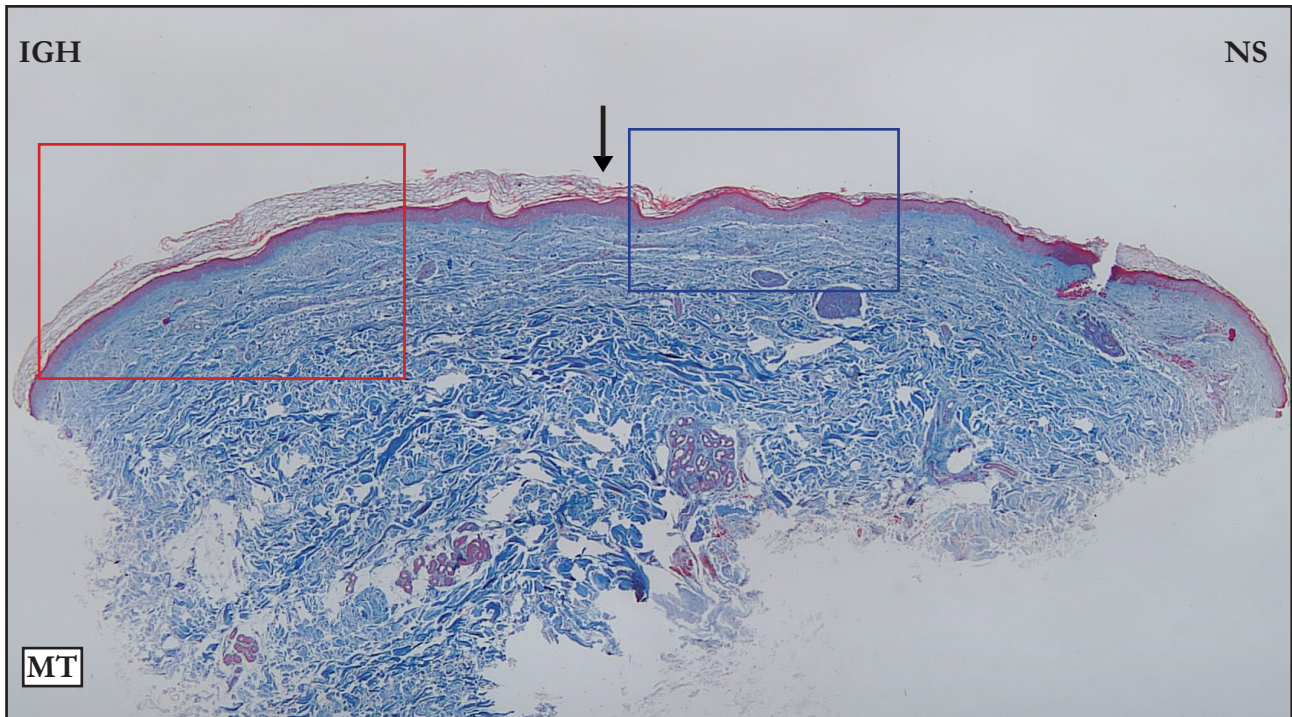
Yellow arrow - indicates where incision was done after the biopsy to show the IGH/NS limit.

**FM:** Limite IGH/NS bem definido (seta preta), a referência é a interrupção da pigmentação melânica da camada basal. A camada córnea destacou-se durante o processamento histológico. Ausência de melanina na camada basal da IGH.

Seta amarela – indica a incisão cirúrgica realizada após a biópsia para delimitar IGH/NS.



## MASSON'S TRICHROME (MT):

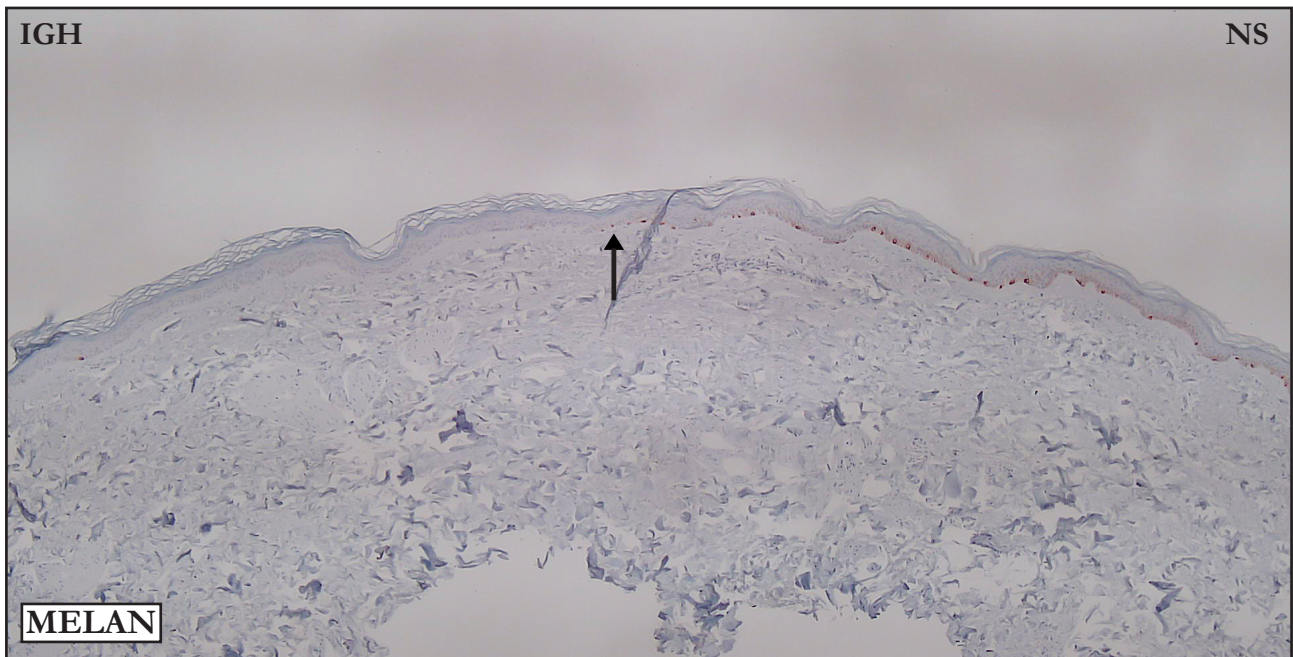


**MT:** Fragment with heterogenous papillar dermis staining and compactness. We classified this case as “inconclusive”.

**MT:** Esse é um caso pelo qual a derme papilar tem coloração e compactação muito variável em todo o fragmento, motivo pelo qual optamos pelo status “inconclusivo”.



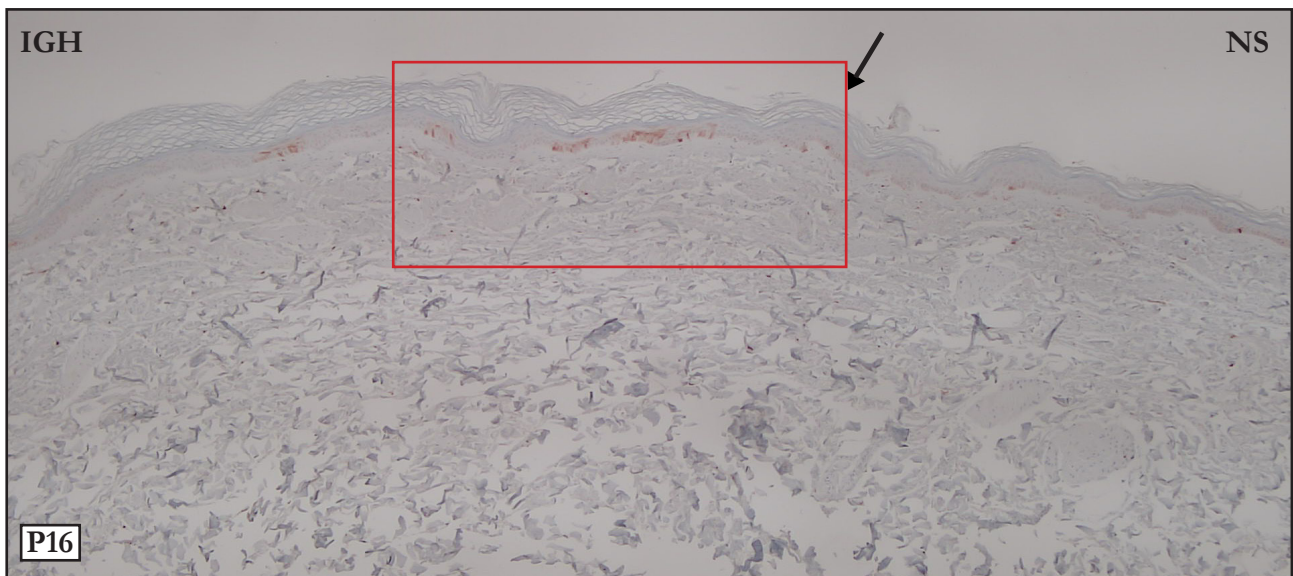
**MELAN A:**

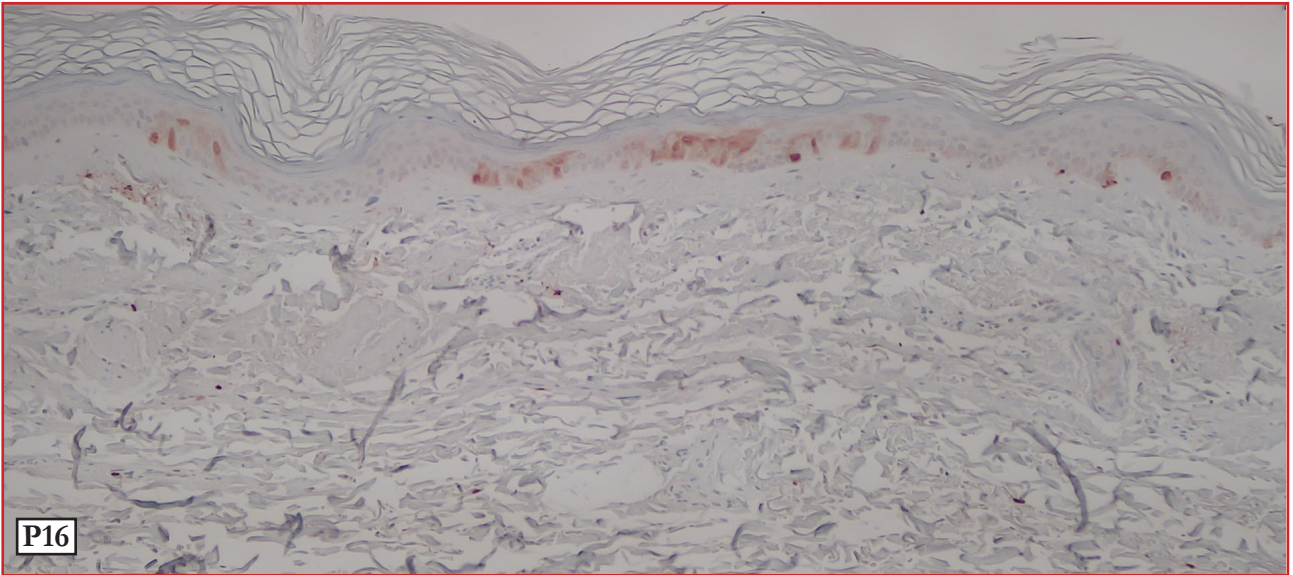


**MELAN:** Panoramic photo. Yellow arrow points to IGH/NS limit; the reference is the reduction in the number of melanocytes.

**MELAN:** Foto panorâmica. Limite IGH/NS assinalado pela seta amarela, a referência é a redução numérica dos melanócitos.

**P16:**





**P16:** Notice P16 positive epidermal cells in the IGH area.

**P16:** No segmento IGH observam-se células epidermicas P16 positivas.

**Please contact me in case of disagreements,  
inconsistencies or errors: [samir@dermocentro.com.br](mailto:samir@dermocentro.com.br)**