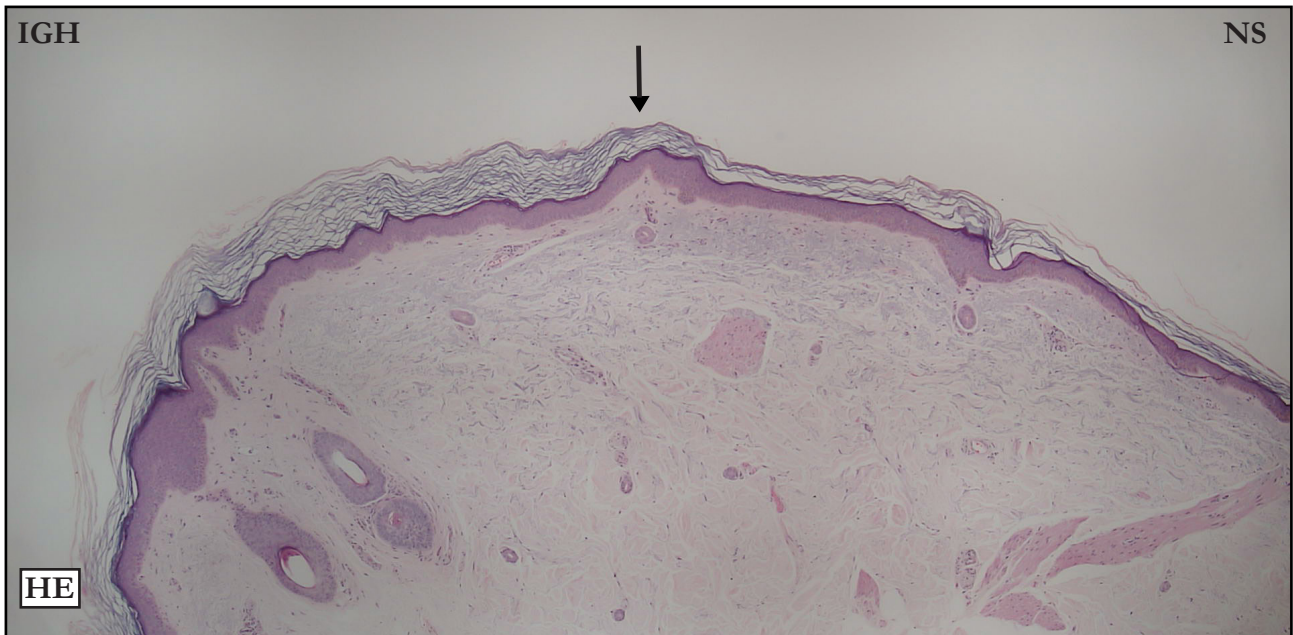


CASE 07

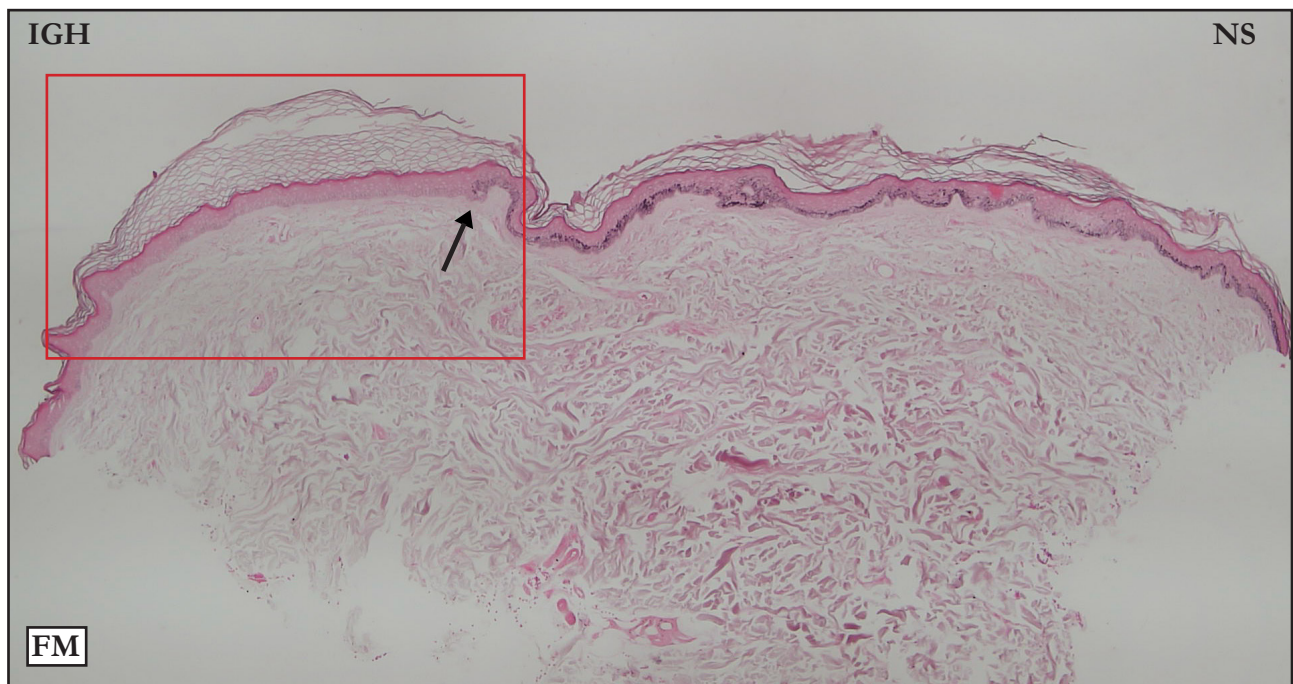
HEMATOXYLIN-EOSIN (HE):

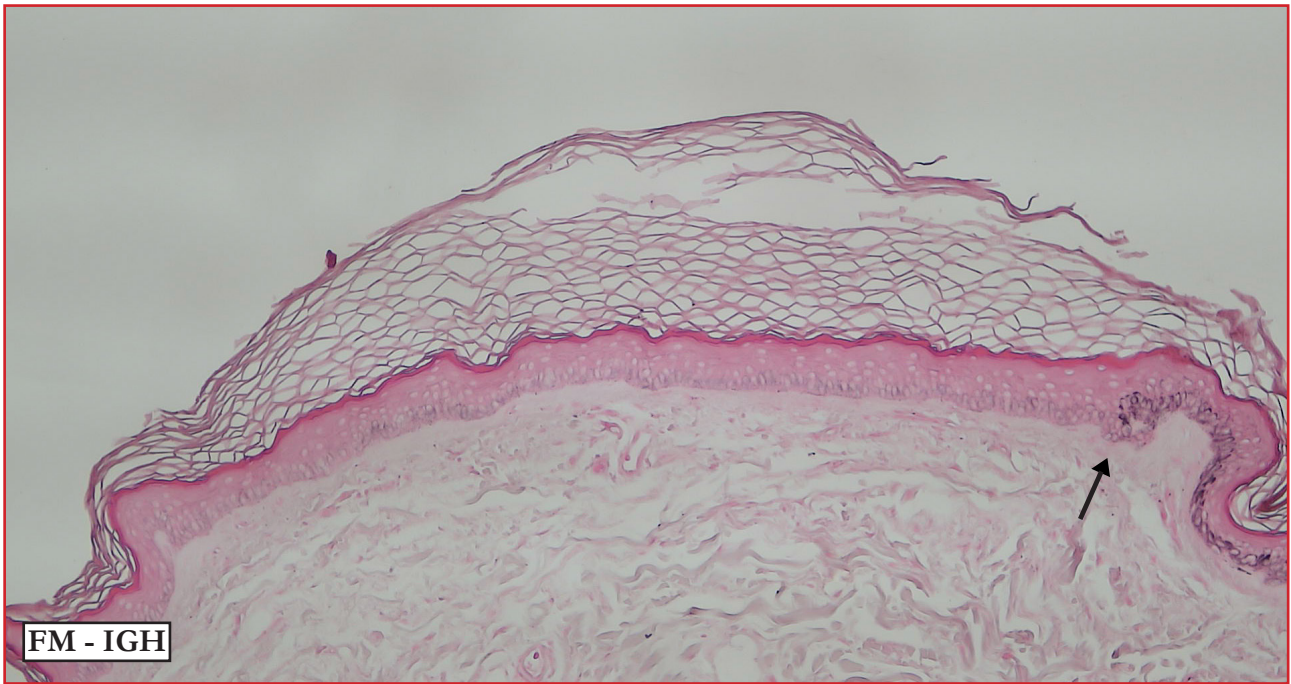


HE: Poorly defined IGH/NS limit (black arrow) because of progressive hyperkeratosis. Intense basket-weave hyperkeratosis. Slight acanthosis and hypergranulosis. No flattening.

HE: Limite IGH/NS mal definido (seta preta), a referência é o início da hiperqueratose, que no caso é progressiva. Intensa hiperqueratose basquet wave. Discretas acantose e hipergranulose. Retificação ausente.

FONTANA-MASSON (FM):

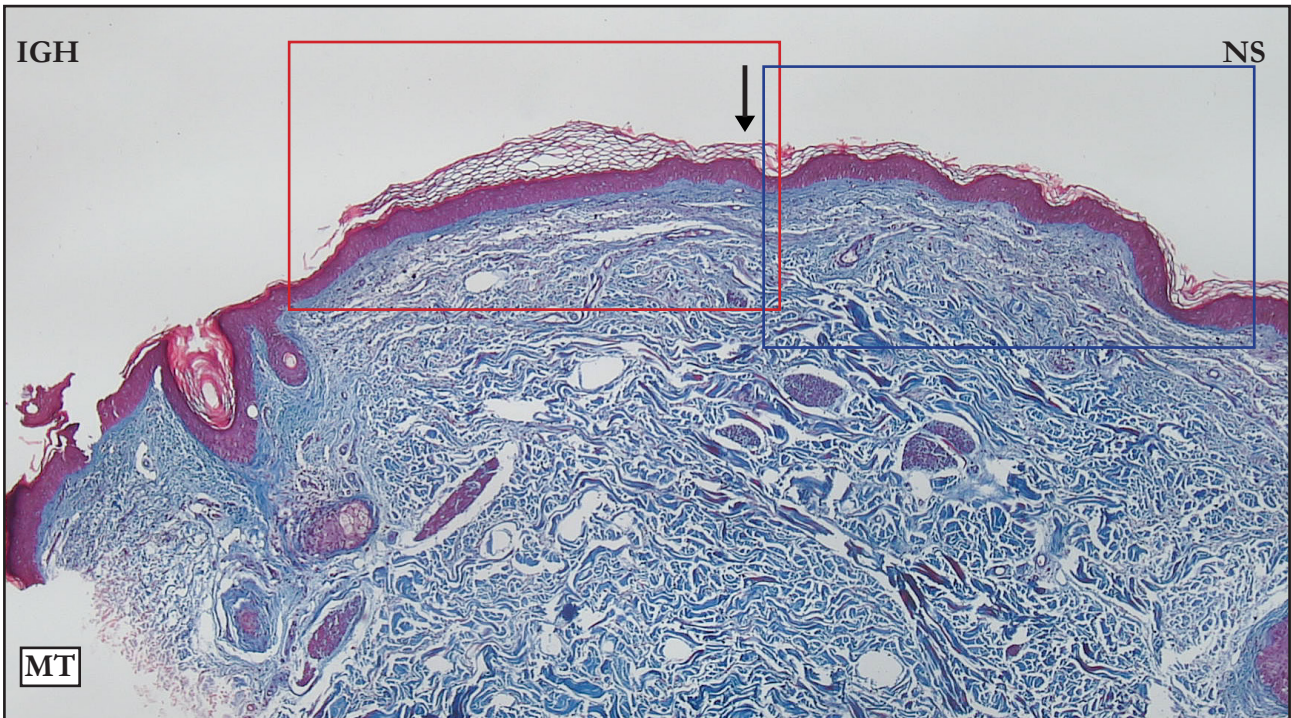


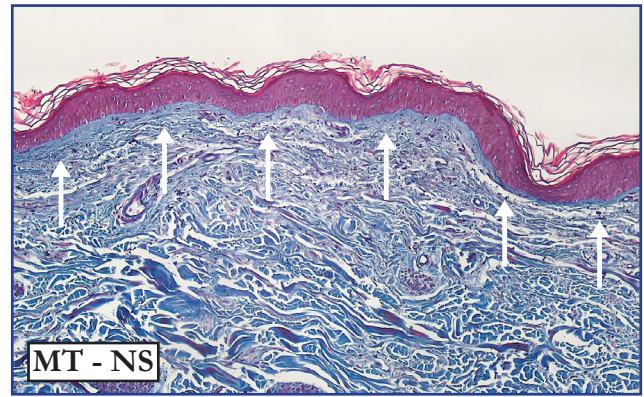
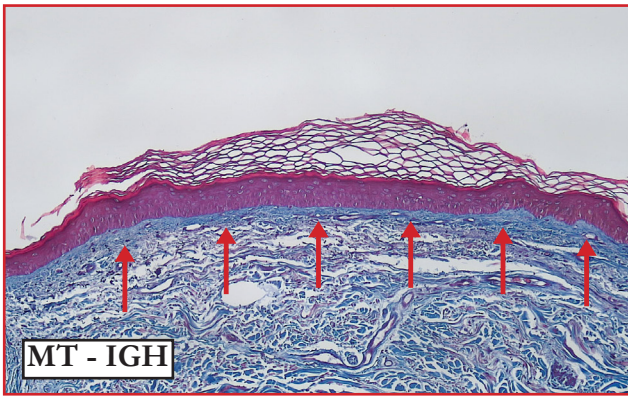


FM: Well defined IGH/NS limit (black arrows); the reference is the interruption of basal layer melanin. Notice that this limit is unrelated to where hyperkeratosis starts. IGH area with slight diffuse basal layer pigmentation

FM: Limite IGH/NS bem definido (setas pretas), a referência é a interrupção da pigmentação melânica da camada basal. Observe que este limite não tem relação com o início da hiperqueratose. Discreta pigmentação difusa da camada basal da IGH.

MASSON'S TRICHROME (MT):

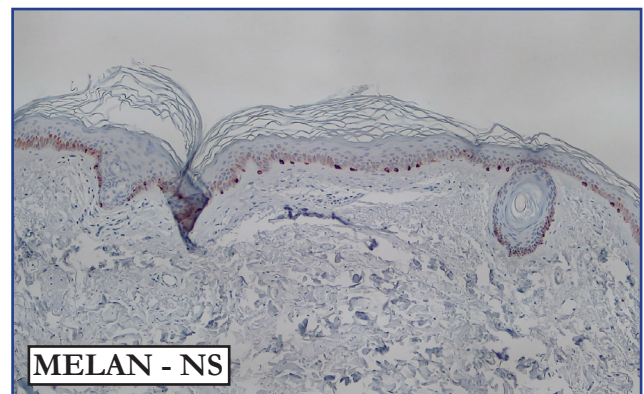
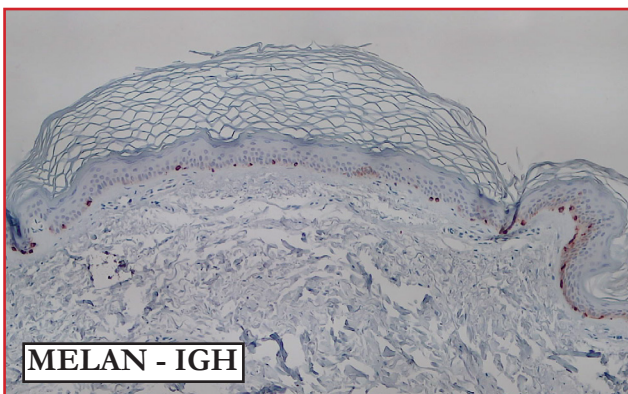
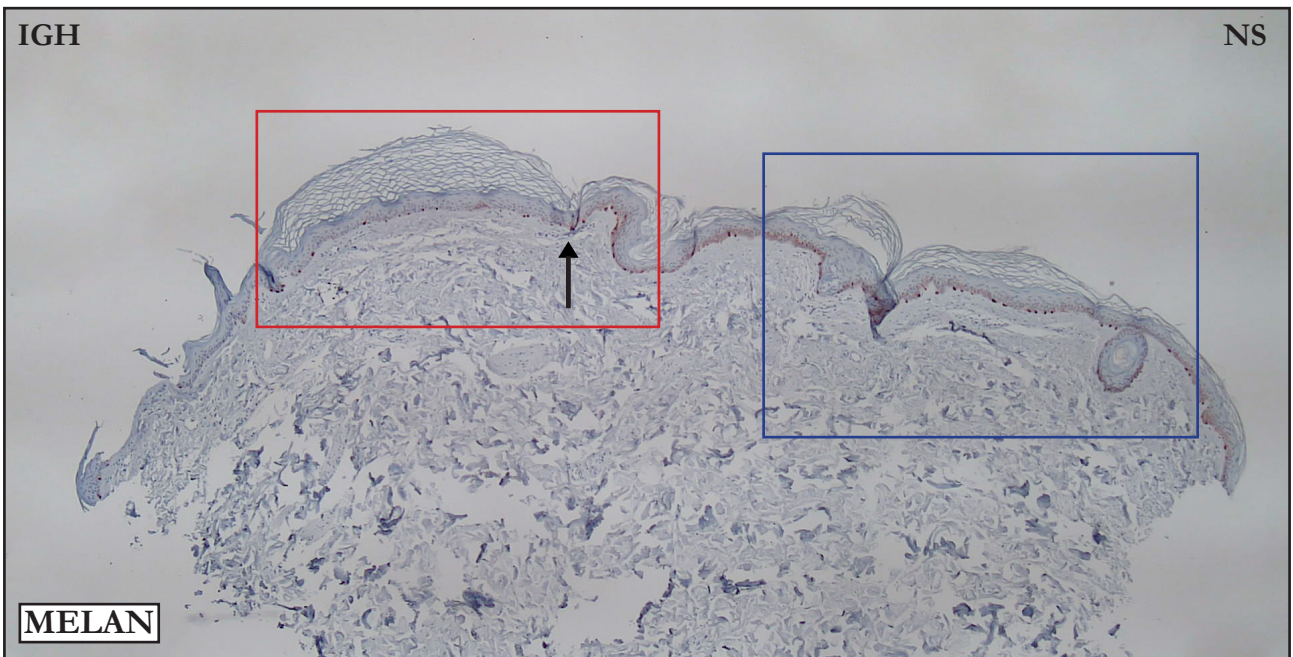




MT: Well defined IGH/NS limit (black arrow); the reference is where hyperkeratosis starts. Compare stain intensity and compacted superficial dermis in IGH area (red arrows) with NS superficial dermis (white arrows).

MT: Limite IGH/NS bem definido (seta preta), a referência é o início da hiperqueratose. Compare a intensidade da coloração e a compactação da derme superficial da IGH (setas vermelhas) com a derme superficial da NS (setas brancas).

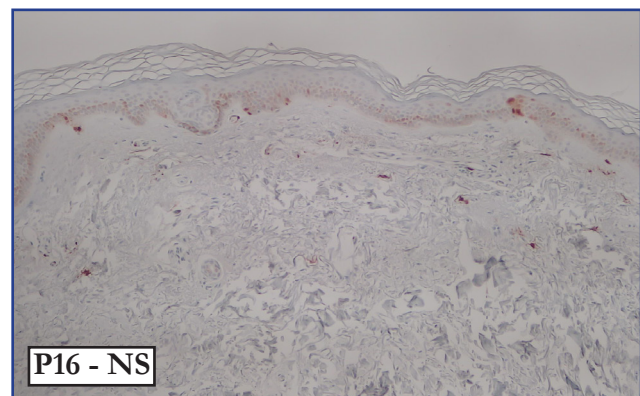
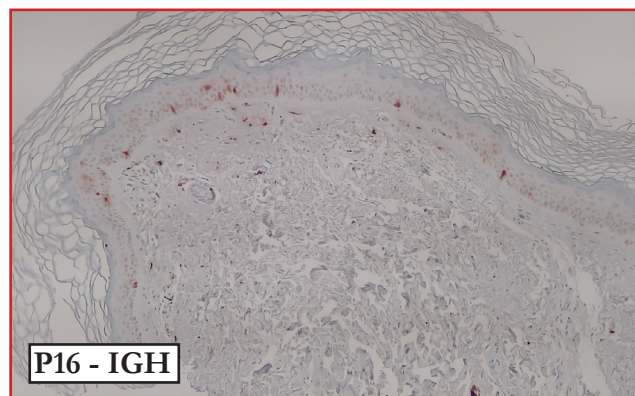
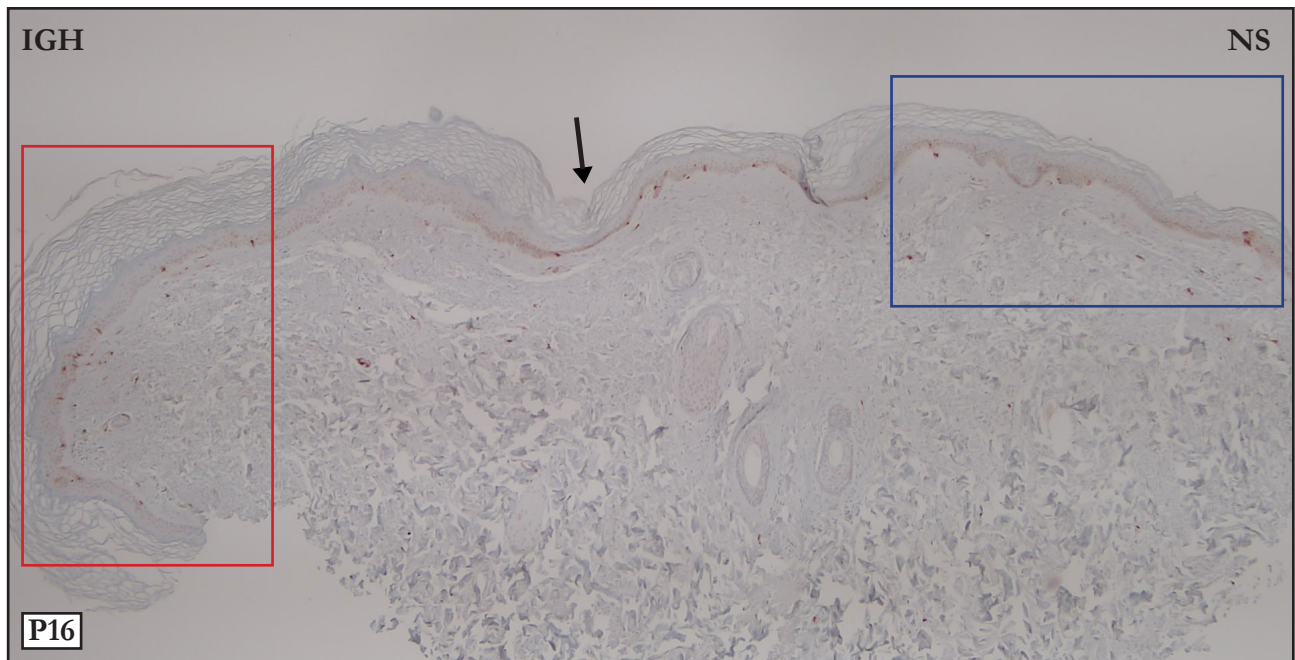
MELAN A:



MELAN: Panoramic photo. Black arrow points to the IGH/NS limit; the reference is the reduction in the number of melanocytes. Upper microphotographs. Compare the number of melanocytes in IGH and NS areas

MELAN: Foto panorâmica. Limite IGH/NS assinalado pela seta preta, a referência é a redução numérica dos melanócitos. Microfotografias acima. Compare a quantidade de melanócitos nos segmentos IGH/NS.

P16:



P16: Positive epidermal cells and fibroblasts in IGH and NS areas.

P16: Células epidérmicas e fibroblastos positivos para P16, nos segmentos IGH/NS.

**Please contact me in case of disagreements,
inconsistencies or errors: samir@dermocentro.com.br**