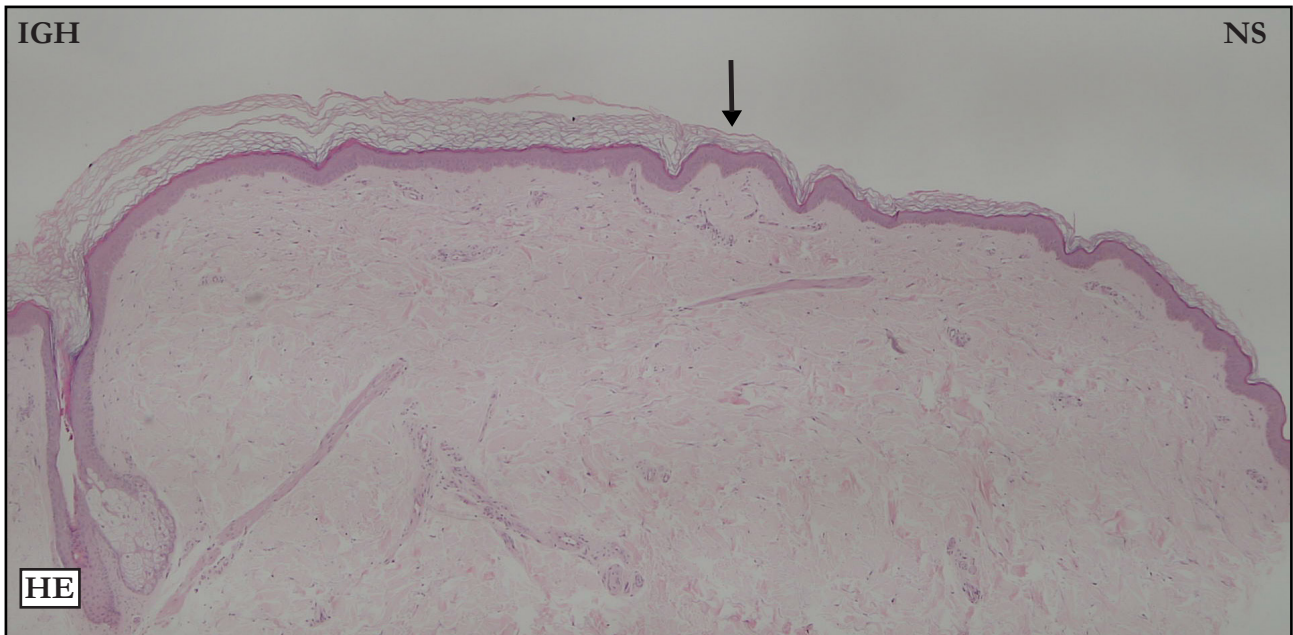


CASE 09

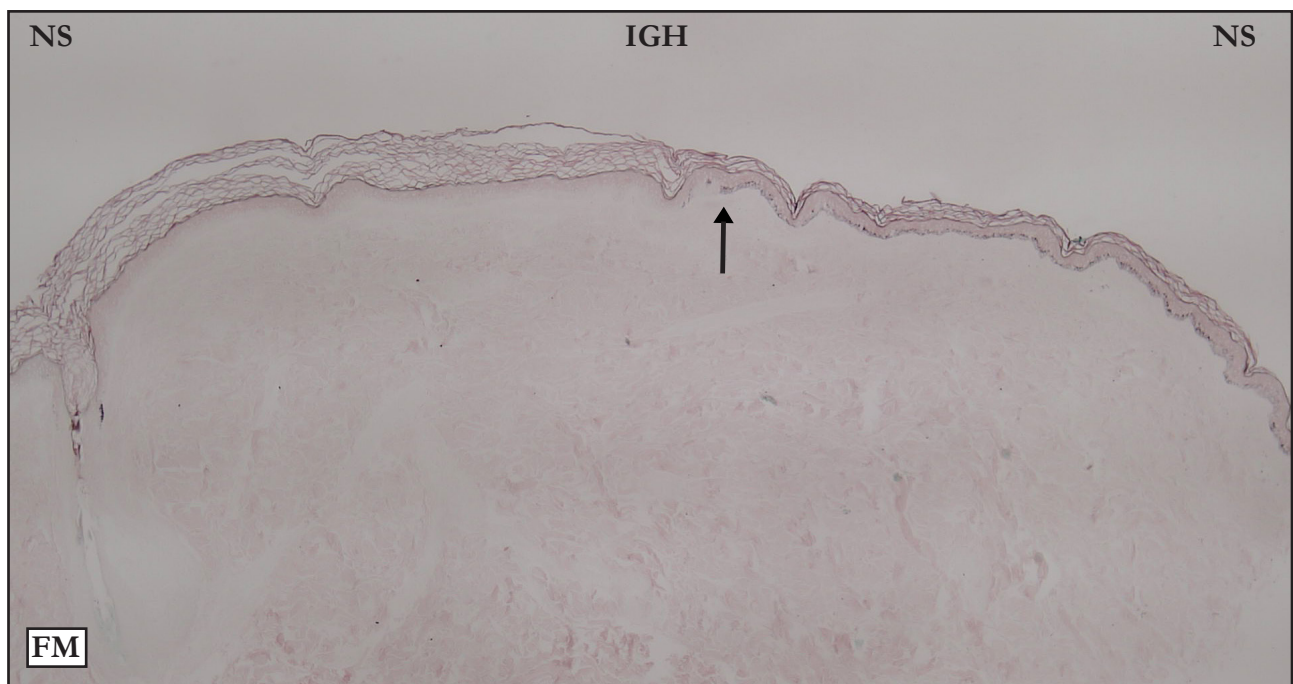
HEMATOXYLIN-EOSIN (HE):



HE: Well defined IGH/NS limit (black arrow); the reference is where hyperkeratosis starts. Intense basket-weave hyperkeratosis. Slight acanthosis, hypergranulosis and flattening.

HE: Limite IGH/NS bem definido (seta preta), a referência é o início da hiperqueratose. Intensa hiperqueratose basquet wave. Discretas acantose, hipergranulose e retificação.

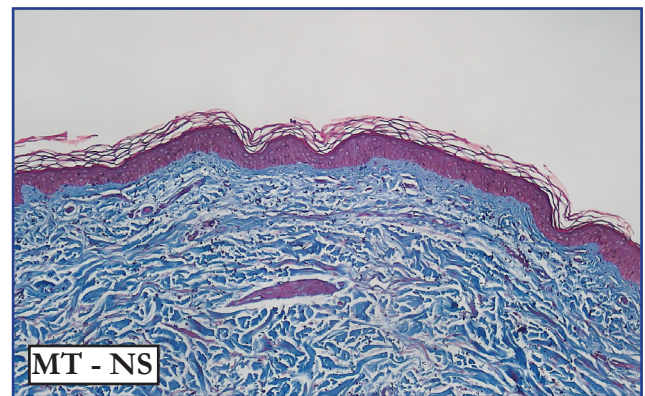
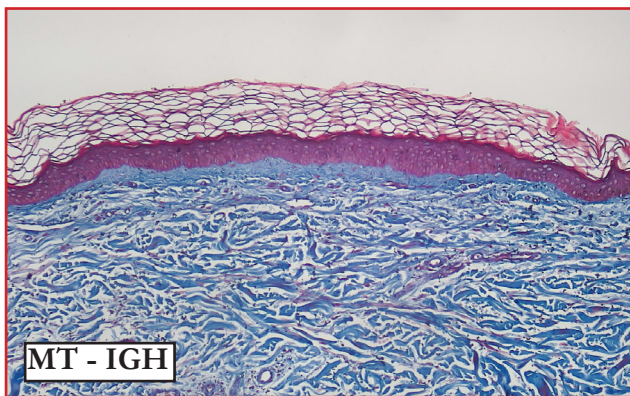
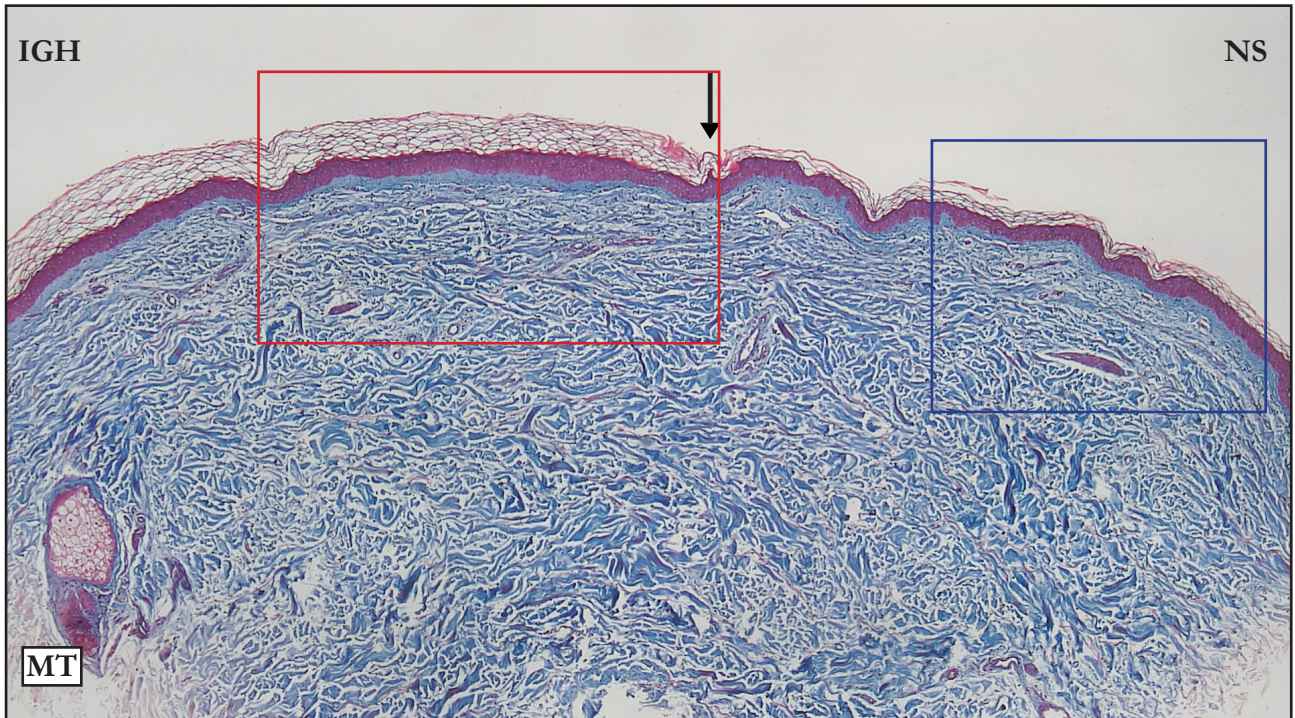
FONTANA-MASSON (FM):



FM: Well defined IGH/NS limit (black arrow); the reference is the interruption of basal layer melanin pigmentation. No melanin pigment in IGH basal layer.

FM: Limite IGH/NS bem definido (seta preta), a referência é a interrupção da pigmentação melânica da camada basal. Ausência de pigmento na camada basal da IGH.

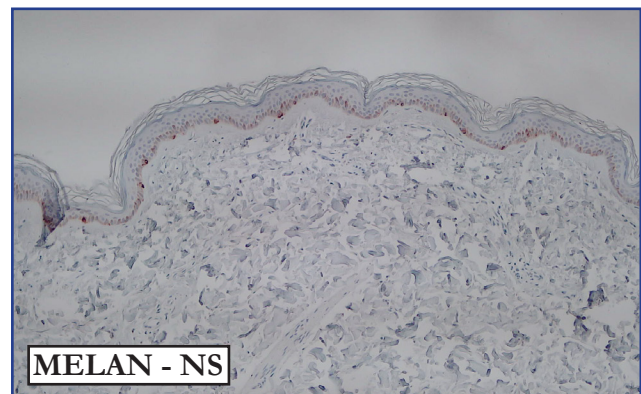
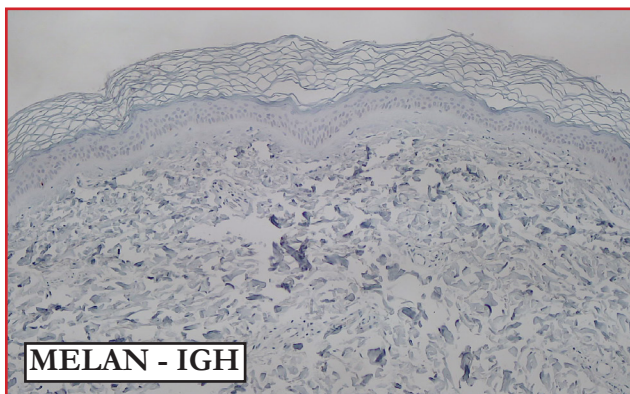
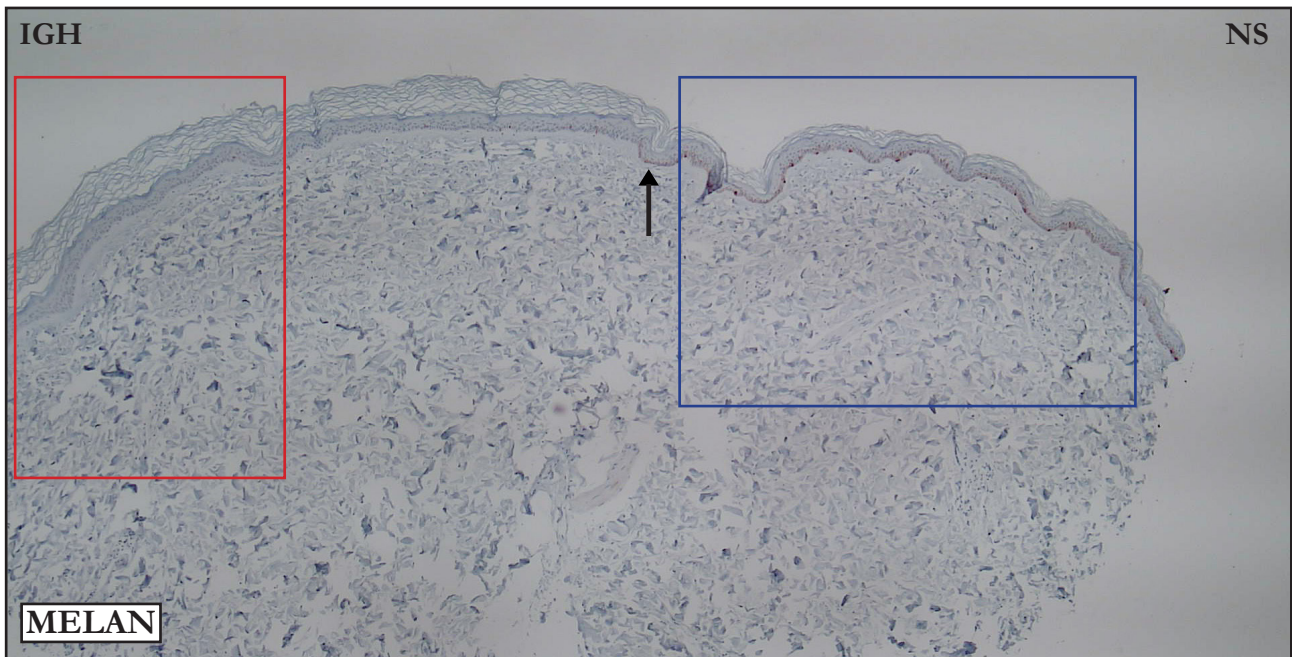
MASSON'S TRICHROME (MT):



MT: Well defined IGH/NS limit (black arrow); the reference is where hyperkeratosis starts. Fragment with heterogenous papillar dermis staining and compactness. We classified this case as “inconclusive”.

MT: Limite IGH/NS bem definido (seta preta), a referência é o início da hiperqueratose. Esse é um caso pelo qual a derme papilar tem coloração e compactação muito variável em todo o fragmento, motivo pelo qual optamos pelo status “inconclusivo”.

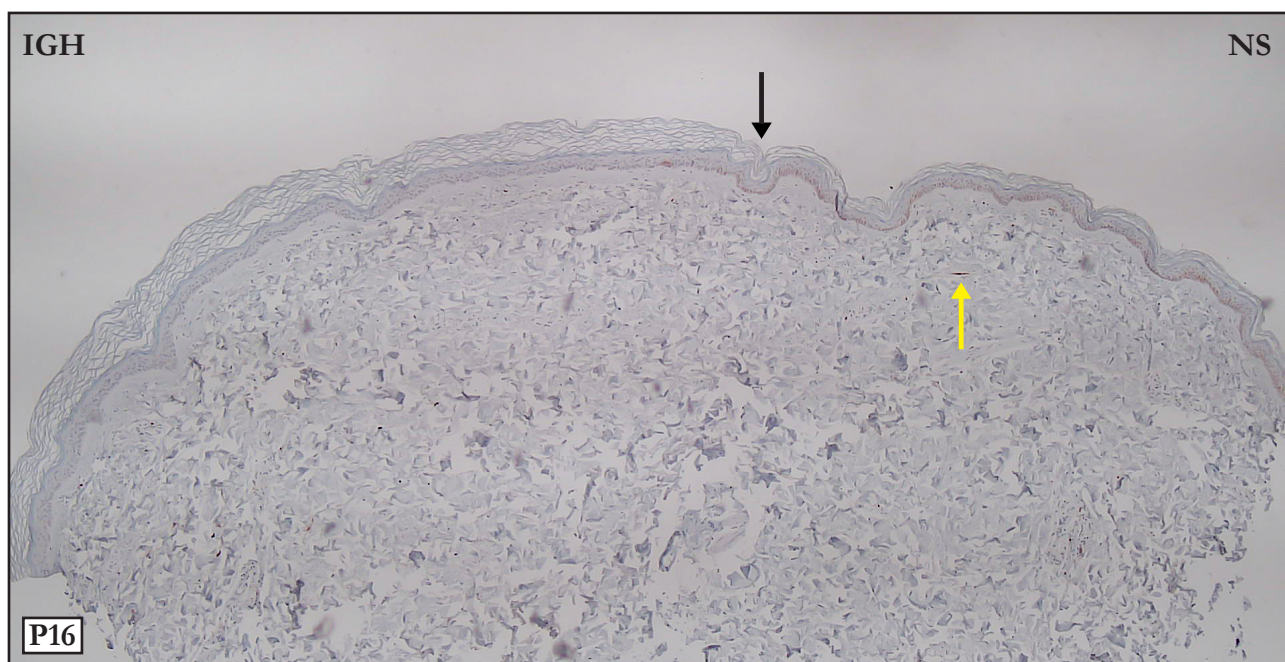
MELAN A:



MELAN: Panoramic photo. Yellow arrow points to the IGH/NS limit; the reference is the reduction in the number of melanocytes. Upper microphotographs - Compare the number of melanocytes in the IGH and NS areas. IGH- No melanocytes.

MELAN: Foto panorâmica. Limite IGH / PELE NORMAL assinalado pela seta preta, a referência é a redução numérica dos melanócitos. Microfotografias acima. Compare a quantidade de melanócitos nos segmentos IGH e PELE NORMAL. IGH – ausência de melanócitos

P16:



P16: Rare P16 positive fibroblasts in NS (yellow arrow).

P16: Raros fibroblastos P16 positivos na NS (seta amarela).

**Please contact me in case of disagreements,
inconsistencies or errors: samir@dermocentro.com.br**