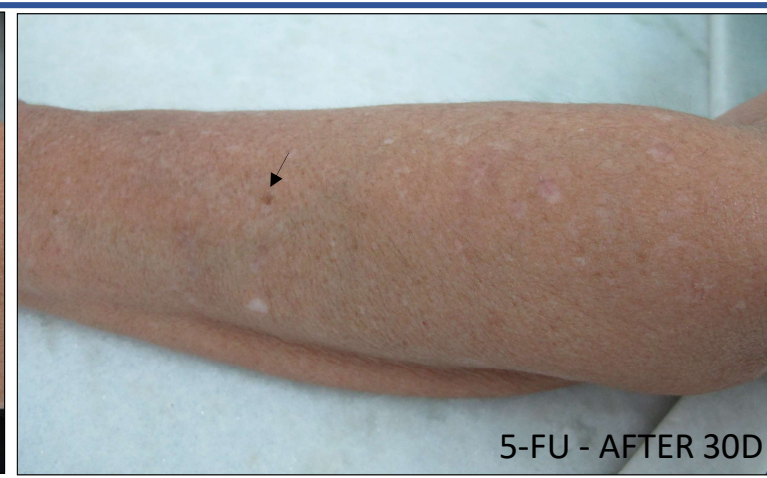
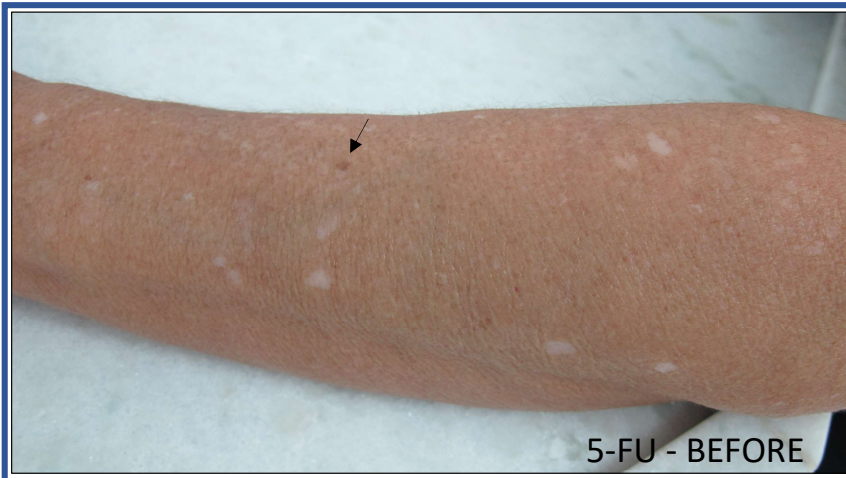


Participant 01



↙ Arrows for topographical orientations



Participant 02



↙ arrows for topographical orientations



Participant 03



5-FU - BEFORE



5-FU - AFTER 30D



saline - BEFORE

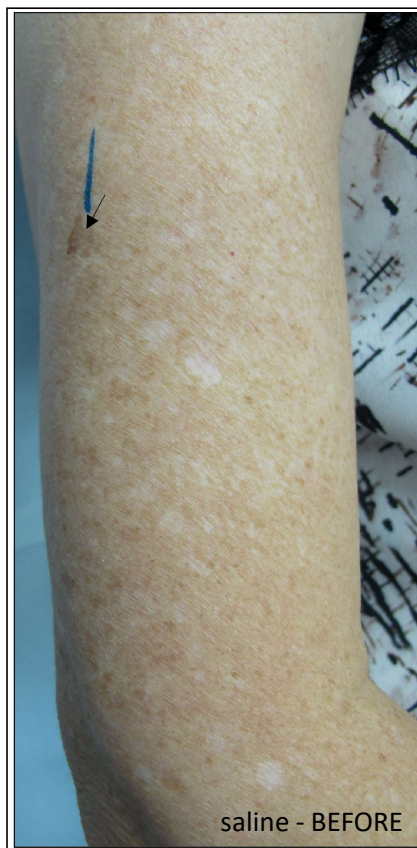


saline - AFTER 30D

Participant 04



↙ Arrows for topographical orientations



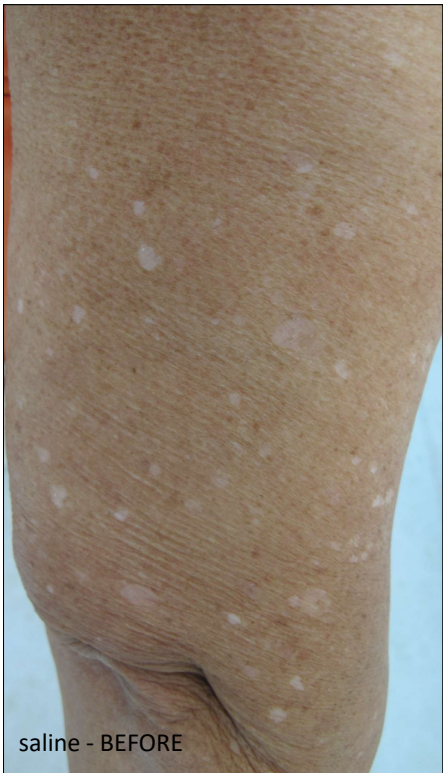
Participant 05



↙ Arrows for topographical orientations



Participant 06



Participant 07



Participant 08



photos published in "Activation of melanocytes in idiopathic guttate hypomelanosis after 5-fluorouracil infusion using a tattoo machine: Preliminary analysis of a randomized, split-body, single blinded, placebo controlled clinical trial"
DOI - 10.1016/j.jaad.2017.08.019



Participant 09



↙ Arrows for topographical orientations

Participant 10



○ Circles for topographical orientations



Participant 11



Saline hyperpigmentation arrows



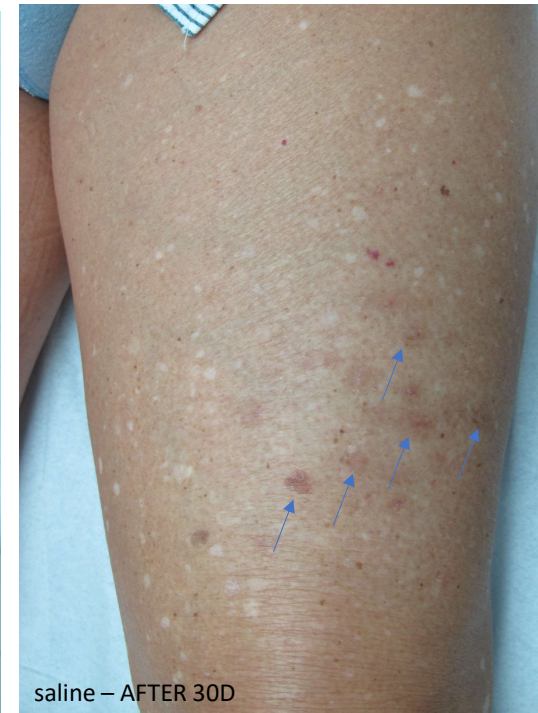
5-FU - BEFORE



5-FU - AFTER 30D




saline - BEFORE

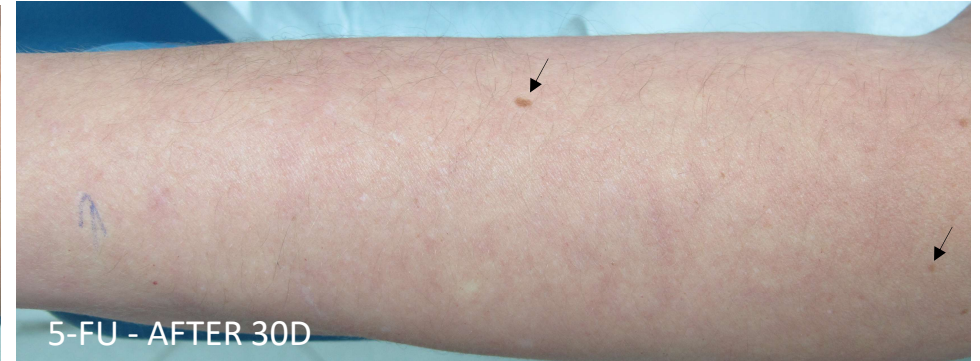
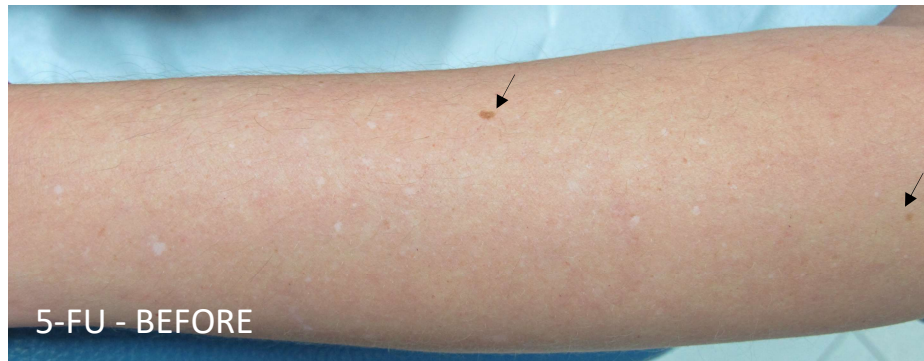
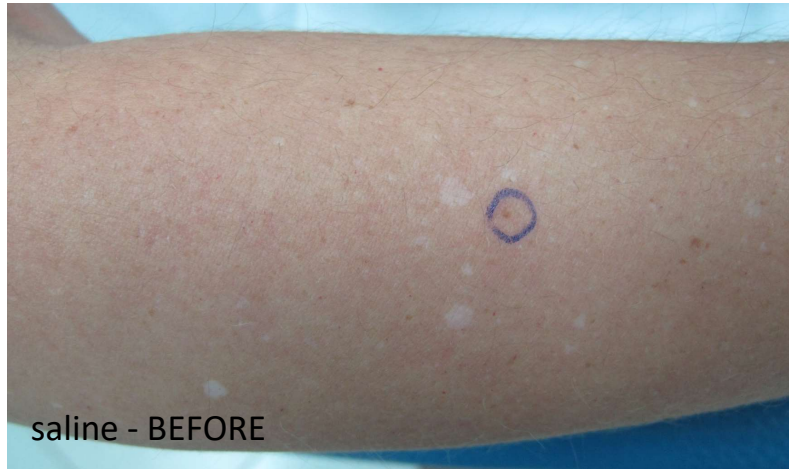


saline - AFTER 30D

Participant 12



Participant 13  ↙⊙ Arrows and circles for topographical orientations

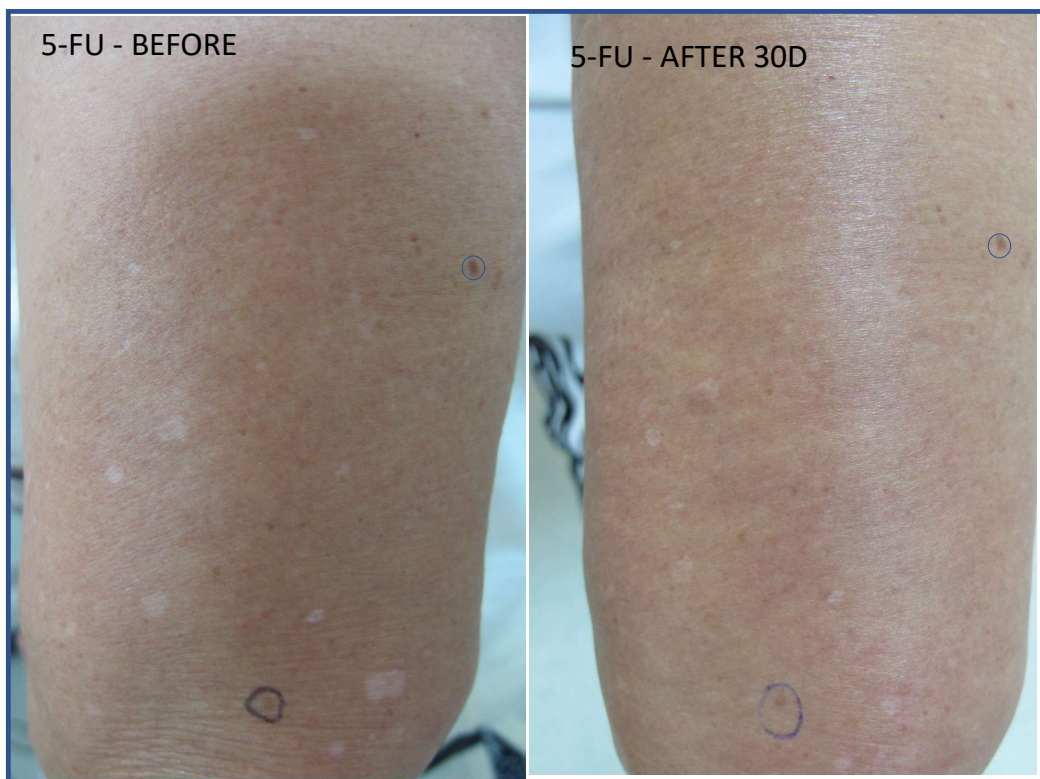


Participant 14



○ Red circles - hyperpigmentation

○ Blue circles - topographical orientations



Participant 15



↘ Arrows for topographical orientations

Participant 16

Fitzpatrick



Participant 17



○ Circles for topographical orientations



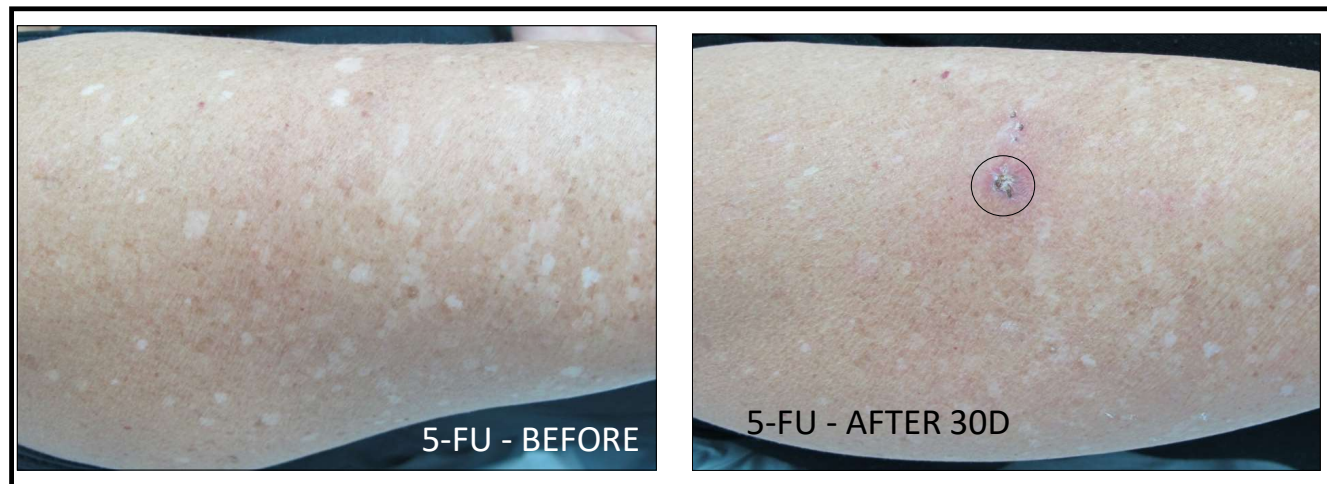
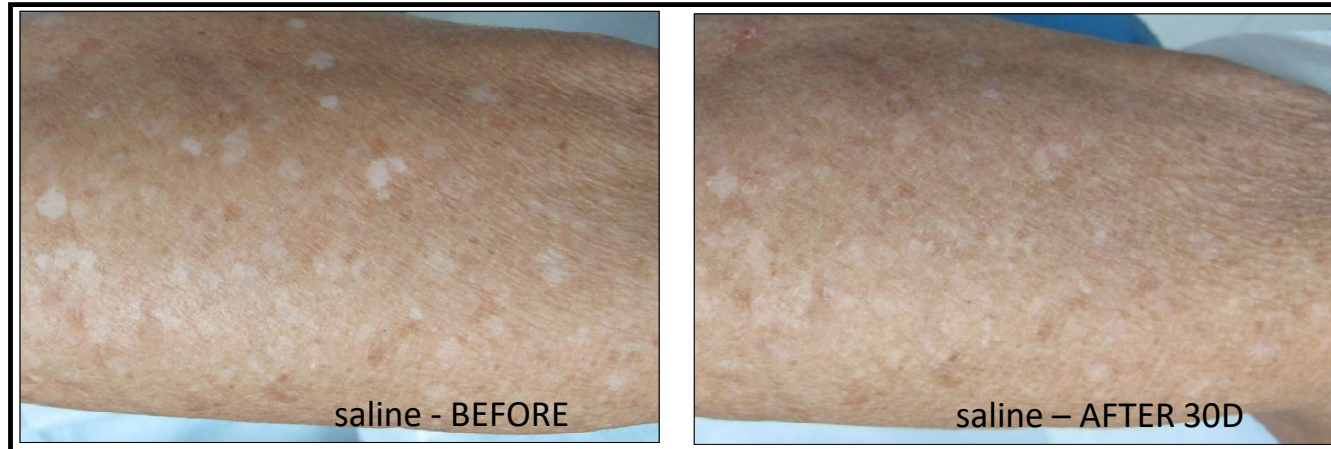
Participant 18



○ Circles for topographical orientations

Participant 19 Fitzpatrick
III

○ Circle - recent biopsy wound



Participant 20



Participant 21



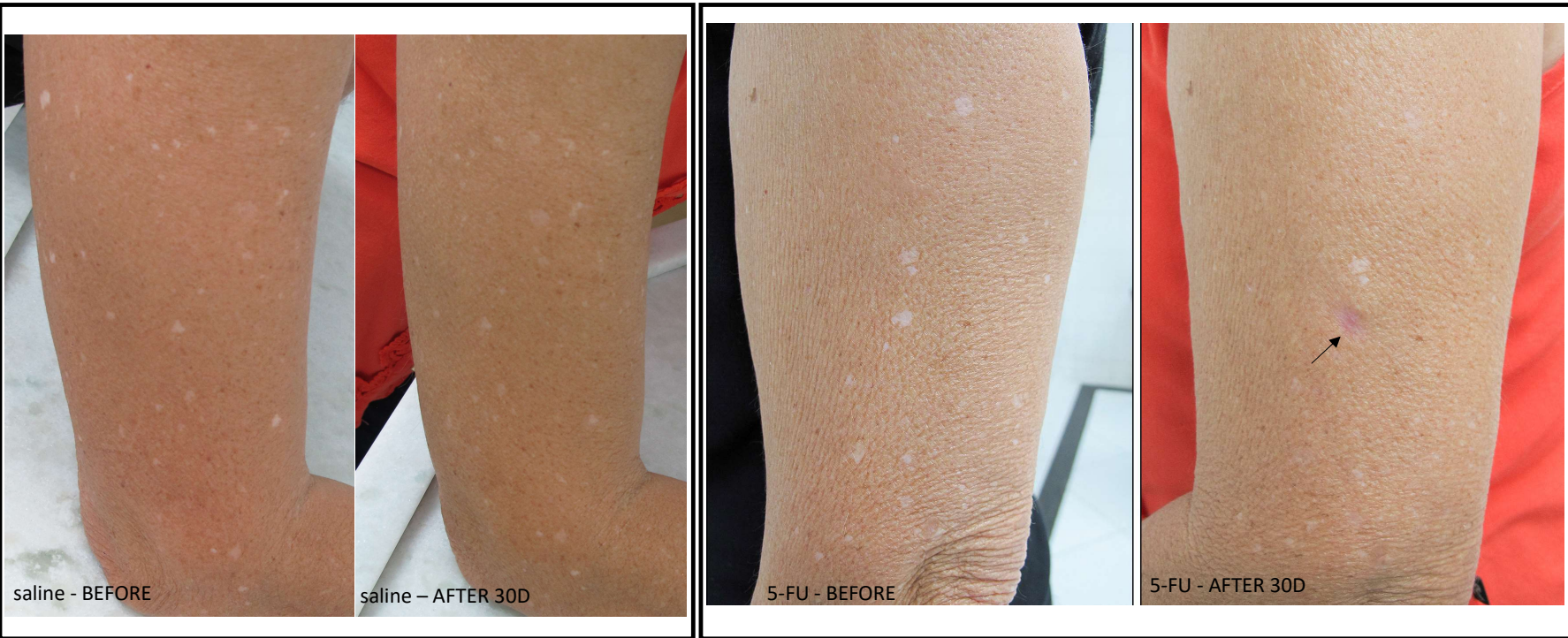
saline - BEFORE

saline - AFTER 30D

5-FU - BEFORE

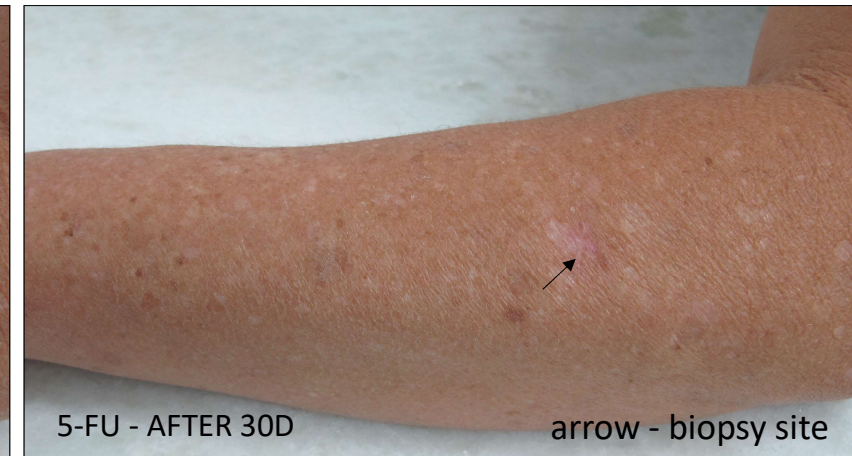
5-FU - AFTER 30D

Participant 22



Arrow - biopsy site

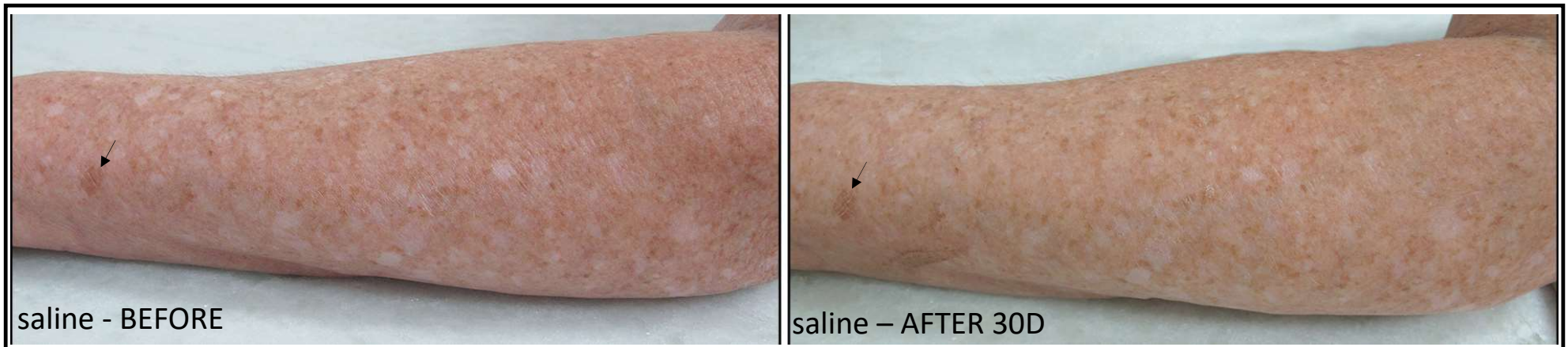
Participant 23



Participant 24



○ Circles for topographical orientations

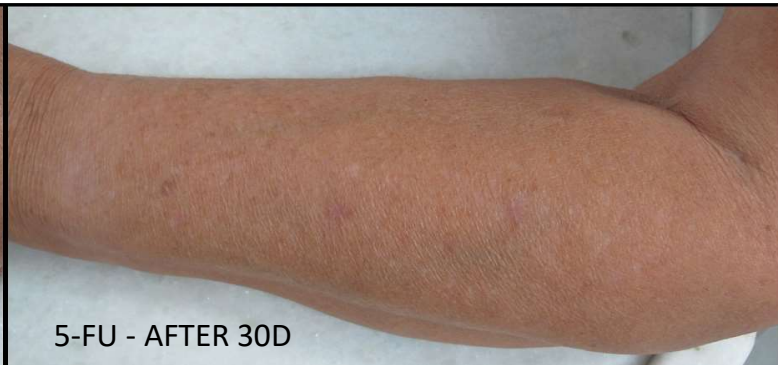
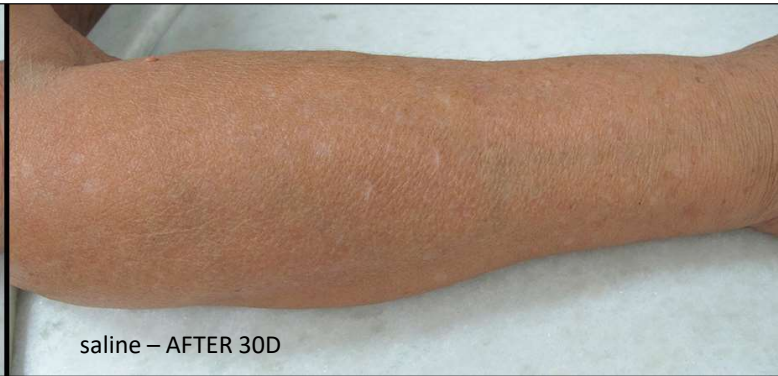


↗ Arrows for topographical orientations

Participant 24



Participant 25



Participant 26 ○ Circles for topographical orientations



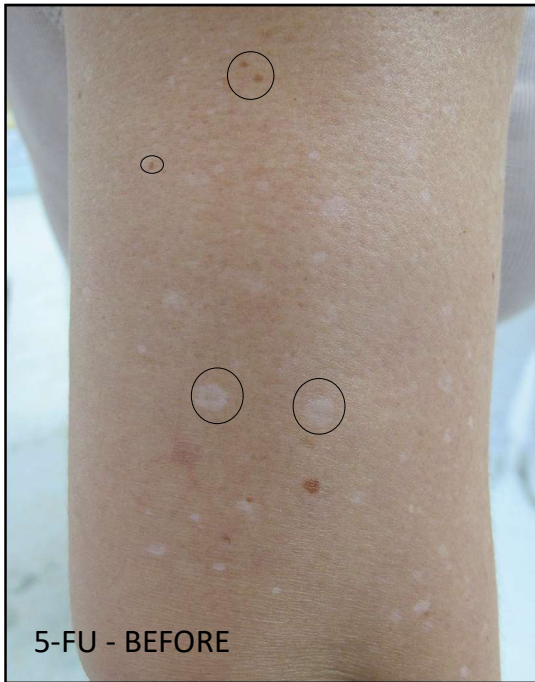
↗ Arrows - 2 BASAL CELL CARCINOMA – REMOVED

Participant 27

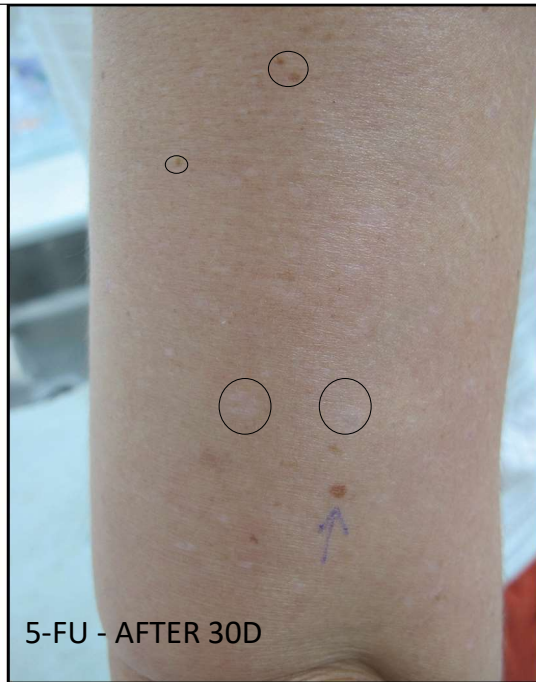


↗ Arrow - biopsy site

○ markings for topographical orientations



5-FU - BEFORE



5-FU - AFTER 30D



saline - BEFORE

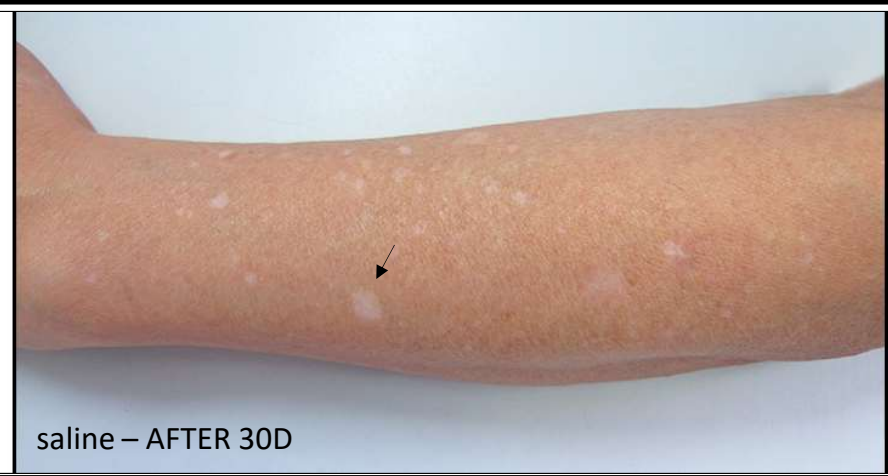


saline - AFTER 30D

Participant 28



↙ Arrows for topographical orientations



Participant 29



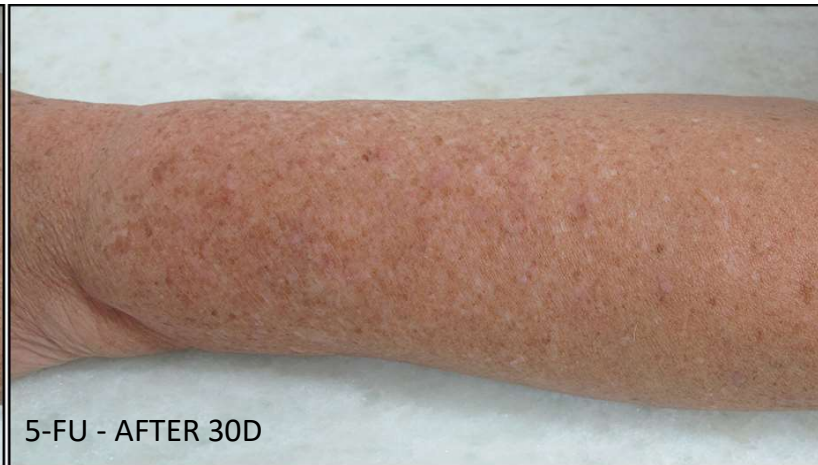
saline - BEFORE



saline - AFTER 30D



5-FU - BEFORE



5-FU - AFTER 30D